

Alberta Live Animal Markets: Visit individual market websites for more information about applicable auction fees and upcoming sales.

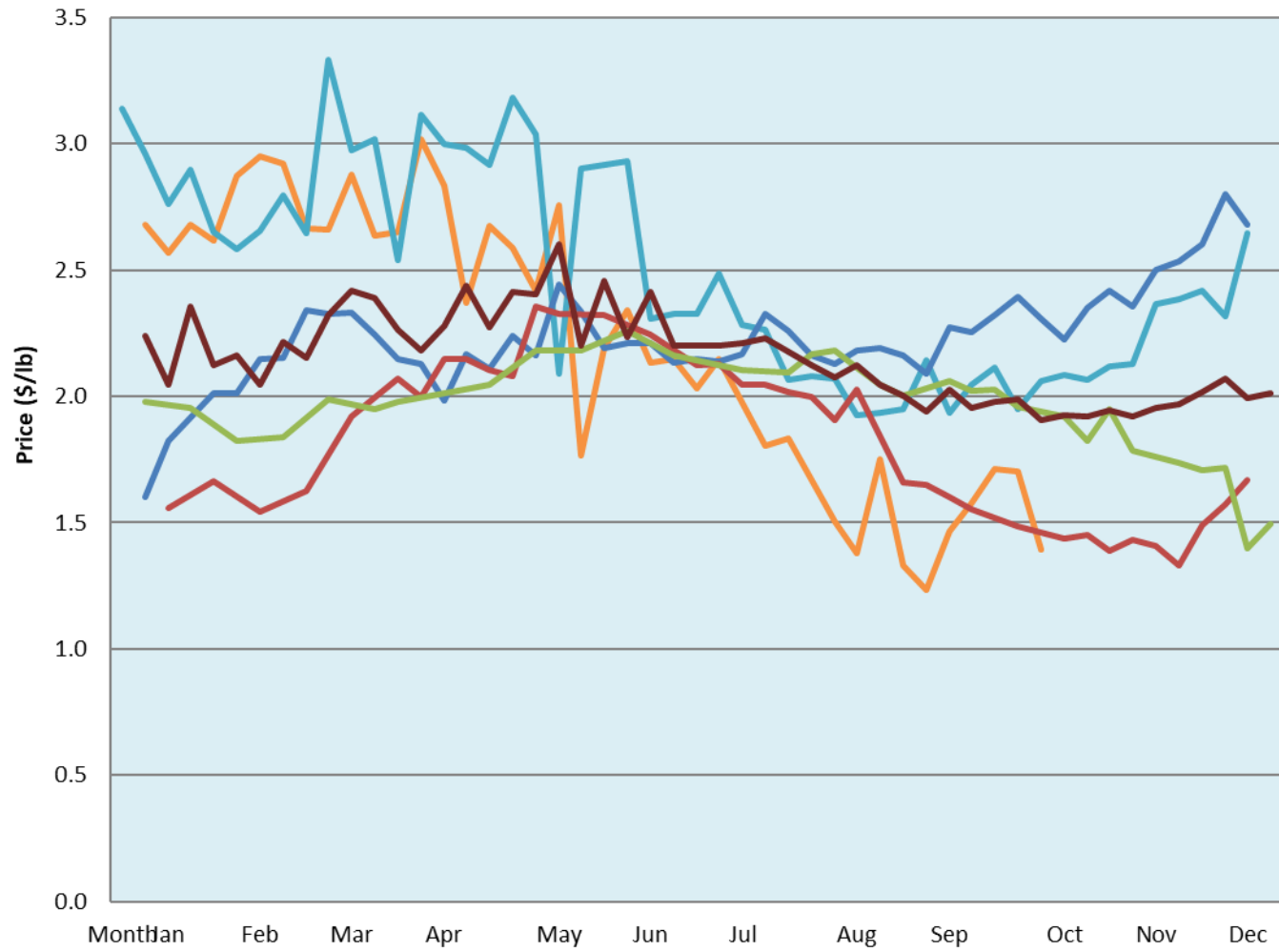
Date	Sale	Lambs (\$/lb)			Lambs (\$/lb)			Lambs (\$/lb)			Sheep(\$/lb): Bred ewes \$/hd		Total Head		
		Weight (lbs)	Head	low - high	Weight (lbs)	Head	low - high	Weight (lbs)	Head	low - high	low - high				
No sale this week	Beaver Hill www.beaverhillauctions.com	0-54: wool	-	0.00 - 0.00	70-85: wool	-	0.00 - 0.00	86-105:wool	-	0.00 - 0.00	Ewes: wool	0.00 - 0.00	0		
		0-54: hair	-	0.00 - 0.00				86-105:hair			-	0.00 - 0.00		Ewes: hair	0.00 - 0.00
		55-69: wool	-	0.00 - 0.00	70-85: hair	-	0.00 - 0.00	106+:wool	-	0.00 - 0.00	Rams: wool	0.00 - 0.00			
		55-69: hair	-	0.00 - 0.00				106+:hair			-	0.00 - 0.00		Rams: hair	0.00 - 0.00
			-								-			Bred Ewes	0.00 - 0.00
								-	0.00 - 0.00	Ewe&Lamb(s)	0.00 - 0.00				
11-Oct-22	VJV Westlock www.vjvauction.com	0-69: wool	-	1.78 - 2.18	70-85: wool	-	1.72 - 2.12	86-105: wool	-	1.65 - 2.05	Ewes: wool	0.75 - 0.99	483		
			-			-		86-105: hair	-	1.29 - 1.65	Ewes: hair	0.70 - 0.97			
			-			-			-		Rams: wool	0.90 - 1.30			
		0-69: hair	-	1.65 - 1.95	70-85: hair	-	1.6 - 1.94	106+: wool	-	0.9 - 1.38	Rams: hair	- - -			
			-			-		106+: hair	-	- - -	Bred Ewes:wool	- - -			
								-	- - -	Ewe&Lamb:hair	- - -				
11-Oct-22	Olds Auction www.oldsauktion.com	30-50	-	1.9 - 1.93	70-80	-	2.1 - 2.25	90-100	-	1.8 - 1.91	Ewes	0.70 - 1.00	213 (incl.goats)		
		50-60	-	1.61 - 2.41	80-90	-	1.84 - 2.16	100-110	-	1.7 - 1.87	Rams	0.90 - 1.10			
		60-70	-	2.04 - 2.54				110+	-	1.37 - 1.52	Bred Ewes	- - -			
08-Oct-22	Picture Butte www.picturebutteauction.ca							Feeder	-	1.65 - 2.00	Slaughter Ewes	0.75 - 1.04	-		
								Slaughter	-	1.25 - 1.43	Feeder Ewes	- - -			
											Ewe&lamb(s)	- - -			
											Bred ewes	2.00 - 2.60			
										Rams	1.30 - 1.45				

Ontario Live Animal Markets

10-Oct-22	OSI www.ontariosheep.org	0-50	25	1.80 - 2.90	65-80	51	2.55 - 2.70	95-110	176	2.175 - 2.33	Sheep	0.97 - 1.60	1028
		50-64	26	2.4 - 2.80	80-95	59	2.33 - 2.46	110+	18	1.9 - 1.95			
11-Oct-22	OLEX www.ontariosheep.org	0-50	42	2.70 - 3.55	65-79	106	3.00 - 3.33	95-109	611	2.28 - 2.60	Sheep	1.00 - 1.70	1485
		50-64	79	2.75 - 3.50	80-94	423	2.60 - 2.93	110+	102	1.99 - 2.20			
10-Oct-22	Embrun www.ontariosheep.org	0-50	13	1.00 - 2.85	65-79	61	2.55 - 3.00	95-109	29	2.44 - 2.85	Sheep	0.82 - 1.47	207
		50-64	34	2.50 - 2.95	80-94	45	2.6 - 3.15	110+	4	2.37 - 2.65			
06-Oct-22	Brussels www.ontariosheep.org	0-50	9	2 - 2.25	65-79	48	2.525 - 3.05	95-109	171	2.1 - 2.38	Sheep	0.58 - 1.65	520
		50-64	44	1.75 - 2.85	80-94	158	2.33 - 2.80	110+	36	1.91 - 2.24			

Alberta Lamb Producers does not endorse individual markets or verify prices provided.

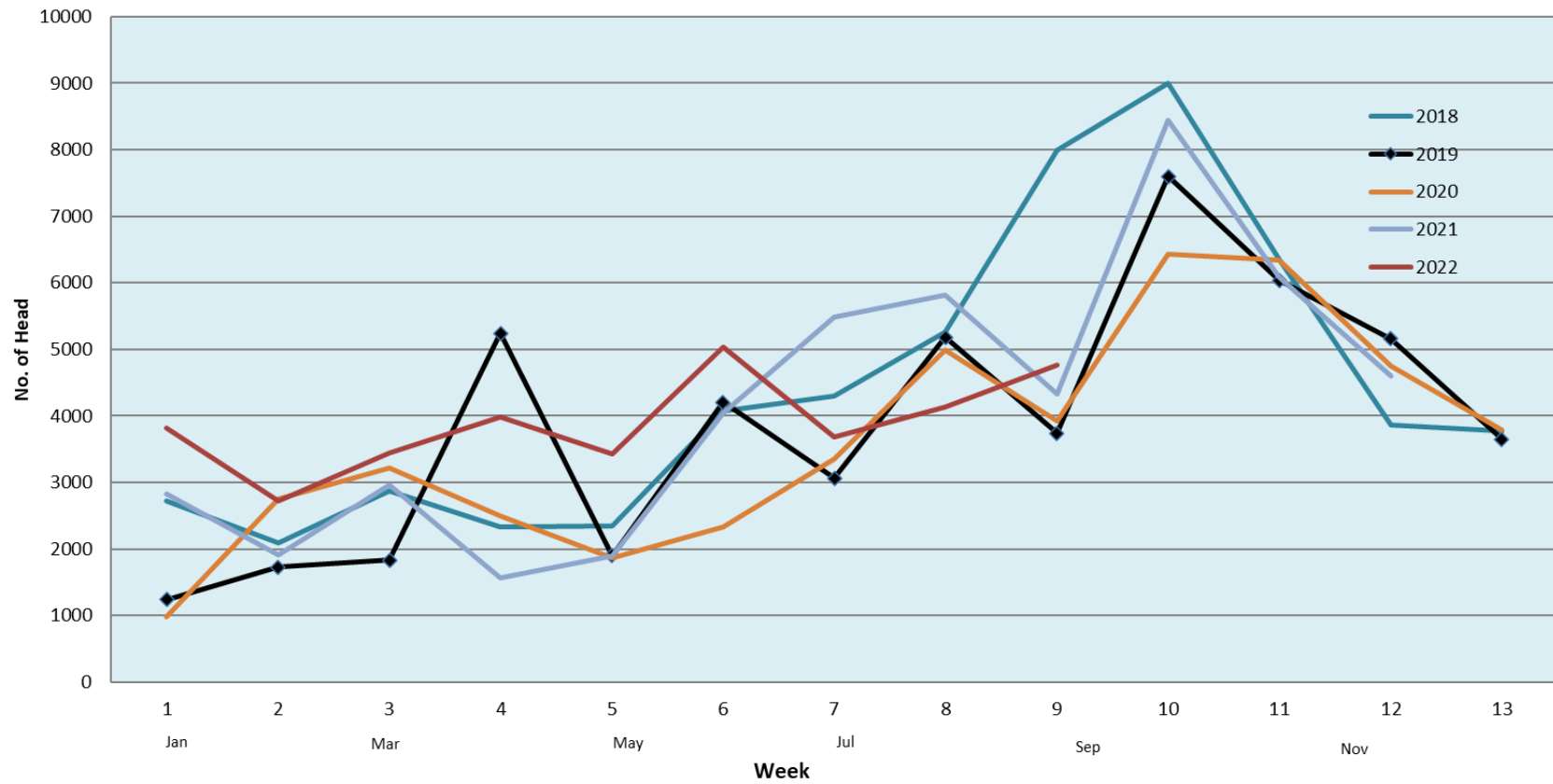
Trends* in auction price for heavy lambs in Alberta



— 2022 — 2021 — 2020 — 2019 — 2018 — 5 yr ave

*Due to differences among auctions, prices are reported as 'trends' rather than averages.
This graph is updated on weeks with two or more markets reporting prices.

Number of head reported sold through three Alberta live animal auctions



Note: Plotted numbers are the totals reported from 3 auction markets for each 4 week period

Month indicators are approximate and intended for reference only

Total/year: 2014 (51,383); 2015 (58,134); 2016 (49,846); 2017 (53,659); 2018 (56,980); 2019 (50,583); 2020 (47,221)