

**Alberta Live Animal Markets: Visit individual market websites for more information about applicable auction fees and upcoming sales.**

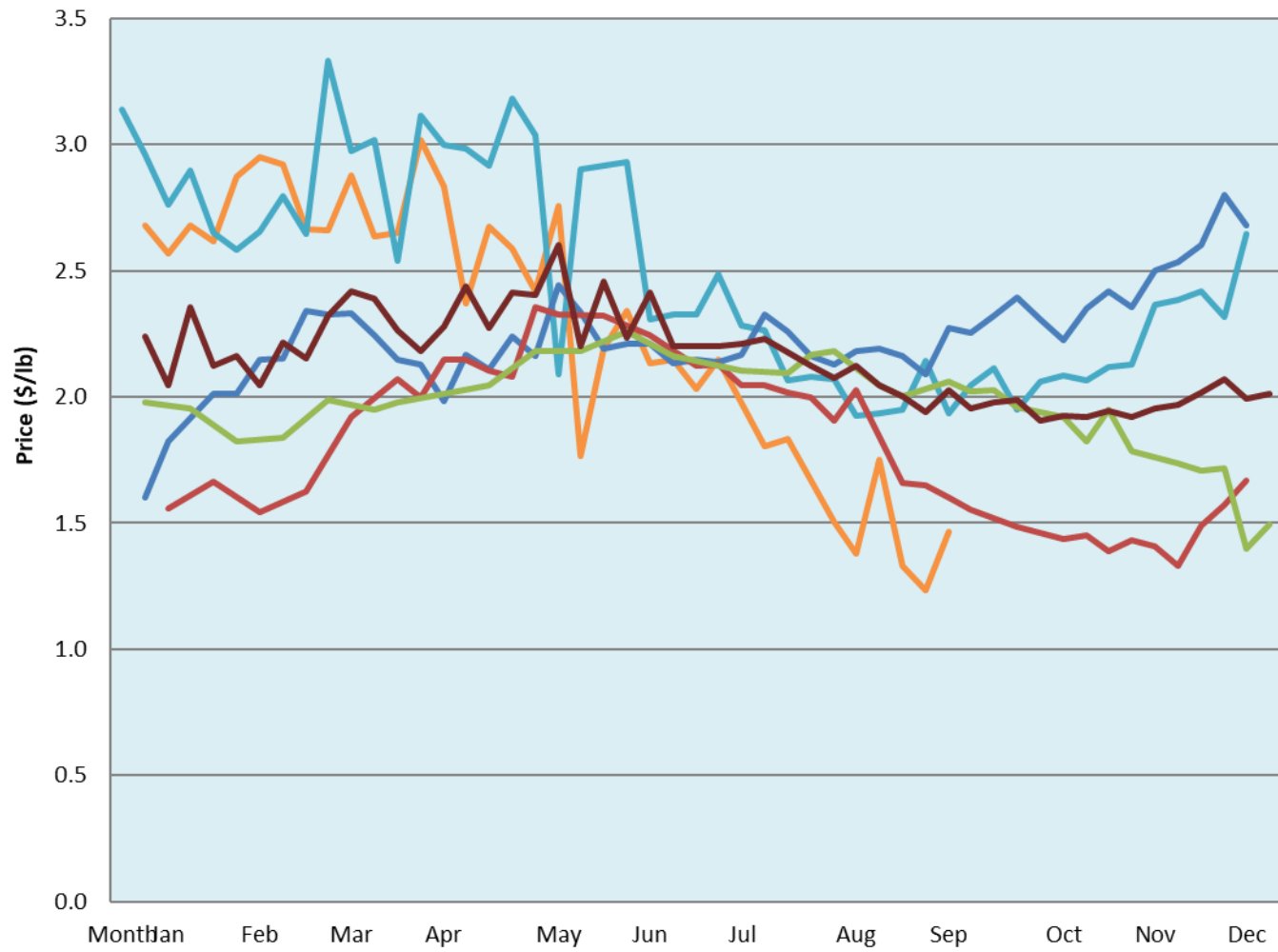
Date	Sale	Lambs (\$/lb)			Lambs (\$/lb)			Lambs (\$/lb)			Sheep(\$/lb): Bred ewes \$/hd		Total Head		
		Weight (lbs)	Head	low - high	Weight (lbs)	Head	low - high	Weight (lbs)	Head	low - high	low - high				
12-Sep-22	Beaver Hill <a href="http://www.beaverhillauctions.com">www.beaverhillauctions.com</a>	0-54: wool	-	1.70 - 2.30	70-85: wool	-	1.50 - 2.16	86-105:wool	-	1.42 - 1.86	Ewes: wool	0.90 - 1.65	1386		
		0-54: hair	-	1.60 - 2.25				86-105:hair			-	1.40 - 1.76		Ewes: hair	0.90 - 1.65
		55-69: wool	-	1.90 - 2.49				106+:wool			-	1.35 - 1.75		Rams: wool	1.14 - 1.65
		55-69: hair	-	1.70 - 2.05	70-85: hair	-	1.70 - 2.00	106+:hair	-	0.90 - 1.61	Rams: hair	1.27 - 1.60			
												Bred Ewes		1.90 - 2.75	
No sale this week	VJV Westlock <a href="http://www.vjvauction.com">www.vjvauction.com</a>	0-69: wool	-	- - -	70-85: wool	-	- - -	86-105: wool	-	- - -	Ewes: wool	- - -	-		
								86-105: hair	-	- - -	Ewes: hair	- - -			
									106+: wool	-	- - -	Rams: wool		- - -	
		0-69: hair	-	- - -	70-85: hair	-	- - -	106+: hair	-	- - -	Rams: hair	- - -			
												Bred Ewes:wool		- - -	
13-Sep-22	Olds Auction <a href="http://www.oldsauktion.com">www.oldsauktion.com</a>	30-50	-	1.6 - 1.81	70-80	-	1.87 - 2.00	90-100	-	1.68 - 1.83	Ewes	1.00 - 1.28	216  (incl.goats)		
		50-60	-	1.8 - 2.14	80-90	-	1.85 - 1.94	100-110	-	1.57 - 1.66	Rams	1.06 - 1.25			
		60-70	-	1.95 - 2.00				110+	-	1.31 - 1.45	Bred Ewes	- - -			
10-Sep-22	Picture Butte <a href="http://www.picturebutteauction.ca">www.picturebutteauction.ca</a>							Feeder	-	1.83 - 1.94	Slaughter Ewes	0.88 - 1.12	-		
								Slaughter	-	1.61 - 1.85	Feeder Ewes	- - -			
											Ewe&lamb(s)	- - -			
											Bred ewes	- - -			
										Rams	2.07 - 2.07				

**Ontario Live Animal Markets**

12-Sep-22	OSI <a href="http://www.ontariosheep.org">www.ontariosheep.org</a>	0-50	47	1.45 - 3.03	65-80	174	2.36 - 2.56	95-110	196	1.94 - 2.10	Sheep	1.38 - 1.85	1579
		50-64	125	2.4 - 2.69	80-95	137	2.07 - 2.40	110+	22	1.97 - 1.99			
13-Sep-22	OLEX <a href="http://www.ontariosheep.org">www.ontariosheep.org</a>	0-50	79	2.80 - 3.75	65-79	339	2.40 - 2.78	95-109	871	1.97 - 2.20	Sheep	1.35 - 1.93	2720
		50-64	149	2.55 - 3.25	80-94	590	2.05 - 2.43	110+	194	1.85 - 2.02			
12-Sep-22	Embrun <a href="http://www.ontariosheep.org">www.ontariosheep.org</a>	0-50	22	2.05 - 2.50	65-79	166	2.27 - 2.60	95-109	35	1.8 - 2.17	Sheep	0.90 - 1.30	468
		50-64	99	2.22 - 2.50	80-94	106	2.1 - 2.60	110+	0	0 - 0.00			
08-Sep-22	Brussels <a href="http://www.ontariosheep.org">www.ontariosheep.org</a>	0-50	3	2.65 - 2.65	65-79	39	2.65 - 2.94	95-109	69	1.9 - 2.16	Sheep	1.35 - 2.25	294
		50-64	39	2.575 - 2.85	80-94	73	2.16 - 2.47	110+	22	1.675 - 1.78			

**Alberta Lamb Producers does not endorse individual markets or verify prices provided.**

### Trends\* in auction price for heavy lambs in Alberta



— 2022 — 2021 — 2020 — 2019 — 2018 — 5 yr ave

\*Due to differences among auctions, prices are reported as 'trends' rather than averages.  
This graph is updated on weeks with two or more markets reporting prices.