

Alberta Live Animal Markets: Visit individual market websites for more information about applicable auction fees and upcoming sales.

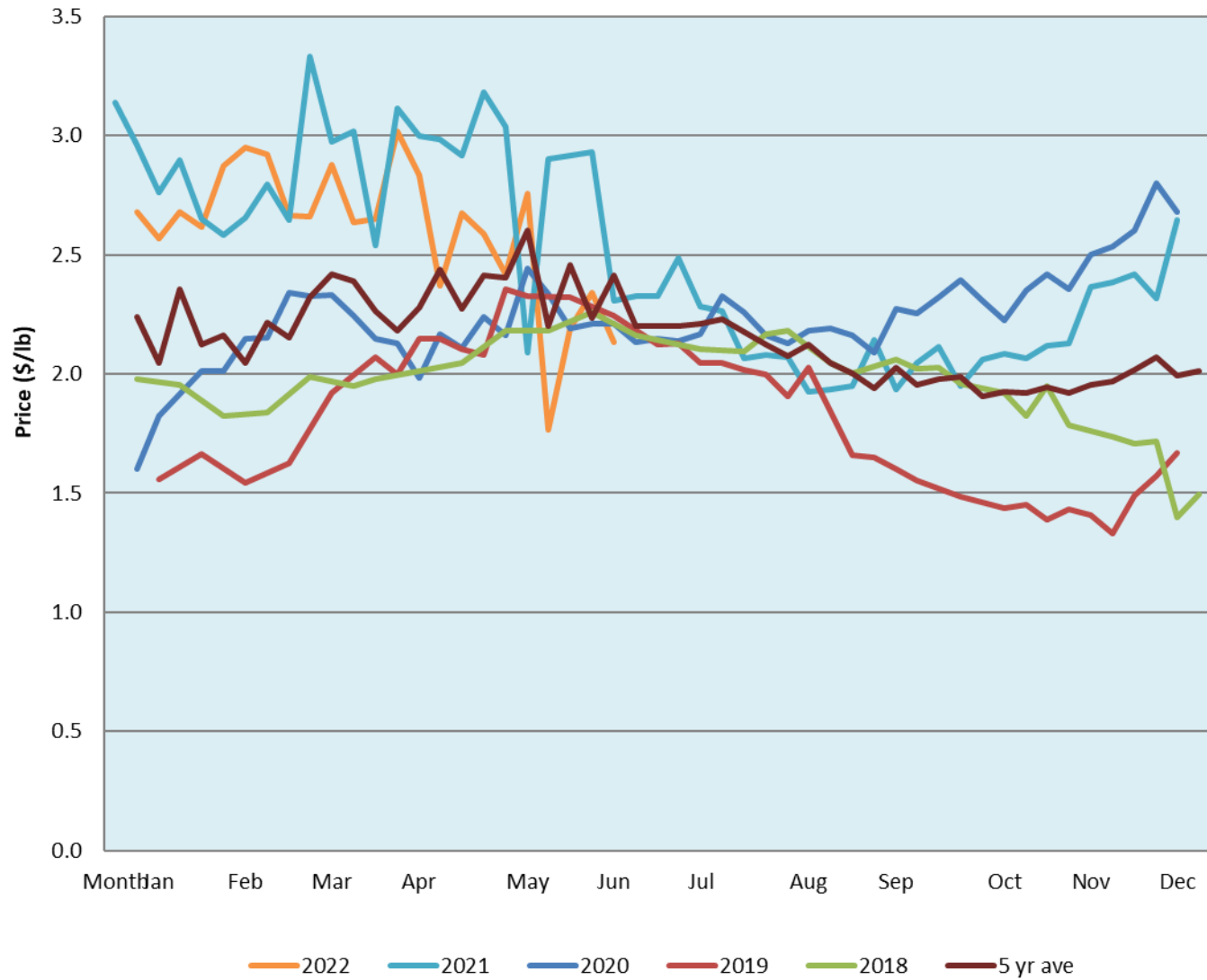
Date	Sale	Lambs (\$/lb)			Lambs (\$/lb)			Lambs (\$/lb)			Sheep(\$/lb): Bred ewes \$/hd		Total Head		
		Weight (lbs)	Head	low - high	Weight (lbs)	Head	low - high	Weight (lbs)	Head	low - high	low - high				
13-Jun-22	Beaver Hill www.beaverhillauctions.com	0-54: wool	-	1.90 - 2.40	70-85: wool	-	2.15 - 2.76	86-105:wool	-	2.15 - 2.65	Ewes: wool	0.90 - 1.63	1144		
		0-54: hair	-	1.75 - 2.50				86-105:hair			-	2.15 - 2.40		Ewes: hair	0.95 - 1.60
		55-69: wool	-	2.15 - 2.70	70-85: hair	-	2.15 - 2.50	106+:wool	-	2.10 - 2.40	Rams: wool	1.13 - 2.15			
		55-69: hair	-	1.70 - 2.35				106+:hair			-	0.95 - 2.20		Rams: hair	1.13 - 2.10
			-								-			Bred Ewes	0.00 - 0.00
								-		Ewe&Lamb(s)	0.00 - 0.00				
No sale this week	VJV Westlock www.vjvauction.com	0-69: wool	-	- - -	70-85: wool	-	- - -	86-105: wool	-	- - -	Ewes: wool	- - -	-		
			-					86-105: hair	-	- - -	Ewes: hair	- - -			
			-							-	- - -	Rams: wool		- - -	
		0-69: hair	-	- - -	70-85: hair	-	- - -	106+: wool	-	- - -	Rams: hair	- - -			
			-					106+: hair	-	- - -	Bred Ewes:wool	- - -			
14-Jun-22	Olds Auction www.oldsauktion.com	30-50	-	2.4 - 2.90	70-80	-	2.47 - 2.64	90-100	-	2.04 - 2.22	Ewes	0.80 - 1.27	191 (incl.goats)		
		50-60	-	2.41 - 2.79	80-90	-	1.74 - 2.31	100-110	-	2.06 - 2.23	Rams	0.90 - 1.17			
		60-70	-	2.25 - 2.79				110+	-	2 - 2.25	Bred Ewes	- - -			
11-Jun-22	Picture Butte www.picturebutteauction.ca							Feeder	-	2 - 2.78	Slaughter Ewes	0.90 - 1.19	-		
								Slaughter	-	1.91 - 2.13	Feeder Ewes	- - -			
											Ewe&lamb(s)	3.00 - 3.00			
											Bred ewes	- - -			
										Rams	1.21 1.45				

Ontario Live Animal Markets

13-Jun-22	OSI www.ontariosheep.org	0-50	77	2.78 - 3.10	65-80	53	2.90 - 3.13	95-110	37	2.57 - 2.81	Sheep	0.93 - 1.65	1371
		50-64	399	2.8 - 3.14	80-95	115	2.73 - 2.96	110+	50	2.275 - 2.56			
14-Jun-22	OLEX www.ontariosheep.org	0-50	152	3.48 - 4.25	65-79	471	2.98 - 3.35	95-109	1024	2.68 - 2.98	Sheep	0.75 - 1.73	3245
		50-64	334	2.98 - 3.48	80-94	608	2.73 - 3.10	110+	168	2.50 - 2.90			
13-Jun-22	Embrun www.ontariosheep.org	0-50	5	2.65 - 2.85	65-79	105	3.3 - 3.66	95-109	65	3.35 - 3.60	Sheep	0.70 - 1.45	437
		50-64	54	2.90 - 3.35	80-94	70	3.2 - 3.65	110+	34	3.1 - 3.65			
9-Jun-22	Brussels www.ontariosheep.org	0-50	20	2.5 - 3.30	65-79	110	2.725 - 3.15	95-109	166	2.5 - 2.70	Sheep	0.75 - 1.56	881
		50-64	74	2.98 - 3.98	80-94	68	2.65 - 2.91	110+	11	2.49 - 2.80			

Alberta Lamb Producers does not endorse individual markets or verify prices provided.

Trends* in auction price for heavy lambs in Alberta



*Due to differences among auctions, prices are reported as 'trends' rather than averages.
 This graph is updated on weeks with two or more markets reporting prices.