

Alberta Live Animal Markets: Visit individual market websites for more information about applicable auction fees and upcoming sales.

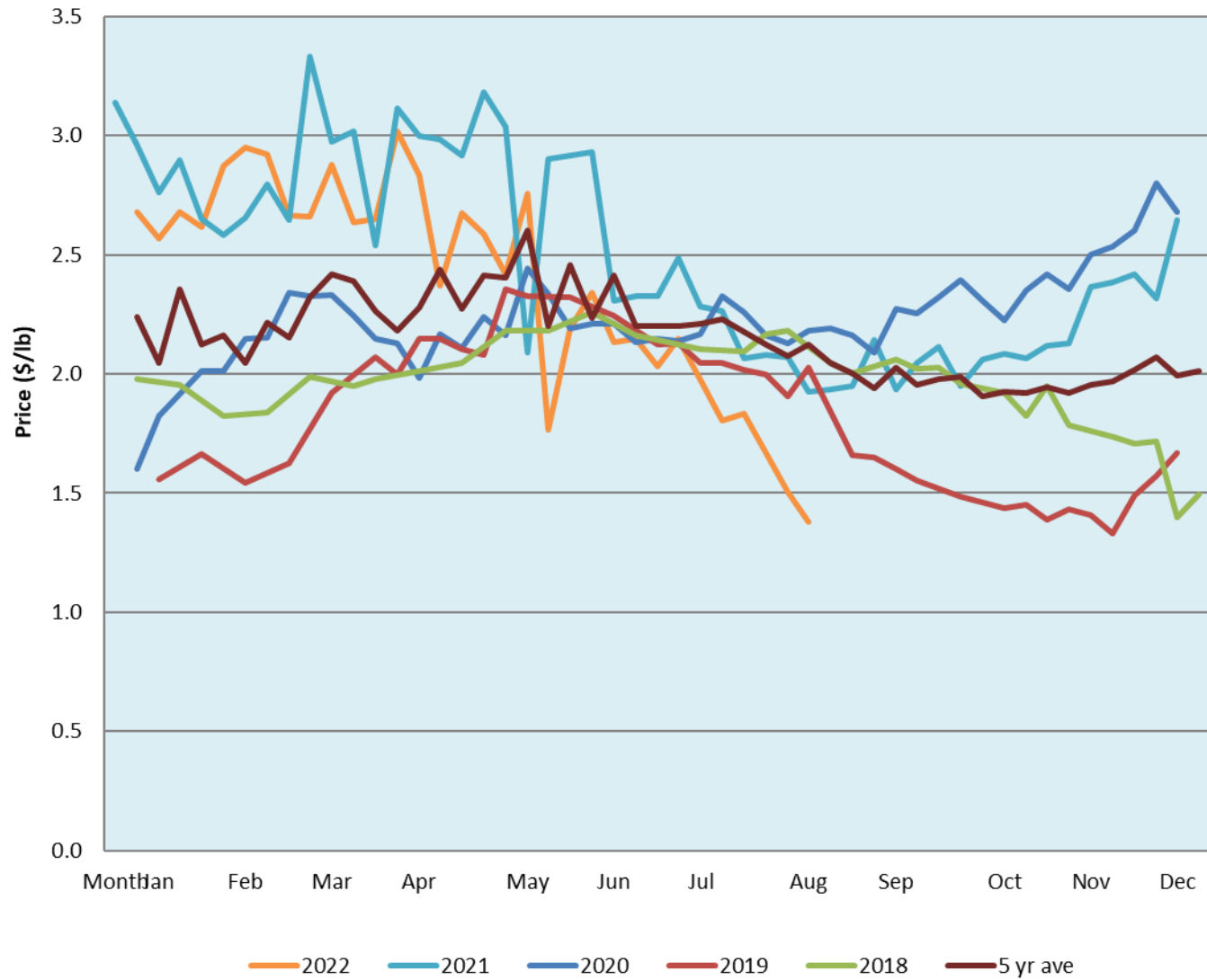
Date	Sale	Lambs (\$/lb)			Lambs (\$/lb)			Lambs (\$/lb)			Sheep(\$/lb): Bred ewes \$/hd		Total Head		
		Weight (lbs)	Head	low - high	Weight (lbs)	Head	low - high	Weight (lbs)	Head	low - high	low - high				
15-Aug-22	Beaver Hill www.beaverhillauctions.com	0-54: wool	-	1.80 - 2.20	70-85: wool	-	1.59 - 1.80	86-105:wool	-	1.41 - 1.97	Ewes: wool	0.75 - 1.38	790		
		0-54: hair	-	1.20 - 1.50				86-105:hair			-	1.20 - 1.55		Rams: wool	0.77 - 1.20
		55-69: wool	-	1.60 - 2.28				106+:wool			-	1.21 - 1.55		Rams: hair	1.00 - 1.15
		55-69: hair	-	1.40 - 1.90	70-85: hair	-	1.35 - 1.65	106+:hair	-	0.77 - 1.50	Bred Ewes	0.00 - 0.00			
											Ewe&Lamb(s)	0.00 - 0.00			
No sale this week	VJV Westlock www.vjvauction.com	0-69: wool	-	- - -	70-85: wool	-	- - -	86-105: wool	-	- - -	Ewes: wool	- - -	-		
			-					86-105: hair	-	- - -	Ewes: hair	- - -			
			-						106+: wool	-	- - -	Rams: wool		- - -	
		0-69: hair	-	- - -	70-85: hair	-	- - -	106+: hair	-	- - -	Rams: hair	- - -			
			-								Bred Ewes:wool	- - -			
			-								Ewe&Lamb:hair	- - -			
Information unavailable	Olds Auction www.oldsauktion.com	30-50	-	- - -	70-80	-	- - -	90-100	-	- - -	Ewes	- - -	-		
		50-60	-	- - -	80-90	-	- - -	100-110	-	- - -	Rams	- - -			
		60-70	-	- - -				110+	-	- - -	Bred Ewes	- - -			
Information unavailable	Picture Butte www.picturebutteauction.ca							Feeder	-	- - -	Slaughter Ewes	- - -	-		
								Slaughter	-	- - -	Feeder Ewes	- - -			
											Ewe&lamb(s)	- - -			
											Bred ewes	- - -			
											Rams	- - -			

Ontario Live Animal Markets

15-Aug-22	OSI www.ontariosheep.org	0-50	16	1.50 - 2.10	65-80	111	2.08 - 2.40	95-110	111	2.075 - 2.18	Sheep	1.00 - 2.00	717
		50-64	34	2.05 - 2.20	80-95	87	2.00 - 2.29	110+	3	2.025 - 2.28			
16-Aug-22	OLEX www.ontariosheep.org	0-50	78	2.63 - 3.25	65-79	661	2.38 - 2.75	95-109	985	1.95 - 2.20	Sheep	1.35 - 2.03	2834
		50-64	196	2.50 - 2.93	80-94	334	2.30 - 2.50	110+	326	1.95 - 2.08			
15-Aug-22	Embrun www.ontariosheep.org	0-50	9	2.05 - 2.40	65-79	97	2.1 - 2.60	95-109	23	2.2 - 2.70	Sheep	0.70 - 1.22	301
		50-64	20	2.35 - 2.50	80-94	89	2.32 - 2.65	110+	5	2.2 - 2.70			
11-Aug-22	Brussels www.ontariosheep.org	0-50	12	2.425 - 2.75	65-79	53	2.6 - 2.90	95-109	68	2.09 - 2.16	Sheep	1.10 - 1.90	291
		50-64	9	2.5 - 2.67	80-94	56	1.9 - 2.28	110+	16	1.95 - 2.13			

Alberta Lamb Producers does not endorse individual markets or verify prices provided.

Trends* in auction price for heavy lambs in Alberta



*Due to differences among auctions, prices are reported as 'trends' rather than averages.
This graph is updated on weeks with two or more markets reporting prices.