

Alberta Live Animal Markets: Visit individual market websites for more information about applicable auction fees and upcoming sales.

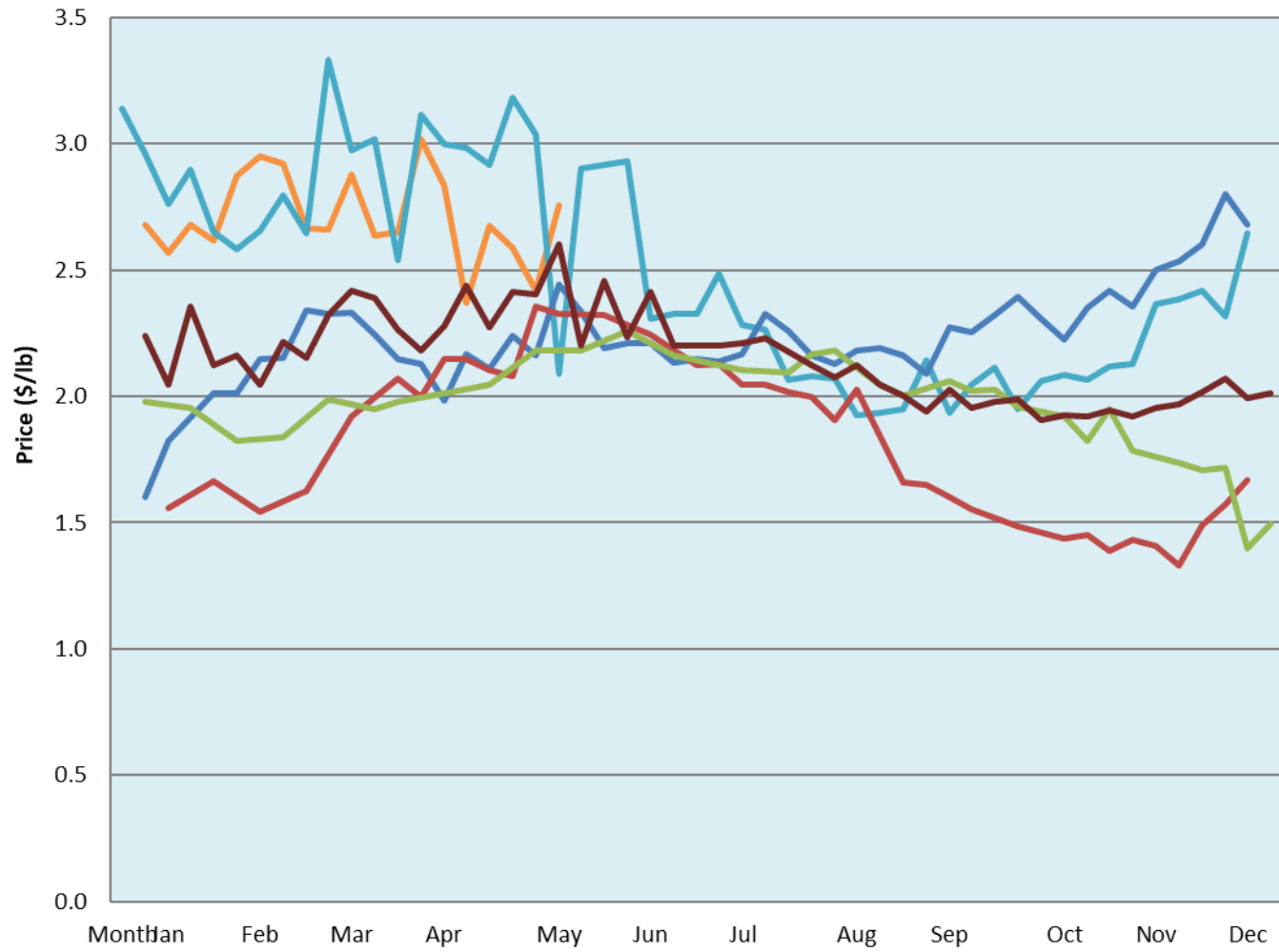
Date	Sale	Lambs (\$/lb)			Lambs (\$/lb)			Lambs (\$/lb)			Sheep(\$/lb): Bred ewes \$/hd		Total Head		
		Weight (lbs)	Head	low - high	Weight (lbs)	Head	low - high	Weight (lbs)	Head	low - high	low - high				
16-May-22	Beaver Hill www.beaverhillauctions.com	0-54: wool	-	2.30 - 2.80	70-85: wool	-	2.40 - 3.00	86-105:wool	-	2.30 - 3.00	Ewes: wool	0.90 - 1.85	1580		
		0-54: hair	-	1.80 - 2.30				86-105:hair			-	2.30 - 2.60		Rams: wool	1.00 - 1.60
		55-69: wool	-	2.50 - 3.00	70-85: hair	-	2.30 - 2.60	106+:wool	-	2.30 - 3.00	Rams: hair	1.20 - 1.80			
		55-69: hair	-	2.00 - 2.60				106+:hair			-	1.00 - 2.60		Bred Ewes	2.00 - 3.50
			-								-			Ewe&Lamb(s)	2.00 - 3.50
Information unavailable	VJV Westlock www.vjvauction.com	0-69: wool	-	- - -	70-85: wool	-	- - -	86-105: wool	-	- - -	Ewes: wool	- - -	-		
			-					86-105: hair			-	- - -		Rams: wool	- - -
		0-69: hair	-	- - -	70-85: hair	-	- - -	106+: wool	-	- - -	Rams: hair	- - -			
			-					106+: hair			-	- - -		Bred Ewes:wool	- - -
			-								-			Ewe&Lamb:hair	- - -
17-May-22	Olds Auction www.oldsauktion.com	30-50	-	2.24 - 3.07	70-80	-	2.53 - 3.18	90-100	-	3.04 - 3.13	Ewes	0.85 - 1.24	287 (incl.goats)		
		50-60	-	3.22 - 3.41	80-90	-	3.18 - 3.33	100-110	-	2.83 - 2.96	Rams	1.62 - 1.81			
		60-70	-	3.21 - 3.41				110+	-	2.79 - 2.83	Bred Ewes	- - -			
14-May-22	Picture Butte www.picturebutteauction.ca							Feeder	-	3.15 - 3.30	Slaughter Ewes	1.13 - 1.56	-		
								Slaughter	-	2.73 - 2.88	Feeder Ewes	- - -			
											Ewe&lamb(s)	3.00 - 3.00			
											Bred ewes	- - -			
										Rams	- - -	-			

Ontario Live Animal Markets

16-May-22	OSI www.ontariosheep.org	0-50	57	2.80 - 3.38	65-80	452	2.98 - 3.30	95-110	119	3.15 - 3.40	Sheep	1.40 - 2.44	1247
		50-64	156	2.55 - 3.35	80-95	224	3.11 - 3.28	110+	10	2.72 - 2.72			
17-May-22	OLEX www.ontariosheep.org	0-50	176	3.85 - 4.35	65-79	582	3.38 - 3.70	95-109	651	3.28 - 3.54	Sheep	1.03 - 2.30	2527
		50-64	357	3.40 - 3.83	80-94	355	3.33 - 3.60	110+	149	3.38 - 3.50			
16-May-22	Embrun www.ontariosheep.org	0-50	7	3.00 - 3.55	65-79	66	3.7 - 4.00	95-109	32	3.5 - 3.90	Sheep	0.94 - 1.55	277
		50-64	54	3.57 - 3.95	80-94	73	3.72 - 4.04	110+	3	3.4 - 3.50			
12-May-22	Brussels www.ontariosheep.org	0-50	32	3.475 - 3.60	65-79	181	3.45 - 3.70	95-109	74	3.38 - 3.48	Sheep	1.15 - 2.25	611
		50-64	63	3.49 - 3.75	80-94	109	3.4 - 3.58	110+	9	1.525 - 1.53			

Alberta Lamb Producers does not endorse individual markets or verify prices provided.

Trends* in auction price for heavy lambs in Alberta



— 2022
 — 2021
 — 2020
 — 2019
 — 2018
 — 5 yr ave

*Due to differences among auctions, prices are reported as 'trends' rather than averages.
 This graph is updated on weeks with two or more markets reporting prices.