

Alberta Live Animal Markets: Visit individual market websites for more information about applicable auction fees and upcoming sales.

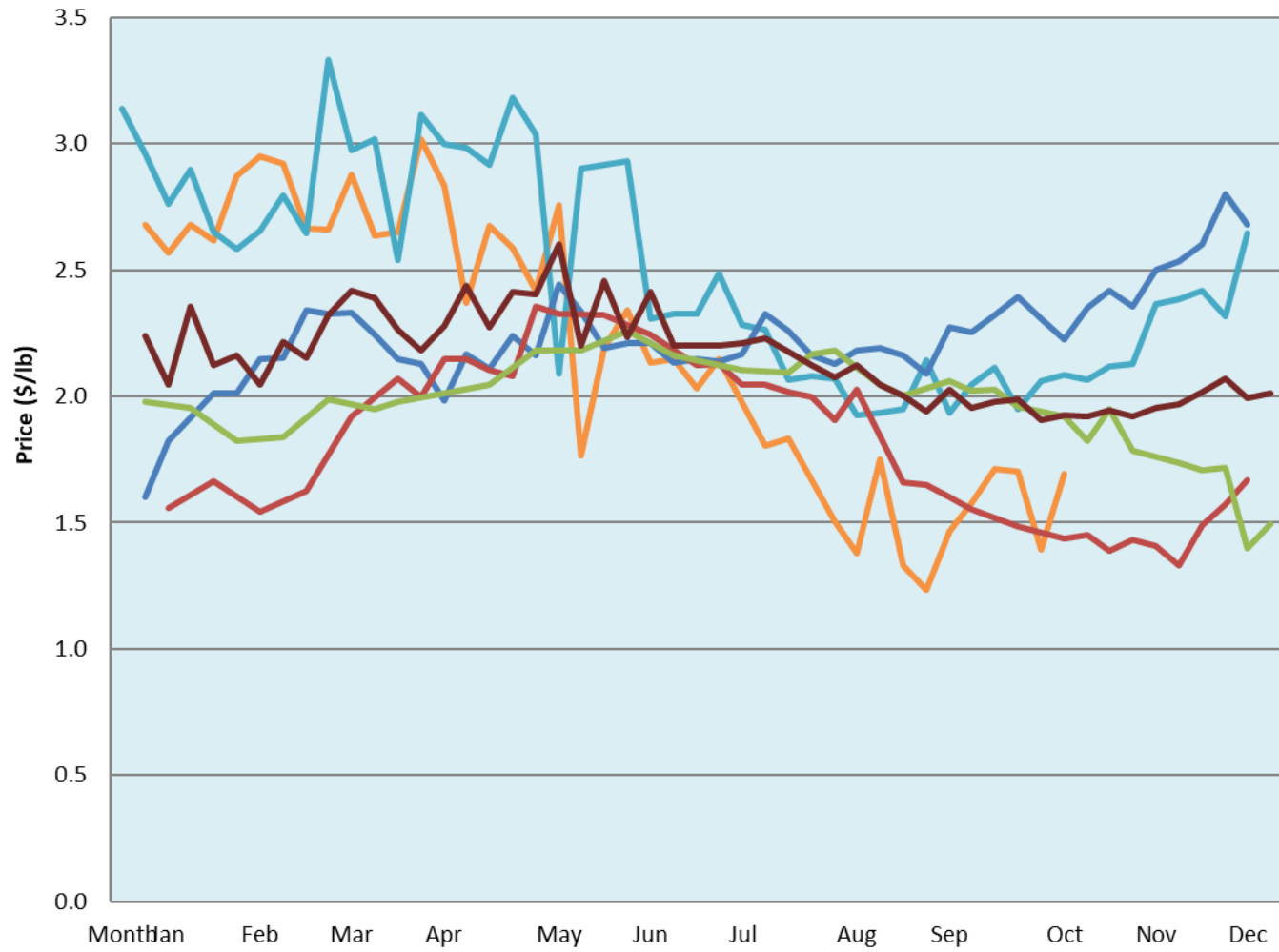
Date	Sale	Lambs (\$/lb)			Lambs (\$/lb)			Lambs (\$/lb)			Sheep(\$/lb): Bred ewes \$/hd		Total Head		
		Weight (lbs)	Head	low - high	Weight (lbs)	Head	low - high	Weight (lbs)	Head	low - high	low - high	low - high			
17-Oct-22	Beaver Hill www.beaverhillauctions.com	0-54: wool	-	2.00 - 2.46	70-85: wool	-	1.80 - 2.40	86-105:wool	-	1.60 - 2.13	Ewes: wool	0.95 - 1.60	1825		
		0-54: hair	-	1.70 - 2.10				86-105:hair			-	1.55 - 1.95		Rams: wool	0.87 - 1.65
		55-69: wool	-	2.10 - 2.60	70-85: hair	-	1.75 - 2.15	106+:wool	-	1.55 - 1.84	Rams: hair	0.90 - 1.55			
		55-69: hair	-	1.90 - 2.30				106+:hair			-	0.90 - 1.75		Bred Ewes	2.50 - 3.25
			-								-			Ewe&Lamb(s)	0.00 - 0.00
No sale this week	VJV Westlock www.vjvauction.com	0-69: wool	-	- - -	70-85: wool	-	- - -	86-105: wool	-	- - -	Ewes: wool	- - -	-		
			-			-		86-105: hair	-	- - -	Ewes: hair	- - -			
			-			-			106+: wool	-	- - -	Rams: wool		- - -	
		0-69: hair	-	- - -	70-85: hair	-	- - -	106+: hair	-	- - -	Rams: hair	- - -			
			-			-				-	- - -	Bred Ewes:wool		- - -	
Information unavailable	Olds Auction www.oldsauktion.com	30-50	-	- - -	70-80	-	- - -	90-100	-	- - -	Ewes	- - -	-		
		50-60	-	- - -	80-90	-	- - -	100-110	-	- - -	Rams	- - -			
		60-70	-	- - -				110+	-	- - -	Bred Ewes	- - -		(incl.goats)	
Information unavailable	Picture Butte www.picturebutteauction.ca						Feeder	-	- - -	Slaughter Ewes	- - -	-			
							Slaughter	-	- - -	Feeder Ewes	- - -				
										Ewe&lamb(s)	- - -				
										Bred ewes	- - -				
										Rams	- - -				

Ontario Live Animal Markets

17-Oct-22	OSI www.ontariosheep.org	0-50	14	2.35 - 3.10	65-80	155	2.60 - 2.85	95-110	238	2.19 - 2.62	Sheep	1.15 - 2.00	1332
		50-64	88	0.6 - 2.80	80-95	293	2.34 - 2.60	110+	88	2 - 2.20			
18-Oct-22	OLEX www.ontariosheep.org	0-50	19	3.25 - 3.70	65-79	350	2.40 - 2.88	95-109	625	2.20 - 2.46	Sheep	0.50 - 1.65	2080
		50-64	152	2.50 - 3.28	80-94	524	2.28 - 2.70	110+	238	2.00 - 2.19			
17-Oct-22	Embrun www.ontariosheep.org	0-50	30	1.00 - 2.50	65-79	91	2.35 - 2.75	95-109	32	2.05 - 2.38	Sheep	0.80 - 1.30	359
		50-64	71	2.60 - 3.00	80-94	104	2.4 - 2.72	110+	10	1.8 - 2.10			
13-Oct-22	Brussels www.ontariosheep.org	0-50	2	2.5 - 2.50	65-79	30	3.05 - 3.77	95-109	154	2.22 - 2.41	Sheep	1.00 - 2.03	419
		50-64	13	3.4 - 3.55	80-94	107	2.475 - 3.38	110+	61	2 - 2.25			

Alberta Lamb Producers does not endorse individual markets or verify prices provided.

Trends* in auction price for heavy lambs in Alberta



— 2022
 — 2021
 — 2020
 — 2019
 — 2018
 — 5 yr ave

*Due to differences among auctions, prices are reported as 'trends' rather than averages.
 This graph is updated on weeks with two or more markets reporting prices.