

Alberta Live Animal Markets: Visit individual market websites for more information about applicable auction fees and upcoming sales.

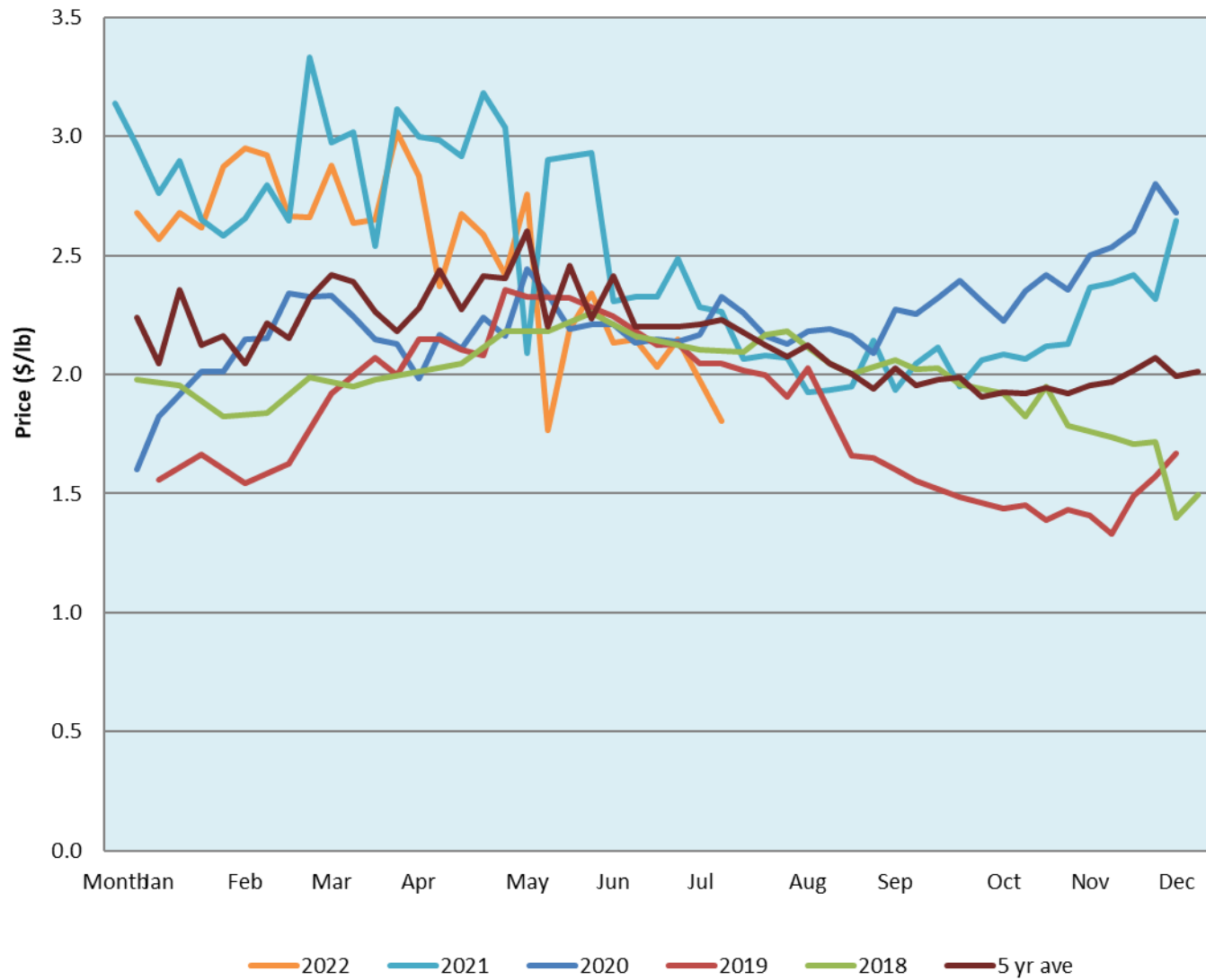
Date	Sale	Lambs (\$/lb)			Lambs (\$/lb)			Lambs (\$/lb)			Sheep(\$/lb): Bred ewes \$/hd		Total Head		
		Weight (lbs)	Head	low - high	Weight (lbs)	Head	low - high	Weight (lbs)	Head	low - high	low - high				
18-Jul-22	Beaver Hill www.beaverhillauctions.com	0-54: wool	-	1.70 - 2.30	70-85: wool	-	1.80 - 2.30	86-105:wool	-	1.80 - 2.26	Ewes: wool	0.90 - 1.60	1346		
		0-54: hair	-	1.45 - 2.05				86-105:hair			-	1.70 - 2.15		Ewes: hair	0.90 - 1.60
		55-69: wool	-	2.10 - 2.35				106+:wool			-	1.70 - 2.20		Rams: wool	1.01 - 1.71
		55-69: hair	-	1.60 - 2.24	70-85: hair	-	1.60 - 2.15	106+:hair	-	0.90 - 2.10	Rams: hair	1.40 - 1.72			
											Bred Ewes	2.00 - 3.00			
											Ewe&Lamb(s)	0.00 - 0.00			
No sale this week	VJV Westlock www.vjvauction.com	0-69: wool	-	- - -	70-85: wool	-	- - -	86-105: wool	-	- - -	Ewes: wool	- - -	-		
								86-105: hair	-	- - -	Ewes: hair	- - -			
									106+: wool	-	- - -	Rams: wool		- - -	
		0-69: hair	-	- - -	70-85: hair	-	- - -	106+: hair	-	- - -	Rams: hair	- - -			
											Bred Ewes:wool	- - -			
											Ewe&Lamb:hair	- - -			
Information unavailable	Olds Auction www.oldsauktion.com	30-50	-	- - -	70-80	-	- - -	90-100	-	- - -	Ewes	- - -	-		
		50-60	-	- - -	80-90	-	- - -	100-110	-	- - -	Rams	- - -			
		60-70	-	- - -				110+	-	- - -	Bred Ewes	- - -			
16-Jul-22	Picture Butte www.picturebutteauction.ca							Feeder	-	1.47 - 2.61	Slaughter Ewes	0.94 - 0.94	-		
								Slaughter	-	1.33 - 1.98	Feeder Ewes	- - -			
											Ewe&lamb(s)	1.30 - 2.25			
											Bred ewes	- - -			
											Rams	- - -			

Ontario Live Animal Markets

18-Jul-22	OSI www.ontariosheep.org	0-50	50	2.10 - 2.58	65-80	123	2.10 - 2.50	95-110	183	1.9 - 2.24	Sheep	1.20 - 1.95	1429
		50-64	111	2.3 - 2.58	80-95	125	2.10 - 2.39	110+	134	1.8 - 1.86			
19-Jul-22	OLEX www.ontariosheep.org	0-50	104	2.00 - 3.58	65-79	330	2.28 - 2.73	95-109	582	1.98 - 2.16	Sheep	0.93 - 1.68	2152
		50-64	254	2.30 - 2.80	80-94	336	2.10 - 2.38	110+	223	1.70 - 1.85			
18-Jul-22	Embrun www.ontariosheep.org	0-50	10	1.55 - 2.75	65-79	199	2.45 - 3.20	95-109	63	2.3 - 3.00	Sheep	0.70 - 1.35	549
		50-64	39	2.50 - 3.35	80-94	203	2.42 - 3.05	110+	4	1.4 - 2.10			
14-Jul-22	Brussels www.ontariosheep.org	0-50	6	2.52 - 3.00	65-79	65	2.45 - 2.80	95-109	63	2.25 - 2.31	Sheep	1.20 - 1.95	497
		50-64	39	2.625 - 3.05	80-94	79	2.25 - 2.68	110+	32	2.2 - 2.33			

Alberta Lamb Producers does not endorse individual markets or verify prices provided.

Trends* in auction price for heavy lambs in Alberta



*Due to differences among auctions, prices are reported as 'trends' rather than averages.
This graph is updated on weeks with two or more markets reporting prices.