

Alberta Live Animal Markets: Visit individual market websites for more information about applicable auction fees and upcoming sales.

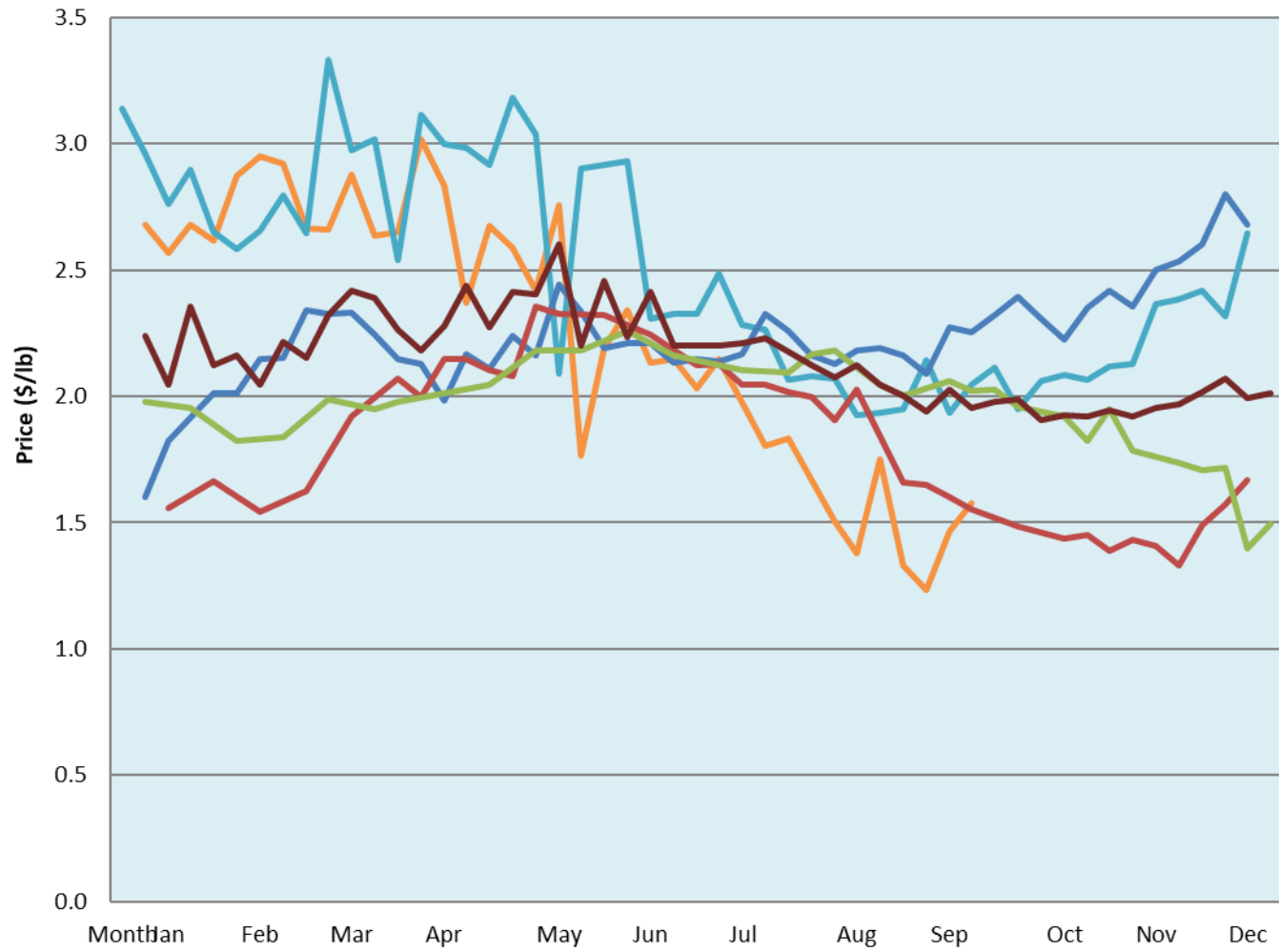
Date	Sale	Lambs (\$/lb)			Lambs (\$/lb)			Lambs (\$/lb)			Sheep(\$/lb): Bred ewes \$/hd		Total Head		
		Weight (lbs)	Head	low - high	Weight (lbs)	Head	low - high	Weight (lbs)	Head	low - high	low - high				
19-Sep-22	Beaver Hill www.beaverhillauctions.com	0-54: wool	-	1.80 - 2.40	70-85: wool	-	1.70 - 2.13	86-105:wool	-	1.50 - 1.86	Ewes: wool	0.90 - 1.45	941		
		0-54: hair	-	1.60 - 2.25				86-105:hair			-	1.50 - 1.81		Ewes: hair	0.90 - 1.65
		55-69: wool	-	2.00 - 2.55				106+:wool			-	1.45 - 1.70		Rams: wool	1.10 - 1.76
		55-69: hair	-	1.80 - 2.15	70-85: hair	-	1.70 - 2.00	106+:hair	-	0.90 - 1.70	Rams: hair	1.27 - 1.60			
												Bred Ewes		1.90 - 2.75	
No sale this week	VJV Westlock www.vjvauction.com	0-69: wool	-	- - -	70-85: wool	-	- - -	86-105: wool	-	- - -	Ewes: wool	- - -	-		
								86-105: hair	-	- - -	Ewes: hair	- - -			
									106+: wool	-	- - -	Rams: wool		- - -	
		0-69: hair	-	- - -	70-85: hair	-	- - -	106+: hair	-	- - -	Rams: hair	- - -			
												Bred Ewes:wool		- - -	
20-Sep-22	Olds Auction www.oldsauktion.com	30-50	-	1.9 - 1.93	70-80	-	1.77 - 1.95	90-100	-	1.6 - 1.70	Ewes	1.00 - 1.16	293 (incl.goats)		
		50-60	-	1.8 - 1.92	80-90	-	1.72 - 1.94	100-110	-	1.57 - 1.62	Rams	0.90 - 1.25			
		60-70	-	1.83 - 2.01				110+	-	1.18 - 1.53	Bred Ewes	- - -			
17-Sep-22	Picture Butte www.picturebutteauction.ca							Feeder	-	2.05 - 2.12	Slaughter Ewes	0.80 - 0.88	-		
								Slaughter	-	1.73 - 1.86	Feeder Ewes	- - -			
											Ewe&lamb(s)	- - -			
											Bred ewes	- - -			
										Rams	- - -				

Ontario Live Animal Markets

19-Sep-22	OSI www.ontariosheep.org	0-50	15	2.70 - 3.15	65-80	135	2.10 - 2.65	95-110	146	1.89 - 1.99	Sheep	1.21 - 1.89	1170
		50-64	55	2.65 - 2.70	80-95	103	2.00 - 2.30	110+	0	0 - 0.00			
20-Sep-22	OLEX www.ontariosheep.org	0-50	143	2.50 - 3.40	65-79	586	1.90 - 2.30	95-109	753	1.69 - 2.05	Sheep	1.25 - 1.80	3538
		50-64	360	2.43 - 2.65	80-94	693	1.90 - 2.25	110+	385	1.58 - 1.85			
19-Sep-22	Embrun www.ontariosheep.org	0-50	2	1.50 - 2.40	65-79	124	2.57 - 2.80	95-109	37	2.05 - 2.64	Sheep	0.75 - 1.30	271
		50-64	3	2.10 - 2.65	80-94	65	2.54 - 2.74	110+	15	1.7 - 2.17			
15-Sep-22	Brussels www.ontariosheep.org	0-50	29	2.125 - 2.45	65-79	139	2.175 - 2.90	95-109	105	1.86 - 2.09	Sheep	1.30 - 2.10	535
		50-64	31	2 - 2.60	80-94	111	1.9 - 2.35	110+	36	1.75 - 2.12			

Alberta Lamb Producers does not endorse individual markets or verify prices provided.

Trends* in auction price for heavy lambs in Alberta



— 2022 — 2021 — 2020 — 2019 — 2018 — 5 yr ave

*Due to differences among auctions, prices are reported as 'trends' rather than averages.
This graph is updated on weeks with two or more markets reporting prices.