

**Alberta Live Animal Markets: Visit individual market websites for more information about applicable auction fees and upcoming sales.**

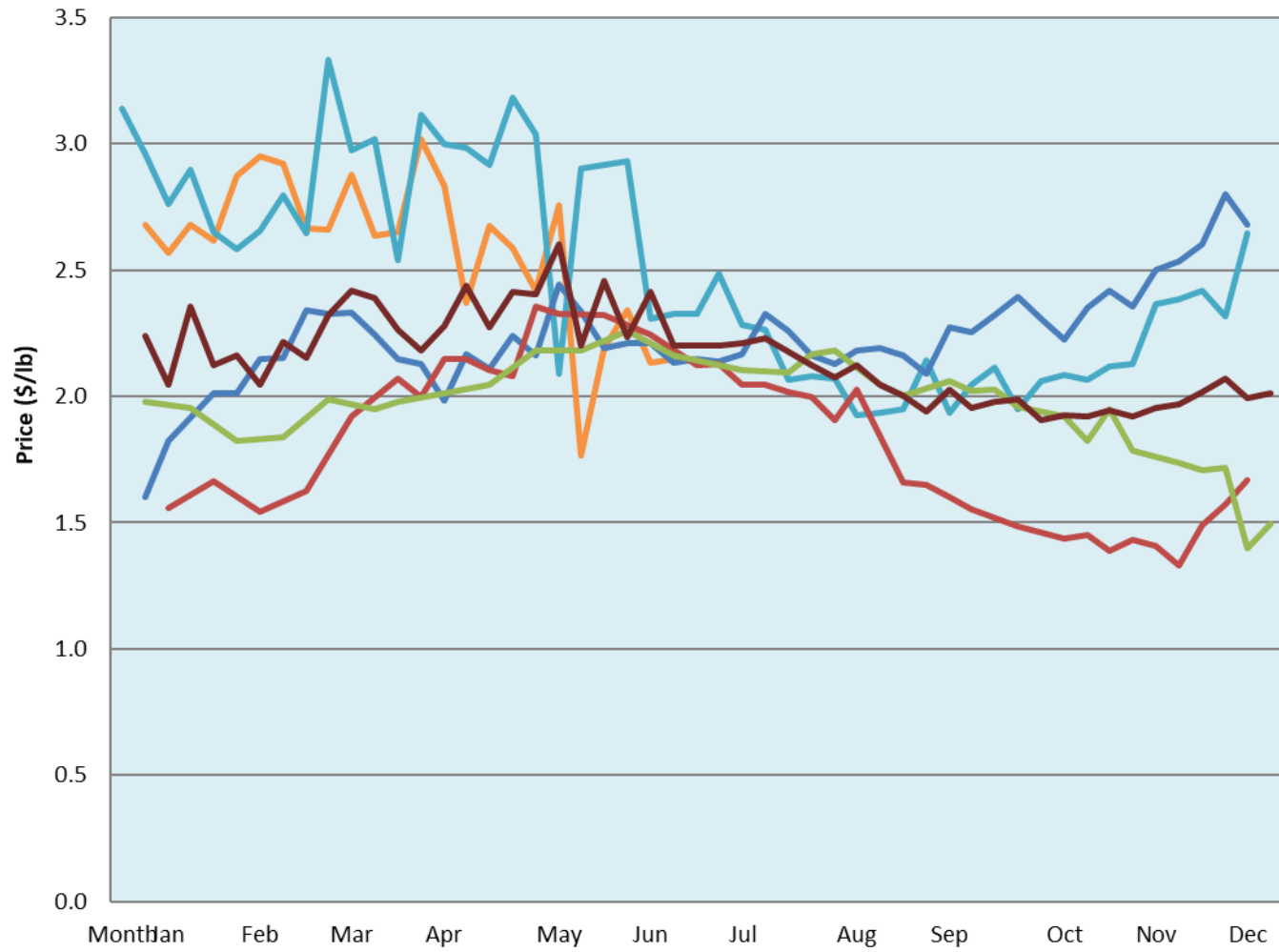
Date	Sale	Lambs (\$/lb)			Lambs (\$/lb)			Lambs (\$/lb)			Sheep(\$/lb): Bred ewes \$/hd		Total Head		
		Weight (lbs)	Head	low - high	Weight (lbs)	Head	low - high	Weight (lbs)	Head	low - high	low - high	low - high			
20-Jun-22	Beaver Hill <a href="http://www.beaverhillauctions.com">www.beaverhillauctions.com</a>	0-54: wool	-	1.90 - 2.60	70-85: wool	-	2.18 - 2.70	86-105:wool	-	2.15 - 2.69	Ewes: wool	0.90 - 1.63	822		
		0-54: hair	-	1.60 - 2.20				86-105:hair			-	2.15 - 2.35		Rams: wool	1.05 - 1.50
		55-69: wool	-	2.15 - 2.65	70-85: hair	-	1.90 - 2.35	106+:wool	-	2.10 - 2.30	Rams: hair	1.13 - 2.10			
		55-69: hair	-	1.90 - 2.30				106+:hair			-	0.80 - 2.10		Bred Ewes	0.00 - 0.00
			-								-			Ewe&Lamb(s)	0.00 - 0.00
No sale this week	VJV Westlock <a href="http://www.vjvauction.com">www.vjvauction.com</a>	0-69: wool	-	- - -	70-85: wool	-	- - -	86-105: wool	-	- - -	Ewes: wool	- - -	-		
			-			-		86-105: hair	-	- - -	Ewes: hair	- - -			
			-			-			106+: wool	-	- - -	Rams: wool		- - -	
		0-69: hair	-	- - -	70-85: hair	-	- - -	106+: hair	-	- - -	Rams: hair	- - -			
			-			-				-	- - -	Bred Ewes:wool		- - -	
21-Jun-22	Olds Auction <a href="http://www.oldsauktion.com">www.oldsauktion.com</a>	30-50	-	3.05 - 3.12	70-80	-	2.34 - 2.41	90-100	-	2.04 - 2.39	Ewes	1.17 - 1.36	339  (incl.goats)		
		50-60	-	2.35 - 2.89	80-90	-	2.21 - 2.50	100-110	-	2.04 - 2.26	Rams	1.10 - 1.34			
		60-70	-	2.01 - 2.35				110+	-	2.03 - 2.17	Bred Ewes	- - -			
Information unavailable	Picture Butte <a href="http://www.picturebutteauction.ca">www.picturebutteauction.ca</a>							Feeder	-	- - -	Slaughter Ewes	- - -	-		
								Slaughter	-	- - -	Feeder Ewes	- - -			
											Ewe&lamb(s)	- - -			
											Bred ewes	- - -			
										Rams	-				

**Ontario Live Animal Markets**

20-Jun-22	OSI <a href="http://www.ontariosheep.org">www.ontariosheep.org</a>	0-50	72	2.70 - 3.08	65-80	108	2.85 - 3.08	95-110	96	2.75 - 3.01	Sheep	1.10 - 1.90	1298
		50-64	249	2.875 - 3.13	80-95	212	2.85 - 3.11	110+	106	2.31 - 2.74			
21-Jun-22	OLEX <a href="http://www.ontariosheep.org">www.ontariosheep.org</a>	0-50	151	3.35 - 3.68	65-79	482	2.88 - 3.35	95-109	645	2.90 - 3.30	Sheep	0.85 - 1.55	3839
		50-64	469	2.95 - 3.33	80-94	989	2.88 - 3.20	110+	332	2.50 - 2.85			
20-Jun-22	Embrun <a href="http://www.ontariosheep.org">www.ontariosheep.org</a>	0-50	6	2.00 - 2.50	65-79	110	3 - 3.80	95-109	181	3.15 - 3.85	Sheep	0.55 - 1.55	666
		50-64	70	2.30 - 3.25	80-94	241	3.2 - 3.85	110+	33	3.4 - 3.75			
16-Jun-22	Brussels <a href="http://www.ontariosheep.org">www.ontariosheep.org</a>	0-50	1	3.05 - 3.05	65-79	75	2.8 - 3.29	95-109	158	2.44 - 2.66	Sheep	0.75 - 2.05	552
		50-64	50	3.025 - 3.50	80-94	84	2.54 - 2.80	110+	40	2.25 - 2.55			

**Alberta Lamb Producers does not endorse individual markets or verify prices provided.**

## Trends\* in auction price for heavy lambs in Alberta



— 2022   
 — 2021   
 — 2020   
 — 2019   
 — 2018   
 — 5 yr ave

\*Due to differences among auctions, prices are reported as 'trends' rather than averages.  
 This graph is updated on weeks with two or more markets reporting prices.