

Alberta Live Animal Markets: Visit individual market websites for more information about applicable auction fees and upcoming sales.

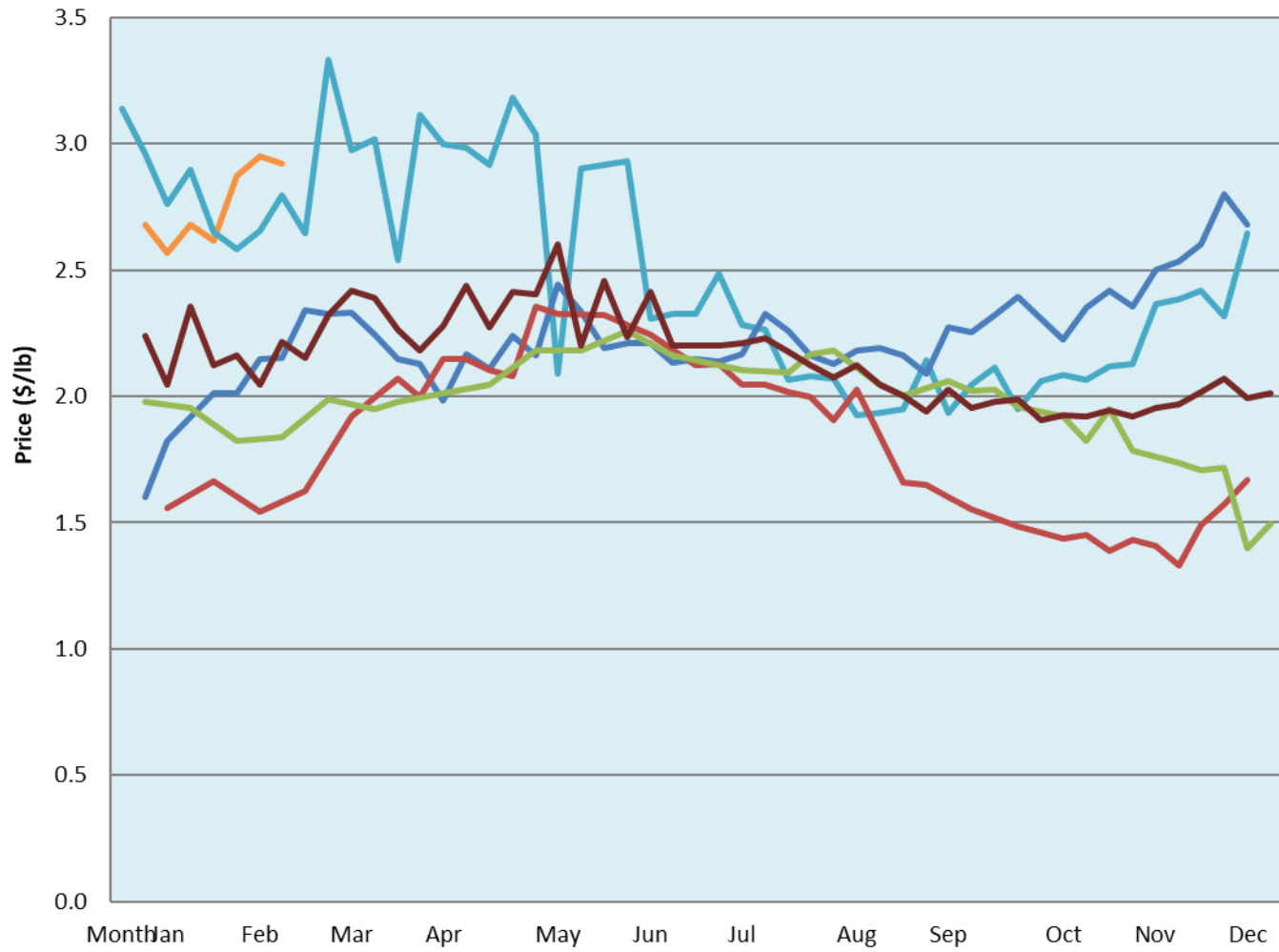
Date	Sale	Lambs (\$/lb)			Lambs (\$/lb)			Lambs (\$/lb)			Sheep(\$/lb): Bred ewes \$/hd		Total Head		
		Weight (lbs)	Head	low - high	Weight (lbs)	Head	low - high	Weight (lbs)	Head	low - high	low - high	low - high			
No sale this week	Beaver Hill www.beaverhillauctions.com	0-54: wool	-	0.00 - 0.00	70-85: wool	-	0.00 - 0.00	86-105:wool	-	0.00 - 0.00	Ewes: wool	0.00 - 0.00	0		
		0-54: hair	-	0.00 - 0.00				86-105:hair			-	0.00 - 0.00		Ewes: hair	0.00 - 0.00
		55-69: wool	-	0.00 - 0.00	70-85: hair	-	0.00 - 0.00	106+:wool	-	0.00 - 0.00	Rams: wool	0.00 - 0.00			
		55-69: hair	-	0.00 - 0.00				106+:hair			-	0.00 - 0.00		Rams: hair	0.00 - 0.00
			-								-			Bred Ewes	0.00 - 0.00
								-	0.00 - 0.00	Ewe&Lamb(s)	0.00 - 0.00				
No sale this week	VJV Westlock www.vjvauction.com	0-69: wool	-	- - -	70-85: wool	-	- - -	86-105: wool	-	- - -	Ewes: wool	- - -	-		
			-					86-105: hair			-	- - -		Ewes: hair	- - -
		0-69: hair	-	- - -	70-85: hair	-	- - -	106+: wool	-	- - -	Rams: wool	- - -			
			-					106+: hair		-	- - -	Rams: hair		- - -	
			-							-	- - -	Bred Ewes:wool		- - -	
			-							-	- - -	Ewe&Lamb:hair		- - -	
22-Feb-22	Olds Auction www.oldsauktion.com	30-50	-	2.3 - 2.69	70-80	-	3.6 - 3.71	90-100	-	3 - 3.13	Ewes	1.75 - 1.84	61 (incl.goats)		
		50-60	-	3.1 - 3.46	80-90	-	2.92 - 3.21	100-110	-	3 - 3.13	Rams	- - -			
		60-70	-	3.32 - 3.71				110+	-	2.77 - 3.07	Bred Ewes	- - -			
Information unavailable	Picture Butte www.picturebutteauction.ca							Feeder	-	- - -	Slaughter Ewes	- - -	-		
								Slaughter	-	- - -	Feeder Ewes	- - -			
											Ewe&lamb(s)	- - -			
											Bred ewes	- - -			
												Rams		-	

Ontario Live Animal Markets

21-Feb-22	OSI www.ontariosheep.org	0-50	16	4.33 - 4.33	65-80	40	3.90 - 4.20	95-110	27	3.43 - 3.56	Sheep	1.93 - 2.45	750
		50-64	87	3.55 - 4.35	80-95	118	3.40 - 3.68	110+	4	2.2 - 3.35			
22-Feb-22	OLEX www.ontariosheep.org	0-50	54	5.13 - 5.60	65-79	396	3.98 - 4.50	95-109	264	3.50 - 3.95	Sheep	1.50 - 2.45	1596
		50-64	154	4.20 - 4.75	80-94	271	3.73 - 4.10	110+	241	3.00 - 3.75			
21-Feb-22	Embrun www.ontariosheep.org	0-50	4	3.10 - 3.10	65-79	94	3.9 - 4.25	95-109	59	2.6 - 3.80	Sheep	1.50 - 2.00	348
		50-64	18	4.20 - 4.65	80-94	93	3.7 - 4.15	110+	28	2.45 - 3.50			
17-Feb-22	Brussels www.ontariosheep.org	0-50	4	4.7 - 4.70	65-79	49	3.9 - 4.13	95-109	107	3 - 3.11	Sheep	2.10 - 2.75	255
		50-64	34	4.05 - 4.68	80-94	41	3.1 - 3.40	110+	6	2.99 - 3.02			

Alberta Lamb Producers does not endorse individual markets or verify prices provided.

Trends* in auction price for heavy lambs in Alberta



— 2022
 — 2021
 — 2020
 — 2019
 — 2018
 — 5 yr ave

*Due to differences among auctions, prices are reported as 'trends' rather than averages.
 This graph is updated on weeks with two or more markets reporting prices.