

**Alberta Live Animal Markets: Visit individual market websites for more information about applicable auction fees and upcoming sales.**

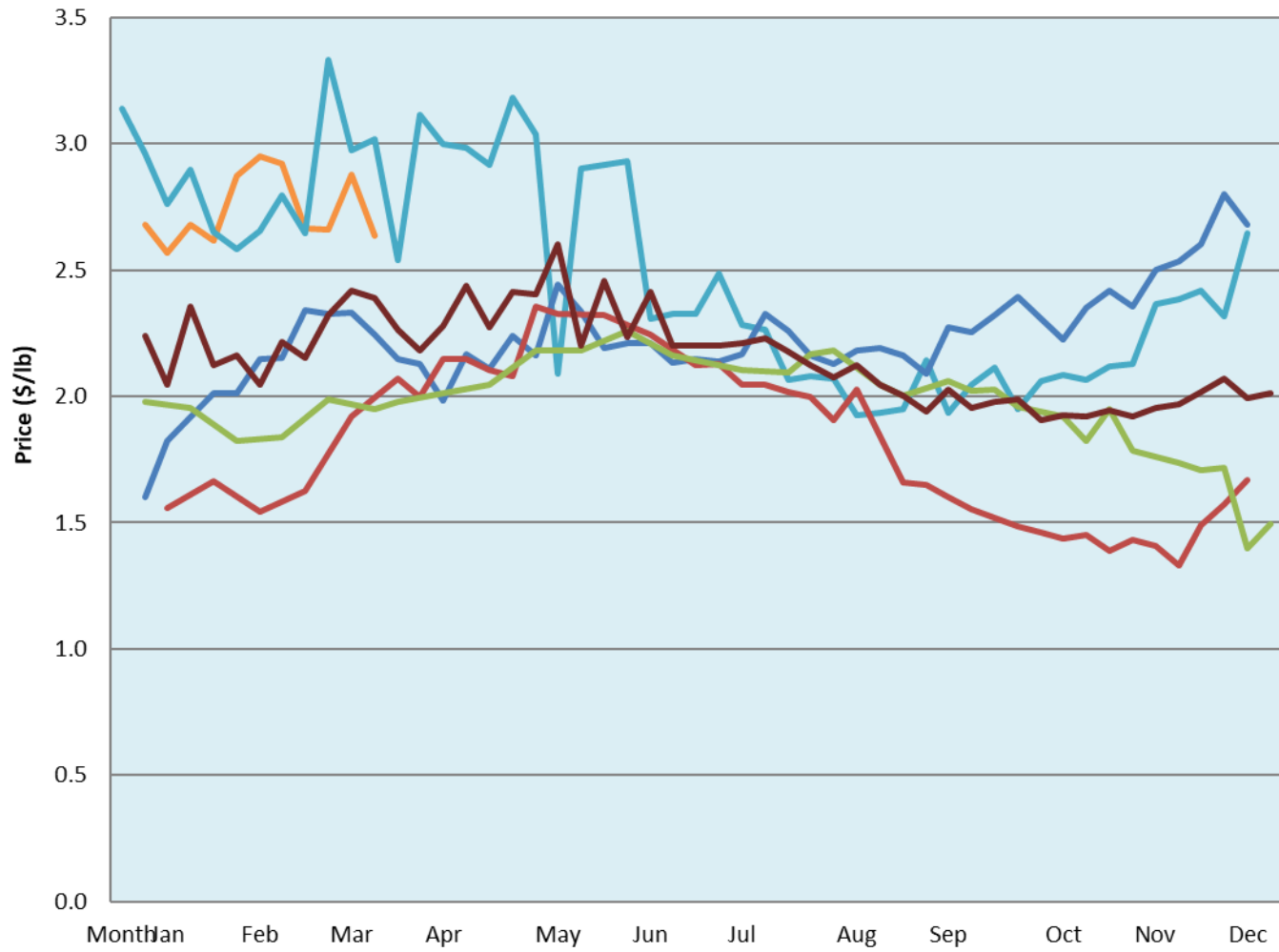
Date	Sale	Lambs (\$/lb)			Lambs (\$/lb)			Lambs (\$/lb)			Sheep(\$/lb): Bred ewes \$/hd		Total Head		
		Weight (lbs)	Head	low - high	Weight (lbs)	Head	low - high	Weight (lbs)	Head	low - high	low - high				
21-Mar-22	Beaver Hill <a href="http://www.beaverhillauctions.com">www.beaverhillauctions.com</a>	0-54: wool	-	2.50 - 3.45	70-85: wool	-	3.10 - 3.60	86-105:wool	-	2.70 - 3.35	Ewes: wool	1.30 - 2.30	1013		
		0-54: hair	-	2.00 - 2.80				86-105:hair			-	2.65 - 3.30		Rams: wool	1.25 - 1.85
		55-69: wool	-	3.20 - 3.95				106+:wool			-	2.35 - 2.85		Rams: hair	1.40 - 1.75
		55-69: hair	-	2.60 - 3.35	70-85: hair	-	2.80 - 3.20	106+:hair	-	1.40 - 2.80	Bred Ewes	2.70 - 3.90			
			-								Ewe&Lamb(s)	0.00 - 0.00			
Information unavailable	VJV Westlock <a href="http://www.vjvauction.com">www.vjvauction.com</a>	0-69: wool	-	- - -	70-85: wool	-	- - -	86-105: wool	-	- - -	Ewes: wool	- - -	-		
			-					86-105: hair	-	- - -	Ewes: hair	- - -			
			-						106+: wool	-	- - -	Rams: wool		- - -	
		0-69: hair	-	- - -	70-85: hair	-	- - -	106+: hair	-	- - -	Rams: hair	- - -			
			-								Bred Ewes:wool	- - -			
										Ewe&Lamb:hair	- - -				
22-Mar-22	Olds Auction <a href="http://www.oldsauktion.com">www.oldsauktion.com</a>	30-50	-	2.75 - 3.61	70-80	-	3.24 - 3.33	90-100	-	3.05 - 3.20	Ewes	1.21 - 1.54	174  (incl.goats)		
		50-60	-	2.8 - 3.51	80-90	-	3.24 - 3.20	100-110	-	3.05 - 3.18	Rams	1.77 - 1.84			
		60-70	-	3.33 - 3.33				110+	-	3.05 - -	Bred Ewes	- - -			
19-Mar-22	Picture Butte <a href="http://www.picturebutteauction.ca">www.picturebutteauction.ca</a>							Feeder	-	2.8 - 3.10	Slaughter Ewes	1.25 - 1.36	-		
								Slaughter	-	2.1 - 2.30	Feeder Ewes	- - -			
											Ewe&lamb(s)	3.10 - 3.45			
											Bred ewes	- - -			
										Rams	-				

**Ontario Live Animal Markets**

21-Mar-22	OSI <a href="http://www.ontariosheep.org">www.ontariosheep.org</a>	0-50	4	4.50 - 4.50	65-80	451	3.50 - 4.27	95-110	41	3.19 - 3.60	Sheep	1.26 - 1.90	1468
		50-64	84	4.175 - 4.30	80-95	344	3.25 - 3.60	110+	14	1.5 - 3.20			
22-Mar-22	OLEX <a href="http://www.ontariosheep.org">www.ontariosheep.org</a>	0-50	158	4.85 - 5.65	65-79	205	3.68 - 4.05	95-109	639	3.43 - 3.69	Sheep	0.45 - 2.05	2473
		50-64	350	3.98 - 4.55	80-94	493	3.30 - 3.78	110+	280	3.20 - 3.52			
21-Mar-22	Embrun <a href="http://www.ontariosheep.org">www.ontariosheep.org</a>	0-50	21	3.95 - 4.65	65-79	110	4 - 4.37	95-109	46	3.9 - 4.25	Sheep	1.22 - 1.60	469
		50-64	72	4.05 - 4.50	80-94	146	3.92 - 4.26	110+	4	3.05 - 3.50			
17-Mar-22	Brussels <a href="http://www.ontariosheep.org">www.ontariosheep.org</a>	0-50	1	4.35 - 4.35	65-79	99	3.625 - 4.13	95-109	94	3.4 - 3.53	Sheep	1.00 - 2.60	415
		50-64	34	4.025 - 4.48	80-94	56	3.5 - 3.85	110+	27	2.65 - 3.00			

**Alberta Lamb Producers does not endorse individual markets or verify prices provided.**

### Trends\* in auction price for heavy lambs in Alberta



— 2022   
 — 2021   
 — 2020   
 — 2019   
 — 2018   
 — 5 yr ave

\*Due to differences among auctions, prices are reported as 'trends' rather than averages.  
 This graph is updated on weeks with two or more markets reporting prices.