

**Alberta Live Animal Markets: Visit individual market websites for more information about applicable auction fees and upcoming sales.**

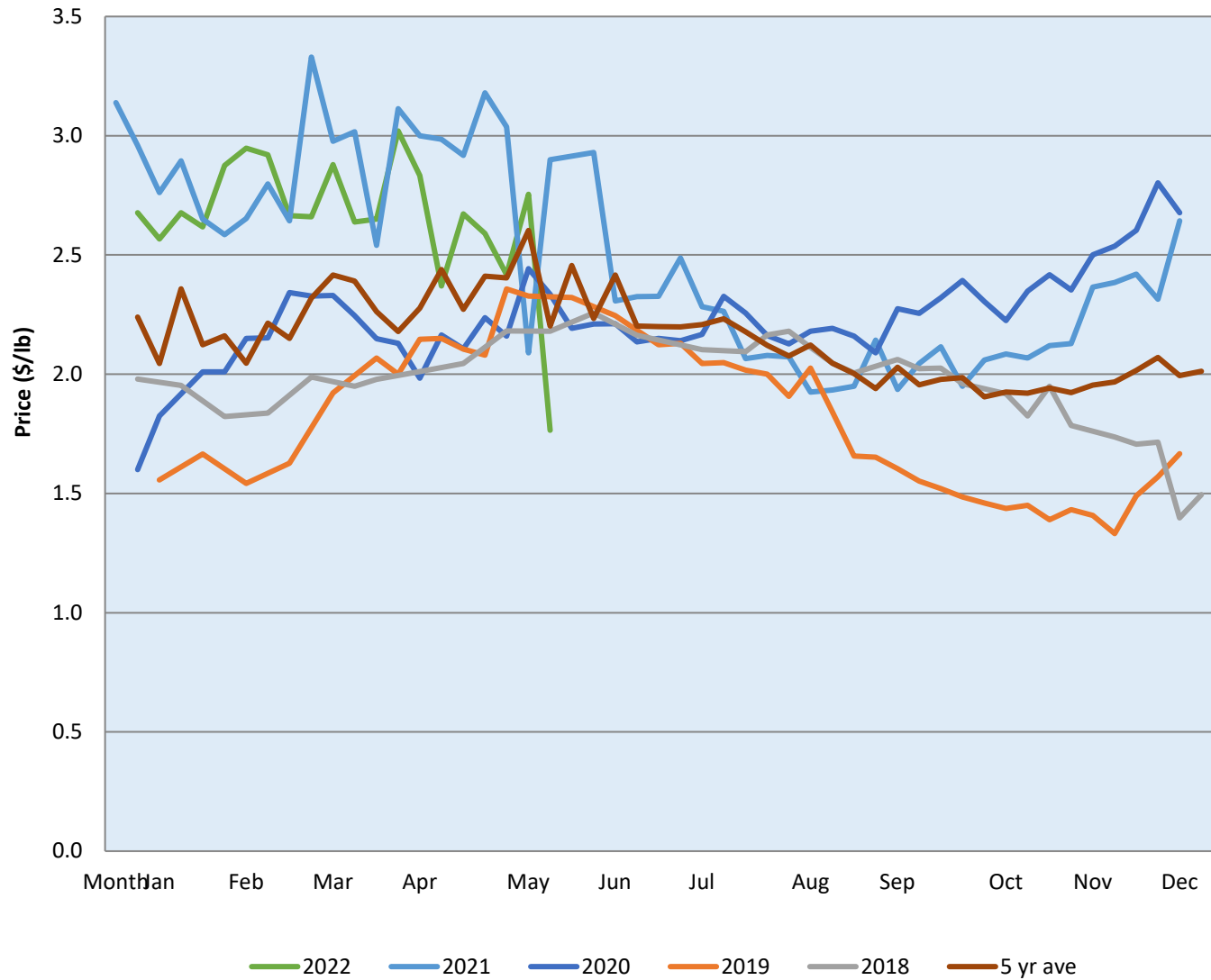
Date	Sale	Lambs (\$/lb)			Lambs (\$/lb)			Lambs (\$/lb)			Sheep(\$/lb): Bred ewes \$/hd		Total Head		
		Weight (lbs)	Head	low - high	Weight (lbs)	Head	low - high	Weight (lbs)	Head	low - high	low - high				
No sale this week	Beaver Hill <a href="http://www.beaverhillauctions.com">www.beaverhillauctions.com</a>	0-54: wool	-	0.00 - 0.00	70-85: wool	-	0.00 - 0.00	86-105:wool	-	0.00 - 0.00	Ewes: wool	0.00 - 0.00	0		
		0-54: hair	-	0.00 - 0.00				86-105:hair			-	0.00 - 0.00		Ewes: hair	0.00 - 0.00
		55-69: wool	-	0.00 - 0.00	70-85: hair	-	0.00 - 0.00	106+:wool	-	0.00 - 0.00	Rams: wool	0.00 - 0.00			
		55-69: hair	-	0.00 - 0.00				106+:hair			-	0.00 - 0.00		Rams: hair	0.00 - 0.00
			-								-			Bred Ewes	0.00 - 0.00
					-			-		Ewe&Lamb(s)	0.00 - 0.00				
No sale this week	VJV Westlock <a href="http://www.vjvauction.com">www.vjvauction.com</a>	0-69: wool	-	- - -	70-85: wool	-	- - -	86-105: wool	-	- - -	Ewes: wool	- - -	-		
			-					86-105: hair			-	- - -		Ewes: hair	- - -
		0-69: hair	-	- - -	70-85: hair	-	- - -	106+: wool	-	- - -	Rams: wool	- - -			
			-					106+: hair			-	- - -		Rams: hair	- - -
			-								-			Bred Ewes:wool	- - -
				-			-		Ewe&Lamb:hair	- - -					
Information unavailable	Olds Auction <a href="http://www.oldsauktion.com">www.oldsauktion.com</a>	30-50	-	- - -	70-80	-	- - -	90-100	-	- - -	Ewes	- - -	-		
		50-60	-	- - -	80-90	-	- - -	100-110	-	- - -	Rams	- - -			
		60-70	-	- - -				110+	-	- - -	Bred Ewes	- - -		(incl.goats)	
21-May-22	Picture Butte <a href="http://www.picturebutteauction.ca">www.picturebutteauction.ca</a>							Feeder	-	2.65 - 3.67	Slaughter Ewes	0.60 - 1.71	-		
								Slaughter	-	1 - 2.53	Feeder Ewes	- - -			
											Ewe&lamb(s)	3.00 - 3.00			
											Bred ewes	- - -			
										Rams	0.95 - 1.20				

**Ontario Live Animal Markets**

23-May-22	OSI <a href="http://www.ontariosheep.org">www.ontariosheep.org</a>	0-50	5	3.25 - 3.25	65-80	84	3.22 - 3.43	95-110	165	2.95 - 3.20	Sheep	0.90 - 1.95	1043
		50-64	67	3.375 - 3.75	80-95	245	2.93 - 3.25	110+	11	3.25 - 3.26			
24-May-22	OLEX <a href="http://www.ontariosheep.org">www.ontariosheep.org</a>	0-50	49	2.75 - 3.45	65-79	510	2.68 - 3.05	95-109	1156	2.40 - 2.60	Sheep	0.60 - 1.85	2987
		50-64	377	2.80 - 3.15	80-94	485	2.45 - 2.95	110+	57	2.20 - 2.83			
23-May-22	Embrun <a href="http://www.ontariosheep.org">www.ontariosheep.org</a>	0-50	15	2.90 - 3.53	65-79	178	3.175 - 3.45	95-109	53	3.26 - 3.40	Sheep	0.75 - 2.20	515
		50-64	76	3.25 - 3.55	80-94	92	3.2 - 3.38	110+	24	2.25 - 3.30			
19-May-22	Brussels <a href="http://www.ontariosheep.org">www.ontariosheep.org</a>	0-50	32	3.475 - 3.60	65-79	181	3.45 - 3.70	95-109	74	3.38 - 3.48	Sheep	1.15 - 2.25	611
		50-64	63	3.49 - 3.75	80-94	109	3.4 - 3.58	110+	9	1.525 - 1.53			

**Alberta Lamb Producers does not endorse individual markets or verify prices provided.**

## Trends\* in auction price for heavy lambs in Alberta



\*Due to differences among auctions, prices are reported as 'trends' rather than averages.  
 This graph is updated on weeks with two or more markets reporting prices.