

**Alberta Live Animal Markets: Visit individual market websites for more information about applicable auction fees and upcoming sales.**

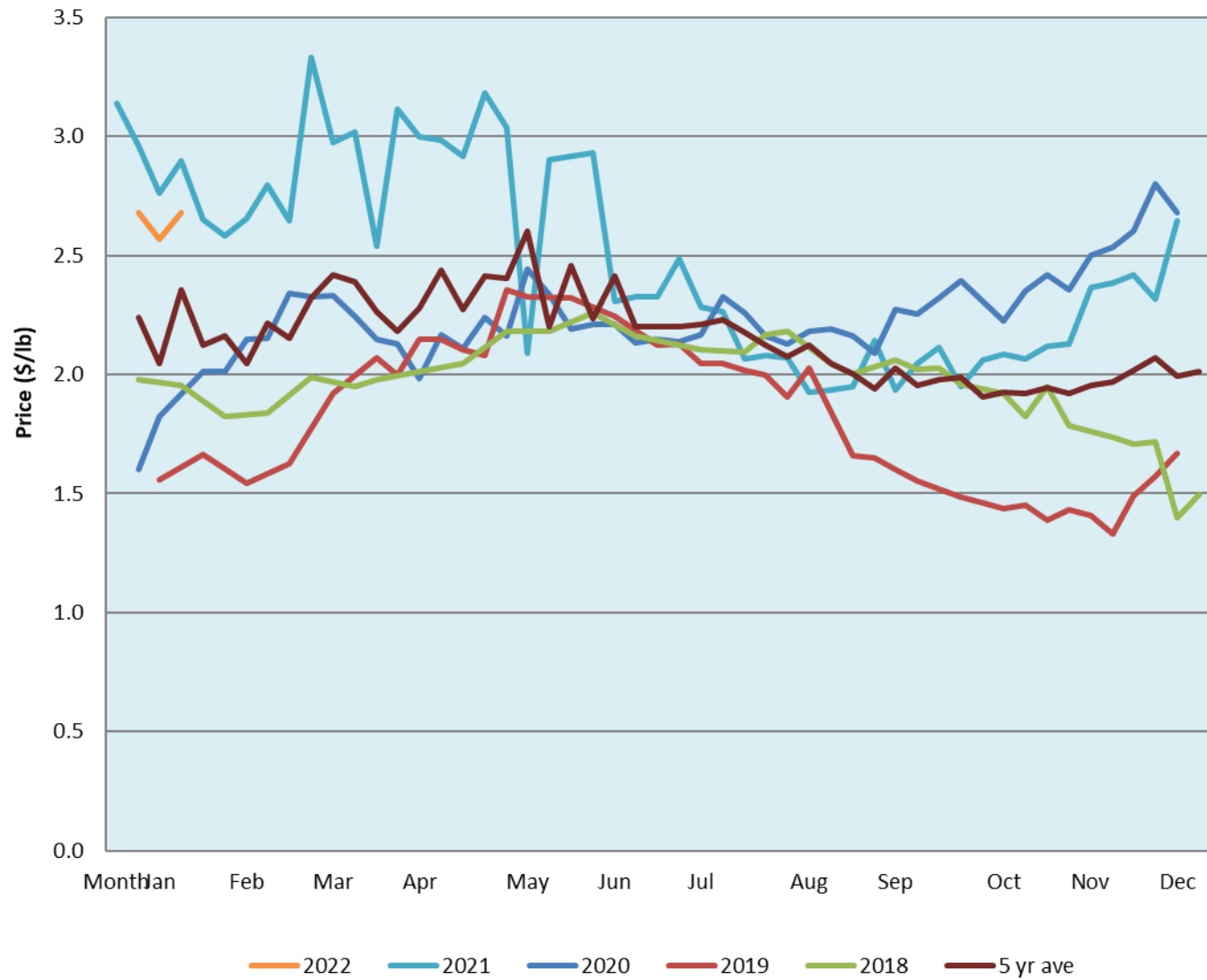
Date	Sale	Lambs (\$/lb)			Lambs (\$/lb)			Lambs (\$/lb)			Sheep(\$/lb): Bred ewes \$/hd		Total Head		
		Weight (lbs)	Head	low - high	Weight (lbs)	Head	low - high	Weight (lbs)	Head	low - high	low - high				
24-Jan-22	Beaver Hill <a href="http://www.beaverhillauctions.com">www.beaverhillauctions.com</a>	0-54: wool	-	3.40 - 4.15	70-85: wool	-	3.15 - 4.00	86-105:wool	-	2.85 - 3.45	Ewes: wool	1.50 - 2.35	1542		
		0-54: hair	-	2.80 - 3.75				86-105:hair			-	2.67 - 3.12		Ewes: hair	1.80 - 2.45
		55-69: wool	-	3.30 - 4.20				106+:wool			-	2.55 - 3.22		Rams: wool	1.30 - 1.75
		55-69: hair	-	2.90 - 3.95	70-85: hair	-	2.90 - 3.60	106+:hair	-	1.80 - 2.80	Rams: hair	1.75 - 2.05			
											Bred Ewes	2.70 - 4.00			
No sale this week	VJV Westlock <a href="http://www.vjvauction.com">www.vjvauction.com</a>	0-69: wool	-	- - -	70-85: wool	-	- - -	86-105: wool	-	- - -	Ewes: wool	- - -	-		
			-					86-105: hair	-	- - -	Ewes: hair	- - -			
			-						106+: wool	-	- - -	Rams: wool		- - -	
		0-69: hair	-	- - -	70-85: hair	-	- - -	106+: hair	-	- - -	Rams: hair	- - -			
			-								Bred Ewes:wool	- - -			
information unavailable	Olds Auction <a href="http://www.oldsauktion.com">www.oldsauktion.com</a>	30-50	-	- - -	70-80	-	- - -	90-100	-	- - -	Ewes	- - -	-		
		50-60	-	- - -	80-90	-	- - -	100-110	-	- - -	Rams	- - -			
		60-70	-	- - -				110+	-	- - -	Bred Ewes	- - -			
22-Jan-22	Picture Butte <a href="http://www.picturebutteauction.ca">www.picturebutteauction.ca</a>							Feeder	-	2.75 - 2.93	Slaughter Ewes	1.44 - 1.69	-		
								Slaughter	-	2.38 - 2.56	Feeder Ewes	- - -			
											Ewe&lamb(s)	- - -			
											Bred ewes	- - -			
										Rams	1.72 - 1.98				

**Ontario Live Animal Markets**

24-Jan-22	OSI <a href="http://www.ontariosheep.org">www.ontariosheep.org</a>	0-50	12	2.90 - 4.30	65-80	85	3.95 - 4.22	95-110	22	3.16 - 3.70	Sheep	1.58 - 2.20	604
		50-64	31	3.9 - 4.25	80-95	53	3.70 - 4.00	110+	18	3.05 - 3.23			
25-Jan-22	OLEX <a href="http://www.ontariosheep.org">www.ontariosheep.org</a>	0-50	56	5.25 - 5.90	65-79	358	4.15 - 4.55	95-109	390	3.41 - 2.98	Sheep	1.38 - 2.70	2307
		50-64	214	4.33 - 4.75	80-94	614	3.88 - 4.23	110+	323	3.25 - 3.83			
24-Jan-22	Embrun <a href="http://www.ontariosheep.org">www.ontariosheep.org</a>	0-50	2	3.10 - 3.70	65-79	92	4.05 - 4.35	95-109	45	3.55 - 4.00	Sheep	1.09 - 1.80	296
		50-64	17	4.00 - 4.30	80-94	95	3.85 - 4.30	110+	8	2.2 - 3.45			
20-Jan-22	Brussels <a href="http://www.ontariosheep.org">www.ontariosheep.org</a>	0-50	0	0 - 0.00	65-79	82	3.775 - 4.43	95-109	80	3.5 - 3.72	Sheep	1.00 - 2.35	295
		50-64	57	4.325 - 4.50	80-94	18	3.77 - 3.85	110+	25	2.5 - 3.27			

**Alberta Lamb Producers does not endorse individual markets or verify prices provided.**

## Trends\* in auction price for heavy lambs in Alberta



\*Due to differences among auctions, prices are reported as 'trends' rather than averages.  
This graph is updated on weeks with two or more markets reporting prices.