

**Alberta Live Animal Markets: Visit individual market websites for more information about applicable auction fees and upcoming sales**

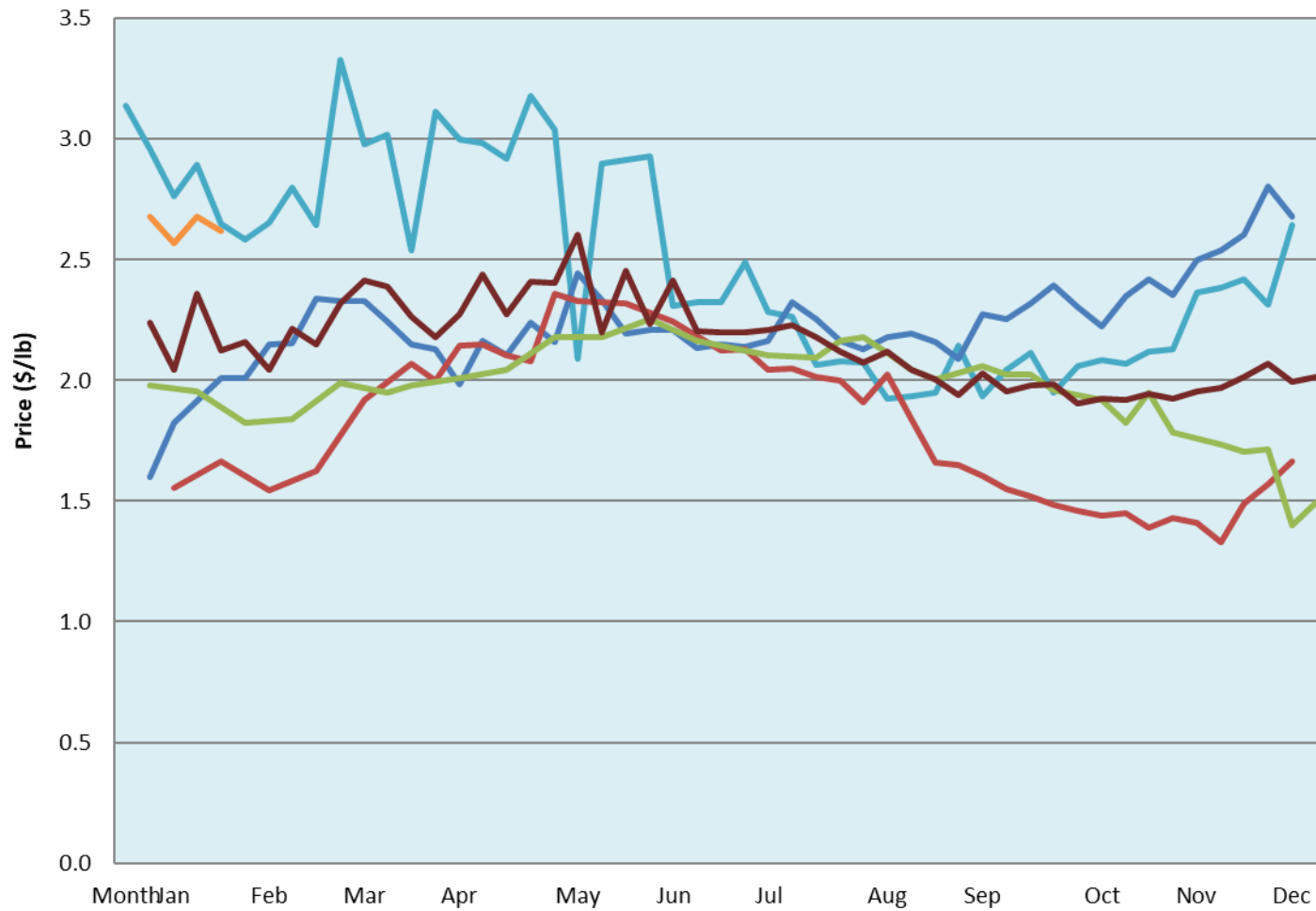
Date	Sale	Lambs (\$/lb)			Lambs (\$/lb)			Lambs (\$/lb)			Sheep(\$/lb): Bred ewes \$/hd		Total Head		
		Weight (lbs)	Head	low - high	Weight (lbs)	Head	low - high	Weight (lbs)	Head	low - high	low - high				
31-Jan-22	Beaver Hill <a href="http://www.beaverhillauctions.com">www.beaverhillauctions.com</a>	0-54: wool	-	2.80 - 3.75	70-85: wool	-	3.25 - 4.00	86-105:wool	-	2.95 - 3.63	Ewes: wool	1.50 - 2.72	1198		
		0-54: hair	-	2.80 - 3.45				86-105:hair			-	2.67 - 3.20		Ewes: hair	1.50 - 2.50
		55-69: wool	-	3.30 - 4.20	70-85: hair	-	2.80 - 3.40	106+:wool	-	2.55 - 3.12	Rams: wool	1.50 - 2.10			
		55-69: hair	-	2.80 - 3.45				106+:hair			-	1.50 - 2.80		Rams: hair	1.50 - 2.25
			-								-			Bred Ewes	3.00 - 4.40
					-			-		Ewe&Lamb(s)	0.00 - 0.00				
No sale this week	VJV Westlock <a href="http://www.vjvauction.com">www.vjvauction.com</a>	0-69: wool	-	- - -	70-85: wool	-	- - -	86-105: wool	-	- - -	Ewes: wool	- - -	-		
			-					86-105: hair			-	- - -		Ewes: hair	- - -
			-					106+: wool			-	- - -		Rams: wool	- - -
		0-69: hair	-	- - -	70-85: hair	-	- - -	106+: hair	-	- - -	Rams: hair	- - -			
			-						-	- - -	Bred Ewes:wool	- - -			
			-						-	- - -	Ewe&Lamb:hair	- - -			
information unavailable	Olds Auction <a href="http://www.oldsauction.com">www.oldsauction.com</a>	30-50	-	- - -	70-80	-	- - -	90-100	-	- - -	Ewes	- - -	-		
		50-60	-	- - -	80-90	-	- - -	100-110	-	- - -	Rams	- - -			
		60-70	-	- - -				110+	-	- - -	Bred Ewes	- - -		(incl.goats)	
27-Jan-22	Picture Butte <a href="http://www.picturebutteauction.ca">www.picturebutteauction.ca</a>							Feeder	-	2.97 - 3.18	Slaughter Ewes	1.35 - 1.54	-		
								Slaughter	-	2.26 - 2.54	Feeder Ewes	- - -			
											Ewe&lamb(s)	- - -			
											Bred ewes	- - -			
											Rams	1.80 - 1.85			

**Ontario Live Animal Markets**

31-Jan-22	OSI <a href="http://www.ontariosheep.org">www.ontariosheep.org</a>	0-50	11	4.08 - 5.03	65-80	172	3.98 - 4.36	95-110	91	3.6 - 3.76	Sheep	2.06 - 2.82	938
		50-64	228	3.85 - 4.43	80-95	95	3.40 - 4.00	110+	19	3.2 - 3.68			
1-Feb-22	OLEX <a href="http://www.ontariosheep.org">www.ontariosheep.org</a>	0-50	40	4.75 - 5.20	65-79	541	3.70 - 4.25	95-109	690	3.25 - 3.60	Sheep	1.60 - 2.60	3012
		50-64	257	4.05 - 4.43	80-94	837	3.23 - 3.60	110+	333	2.86 - 3.23			
31-Jan-22	Embrun <a href="http://www.ontariosheep.org">www.ontariosheep.org</a>	0-50	0	0.00 - 0.00	65-79	42	4.25 - 4.40	95-109	18	3.85 - 4.00	Sheep	1.35 - 1.85	173
		50-64	15	4.25 - 4.70	80-94	56	4.05 - 4.35	110+	39	2.45 - 3.25			
27-Jan-22	Brussels <a href="http://www.ontariosheep.org">www.ontariosheep.org</a>	0-50	0	0 - 0.00	65-79	82	3.9 - 4.33	95-109	80	3.875 - 4.04	Sheep	1.28 - 2.75	295
		50-64	57	3.25 - 4.45	80-94	18	3.875 - 4.04	110+	25	2.8 - 3.66			

Alberta Lamb Producers does not endorse individual markets or verify prices provided.

### Trends\* in auction price for heavy lambs in Alberta



— 2022   
 — 2021   
 — 2020   
 — 2019   
 — 2018   
 — 5 yr ave

\*Due to differences among auctions, prices are reported as 'trends' rather than averages.  
 This graph is updated on weeks with two or more markets reporting prices.