

Alberta Live Animal Markets: Visit individual market websites for more information about applicable auction fees and upcoming sales.

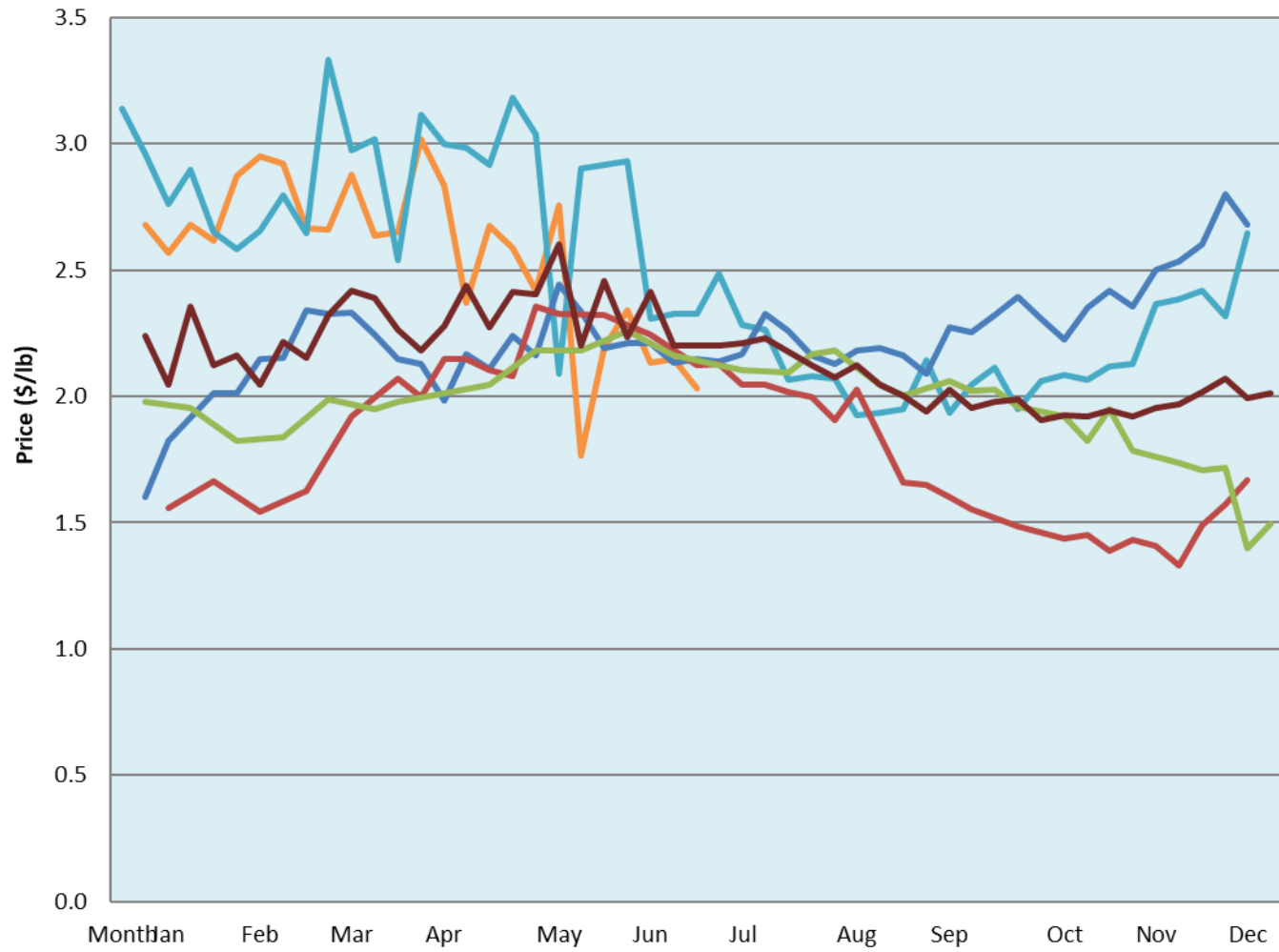
Date	Sale	Lambs (\$/lb)			Lambs (\$/lb)			Lambs (\$/lb)			Sheep(\$/lb): Bred ewes \$/hd		Total Head			
		Weight (lbs)	Head	low - high	Weight (lbs)	Head	low - high	Weight (lbs)	Head	low - high	low - high					
27-Jun-22	Beaver Hill www.beaverhillauctions.com	0-54: wool	-	1.60 - 2.30	70-85: wool	-	2.00 - 2.45	86-105:wool	-	2.00 - 2.62	Ewes: wool	0.85 - 1.81	1249			
		0-54: hair	-	1.50 - 2.00				86-105:hair			-	1.80 - 2.35		Ewes: hair	0.95 - 1.85	
		55-69: wool	-	1.90 - 2.35				106+:wool			-	2.00 - 2.55		Rams: wool	1.10 - 2.00	
		55-69: hair	-	1.80 - 2.20	70-85: hair	-	1.80 - 2.25	106+:hair	-	0.95 - 2.10	Rams: hair	1.13 - 2.10		Bred Ewes	0.00 - 0.00	
			-												Ewe&Lamb(s)	0.00 - 0.00
			-													
No sale this week	VJV Westlock www.vjvauction.com	0-69: wool	-	- - -	70-85: wool	-	- - -	86-105: wool	-	- - -	Ewes: wool	- - -	-			
			-					86-105: hair			-	- - -		Ewes: hair	- - -	
			-					106+: wool			-	- - -		Rams: wool	- - -	
		0-69: hair	-	- - -	70-85: hair	-	- - -	106+: hair	-	- - -	Rams: hair	- - -		Bred Ewes:wool	- - -	
			-												Ewe&Lamb:hair	- - -
			-													
28-Jun-22	Olds Auction www.oldsauktion.com	30-50	-	1.94 - 2.40	70-80	-	2.01 - 2.27	90-100	-	1.77 - 2.00	Ewes	0.83 - 1.18	339			
		50-60	-	1.94 - 2.41	80-90	-	1.61 - 2.14	100-110	-	1.81 - 1.96	Rams	0.89 - 1.39				
		60-70	-	2.02 - 2.30				110+	-	1.8 - 1.96	Bred Ewes	- - -		(incl.goats)		
25-Jun-22	Picture Butte www.picturebutteauction.ca							Feeder	-	1.39 - 2.24	Slaughter Ewes	0.50 - 0.97	-			
								Slaughter	-	1.82 - 2.07	Feeder Ewes	- - -				
											Ewe&lamb(s)	- - -				
											Bred ewes	- - -				
											Rams	0.89 - 1.39				

Ontario Live Animal Markets

27-Jun-22	OSI www.ontariosheep.org	0-50	77	2.68 - 3.25	65-80	752	2.55 - 2.91	95-110	291	2.54 - 2.83	Sheep	1.17 - 2.10	2531
		50-64	348	2.7 - 3.15	80-95	336	2.60 - 2.89	110+	143	2.625 - 2.66			
28-Jun-22	OLEX www.ontariosheep.org	0-50	234	2.75 - 3.65	65-79	802	3.00 - 3.43	95-109	975	3.00 - 3.35	Sheep	1.15 - 1.90	4431
		50-64	524	2.65 - 3.08	80-94	1109	3.10 - 3.38	110+	131	2.45 - 2.93			
27-Jun-22	Embrun www.ontariosheep.org	0-50	79	1.20 - 2.20	65-79	509	2.6 - 3.00	95-109	99	3.4 - 3.65	Sheep	0.62 - 1.29	1400
		50-64	197	1.85 - 2.90	80-94	339	2.95 - 3.55	110+	105	3.3 - 3.60			
23-Jun-22	Brussels www.ontariosheep.org	0-50	14	2.425 - 2.98	65-79	93	2.675 - 2.88	95-109	128	2.675 - 2.78	Sheep	1.20 - 2.03	628
		50-64	90	2.7 - 2.88	80-94	182	2.65 - 2.81	110+	25	2.35 - 2.60			

Alberta Lamb Producers does not endorse individual markets or verify prices provided.

Trends* in auction price for heavy lambs in Alberta



— 2022 — 2021 — 2020 — 2019 — 2018 — 5 yr ave

*Due to differences among auctions, prices are reported as 'trends' rather than averages.
 This graph is updated on weeks with two or more markets reporting prices.