

Alberta Live Animal Markets: Visit individual market websites for more information about applicable auction fees and upcoming sales.

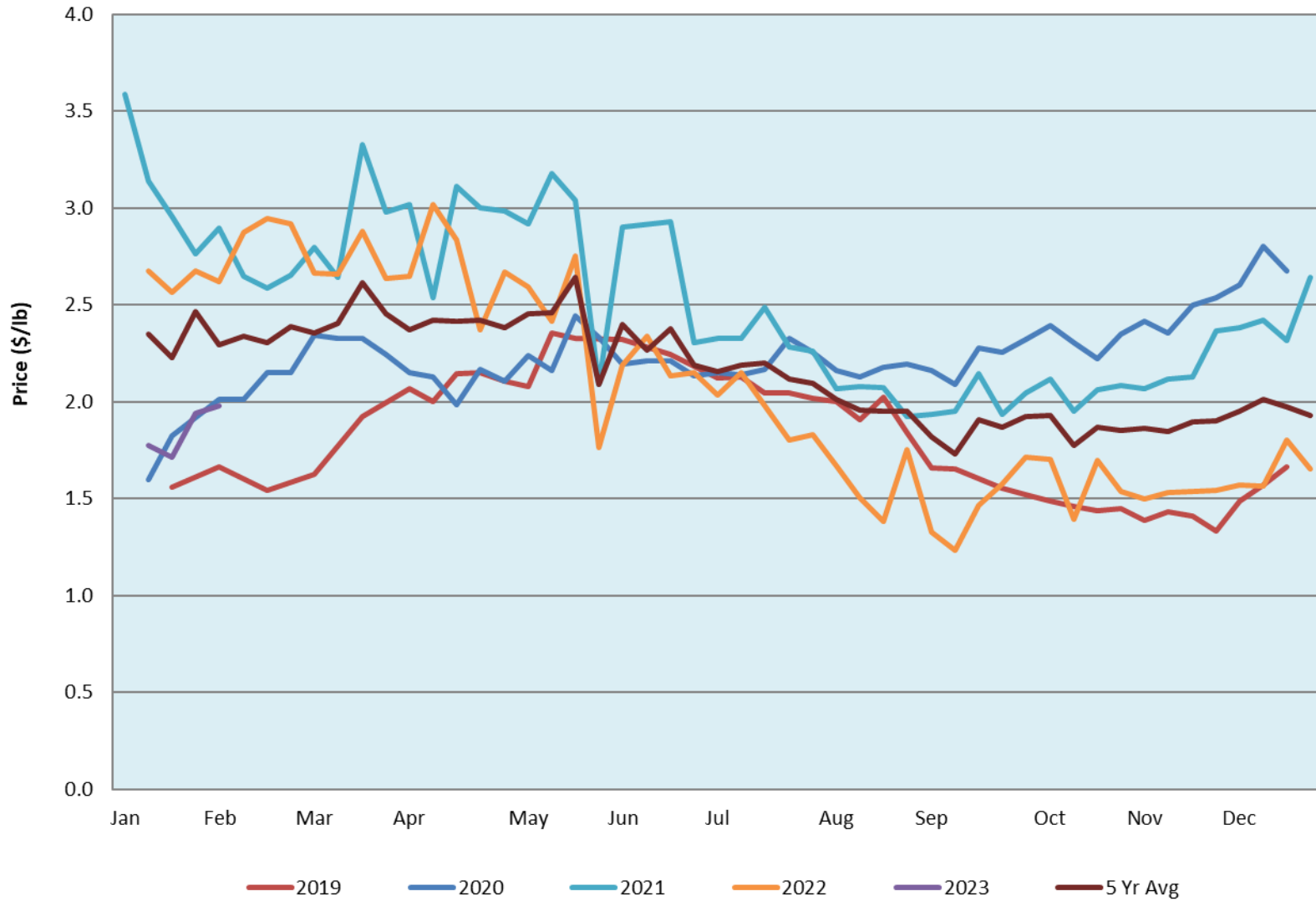
Date	Sale	Lambs (\$/lb)			Lambs (\$/lb)			Lambs (\$/lb)			Sheep(\$/lb): Bred ewes \$/hd		Total Head		
		Weight (lbs)	Head	low - high	Weight (lbs)	Head	low - high	Weight (lbs)	Head	low - high	low - high				
30-Jan-23	Beaver Hill www.beaverhillauctions.com	0-54: wool	-	1.90 - 2.36	70-85: wool	-	1.90 - 2.31	86-105:wool	-	1.90 - 2.26	Ewes: wool	1.08 - 1.59	1617		
		0-54: hair	-	1.60 - 2.26				86-105:hair			-	1.80 - 2.05		Rams: wool	1.00 - 1.66
		55-69: wool	-	1.90 - 2.35	70-85: hair	-	1.80 - 2.25	106+:wool	-	1.75 - 2.05	Rams: hair	1.00 - 1.37			
		55-69: hair	-	1.80 - 2.23				106+:hair			-	0.97 - 1.91		Bred Ewes	1.85 - 4.60
			-								-			Ewe&Lamb(s)	0.00 - 0.00
No sale this week	VJV Westlock www.vjvauction.com	0-69: wool	-	- - -	70-85: wool	-	- - -	86-105: wool	-	- - -	Ewes: wool	- - -	-		
			-			-		86-105: hair	-	- - -	Ewes: hair	- - -			
			-			-			106+: wool	-	- - -	Rams: wool		- - -	
		0-69: hair	-	- - -	70-85: hair	-	- - -	106+: hair	-	- - -	Rams: hair	- - -			
			-			-				-	- - -	Bred Ewes:wool		- - -	
Information unavailable	Olds Auction www.oldsauktion.com	30-50	-	- - -	70-80	-	- - -	90-100	-	- - -	Ewes	- - -	-		
		50-60	-	- - -	80-90	-	- - -	100-110	-	- - -	Rams	- - -			
		60-70	-	- - -				110+	-	- - -	Bred Ewes	- - -			
28-Jan-23	Picture Butte www.picturebutteauction.ca							Feeder	-	- - -	Slaughter Ewes	1.02 - 1.15	-		
								Slaughter	-	2.04 - 2.08	Feeder Ewes	- - -			
											Ewe&lamb(s)	- - -			
											Bred ewes	- - -			
										Rams	1.11 - 1.56				

Ontario Live Animal Markets

30-Jan-23	OSI www.ontariosheep.org	0-50	15	1.00 - 2.58	65-80	351	2.48 - 2.74	95-110	80	2.29 - 2.50	Sheep	1.20 - 2.00	1343
		50-64	68	2.95 - 3.00	80-95	324	2.20 - 2.60	110+	64	2.04 - 2.18			
31-Jan-23	OLEX www.ontariosheep.org	0-50	13	2.35 - 3.85	65-79	227	2.68 - 3.35	95-109	643	2.28 - 2.48	Sheep	0.85 - 1.85	1901
		50-64	200	2.73 - 3.35	80-94	231	2.21 - 2.90	110+	66	1.80 - 2.20			
30-Jan-23	Embrun www.ontariosheep.org	0-50	0	0.00 - 0.00	65-79	49	3.38 - 3.78	95-109	51	2.96 - 3.20	Sheep	1.00 - 1.42	225
		50-64	23	3.05 - 3.75	80-94	53	3.1 - 3.78	110+	25	2.35 - 2.90			
26-Jan-23	Brussels www.ontariosheep.org	0-50	2	2.6 - 2.60	65-79	33	2.525 - 2.80	95-109	73	1.79 - 2.01	Sheep	1.00 - 1.70	263
		50-64	9	3.2 - 3.20	80-94	63	1.825 - 2.28	110+	35	1.7 - 1.90			

Alberta Lamb Producers does not endorse individual markets or verify prices provided.

Trends* in Auction Price for Heavy Lambs in Alberta



*Due to differences among auctions, prices are reported as 'trends' rather than averages.
This graph is updated on weeks with two or more markets reporting prices.