

**Alberta Live Animal Markets: Visit individual market websites for more information about applicable auction fees and upcoming sales.**

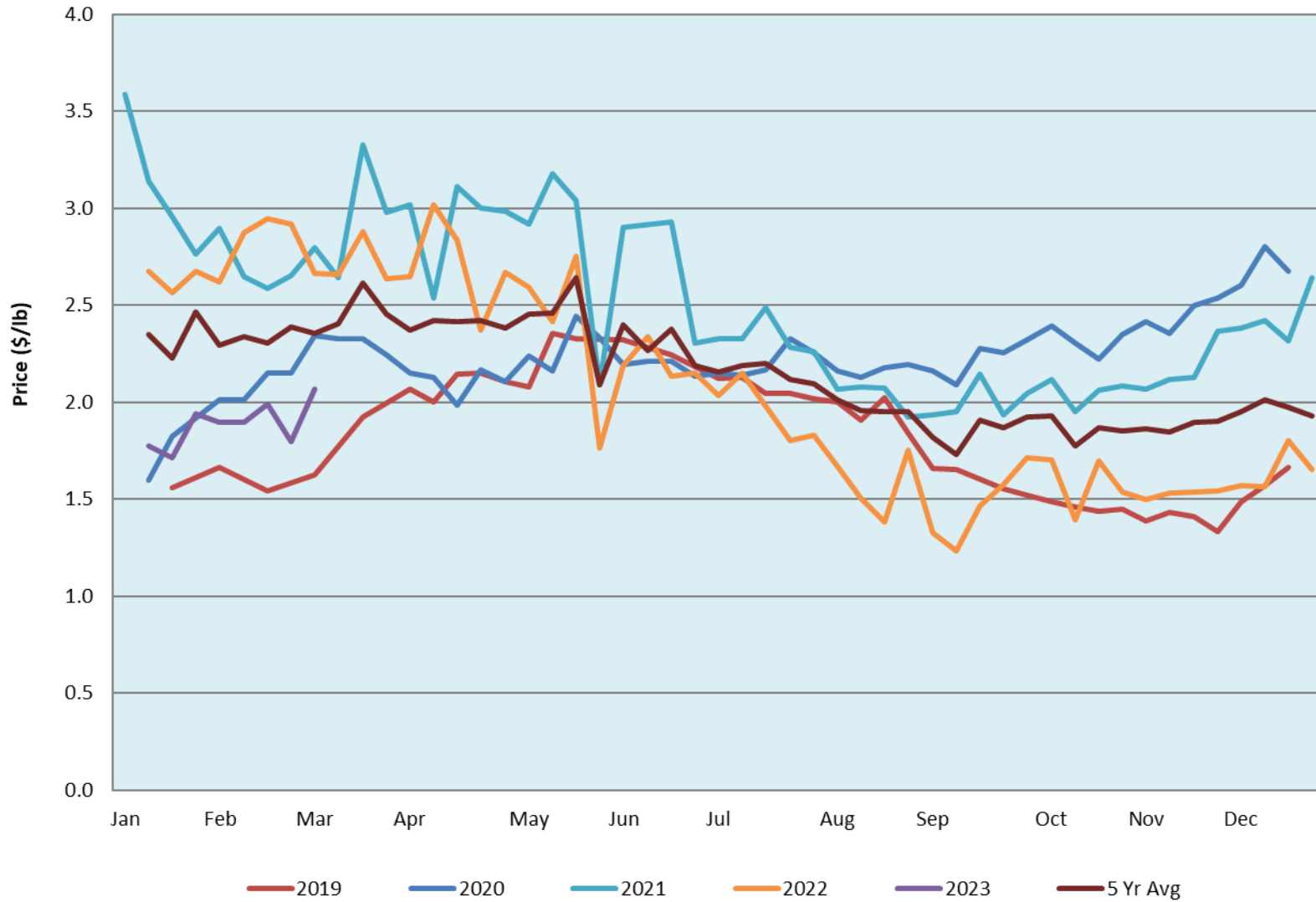
Date	Sale	Lambs (\$/lb)			Lambs (\$/lb)			Lambs (\$/lb)			Sheep(\$/lb): Bred ewes \$/hd		Total Head		
		Weight (lbs)	Head	low - high	Weight (lbs)	Head	low - high	Weight (lbs)	Head	low - high	low - high				
27-Feb-23	Beaver Hill <a href="http://www.beaverhillauctions.com">www.beaverhillauctions.com</a>	0-54: wool	-	2.28 - 2.75	70-85: wool	-	2.20 - 2.63	86-105:wool	-	2.15 - 2.58	Ewes: wool	0.95 - 1.85	1623		
		0-54: hair	-	2.00 - 2.35				86-105:hair			-	2.18 - 2.45		Rams: wool	0.90 - 1.65
		55-69: wool	-	2.20 - 2.66				106+:wool			-	2.10 - 2.53		Rams: hair	1.08 - 1.70
		55-69: hair	-	2.30 - 2.65	70-85: hair	-	2.30 - 2.46	106+:hair	-	1.05 - 2.29	Bred Ewes	2.50 - 4.00			
											Ewe&Lamb(s)	0.00 - 0.00			
No sale this week	VJV Westlock <a href="http://www.vjvauction.com">www.vjvauction.com</a>	0-69: wool	-	- - -	70-85: wool	-	- - -	86-105: wool	-	- - -	Ewes: wool	- - -	-		
			-					86-105: hair	-	- - -	Ewes: hair	- - -			
			-						106+: wool	-	- - -	Rams: wool		- - -	
		0-69: hair	-	- - -	70-85: hair	-	- - -	106+: hair	-	- - -	Rams: hair	- - -			
			-								Bred Ewes:wool	- - -			
28-Feb-23	Olds Auction <a href="http://www.oldsauktion.com">www.oldsauktion.com</a>	30-50	-	2.5 - 2.81	70-80	-	2.7 - 2.98	90-100	-	1.66 - 1.81	Ewes	1.00 - 1.46	101 (incl.goats)		
		50-60	-	2.5 - 2.96	80-90	-	2.53 - 2.78	100-110	-	1.69 - 1.90	Rams	1.00 - 1.31			
		60-70	-	2.6 - 2.98				110+	-	1.7 - 1.95	Bred Ewes	- - -			
25-Feb-23	Picture Butte <a href="http://www.picturebutteauction.ca">www.picturebutteauction.ca</a>							Feeder	-	- - -	Slaughter Ewes	- - -	-		
								Slaughter	-	- - -	Feeder Ewes	- - -			
											Ewe&lamb(s)	- - -			
											Bred ewes	- - -			
										Rams	1.38 - 1.56				

**Ontario Live Animal Markets**

27-Feb-23	OSI <a href="http://www.ontariosheep.org">www.ontariosheep.org</a>	0-50	99	2.93 - 4.00	65-80	86	2.89 - 3.23	95-110	74	2.35 - 2.45	Sheep	1.39 - 2.48	866
		50-64	88	2.875 - 3.70	80-95	112	2.38 - 2.81	110+	36	2.25 - 2.36			
28-Feb-23	OLEX <a href="http://www.ontariosheep.org">www.ontariosheep.org</a>	0-50	54	3.25 - 4.45	65-79	471	2.75 - 3.35	95-109	558	2.35 - 2.75	Sheep	0.50 - 1.85	2250
		50-64	267	3.25 - 3.50	80-94	304	2.73 - 3.10	110+	327	2.05 - 2.48			
27-Feb-23	Embrun <a href="http://www.ontariosheep.org">www.ontariosheep.org</a>	0-50	0	0.00 - 0.00	65-79	155	2.8 - 3.45	95-109	42	2.1 - 2.60	Sheep	0.69 - 1.40	344
		50-64	22	2.60 - 3.00	80-94	82	2.35 - 2.95	110+	13	1.94 - 2.52			
16-Feb-23	Brussels <a href="http://www.ontariosheep.org">www.ontariosheep.org</a>	0-50	7	2.85 - 3.00	65-79	30	3.2 - 3.34	95-109	21	2.14 - 2.44	Sheep	1.15 - 1.88	180
		50-64	12	2.4 - 3.40	80-94	30	2.6 - 3.05	110+	44	1.9 - 2.30			

**Alberta Lamb Producers does not endorse individual markets or verify prices provided.**

### Trends\* in Auction Price for Heavy Lambs in Alberta



\*Due to differences among auctions, prices are reported as 'trends' rather than averages.  
This graph is updated on weeks with two or more markets reporting prices.