

**Alberta Live Animal Markets: Visit individual market websites for more information about applicable auction fees and upcoming sales.**

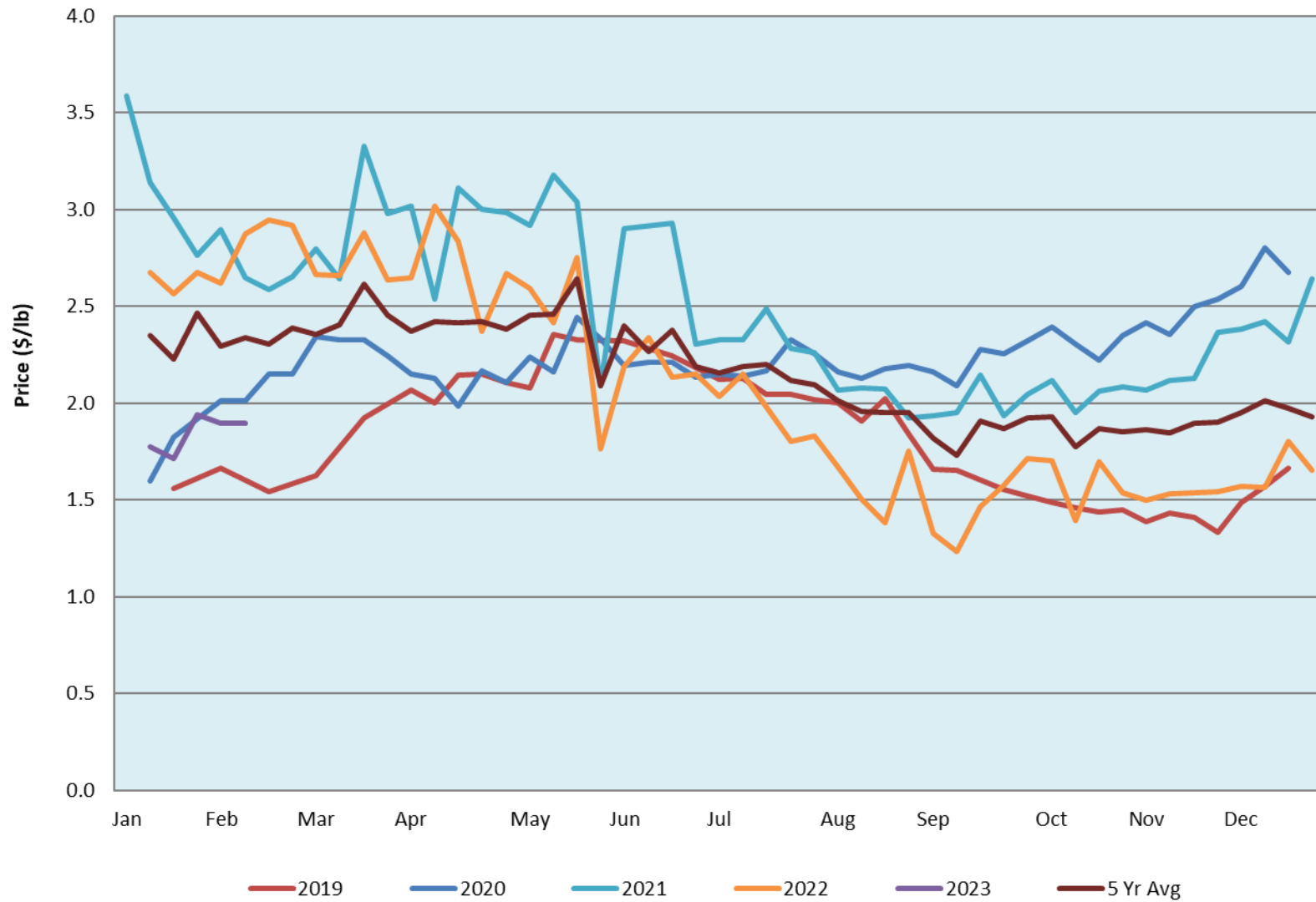
Date	Sale	Lambs (\$/lb)			Lambs (\$/lb)			Lambs (\$/lb)			Sheep(\$/lb): Bred ewes \$/hd		Total Head		
		Weight (lbs)	Head	low - high	Weight (lbs)	Head	low - high	Weight (lbs)	Head	low - high	low - high				
No sale this week	Beaver Hill <a href="http://www.beaverhillauctions.com">www.beaverhillauctions.com</a>	0-54: wool	-	0.00 - 0.00	70-85: wool	-	0.00 - 0.00	86-105:wool	-	0.00 - 0.00	Ewes: wool	0.00 - 0.00	0		
		0-54: hair	-	0.00 - 0.00				86-105:hair			-	0.00 - 0.00		Ewes: hair	0.00 - 0.00
		55-69: wool	-	0.00 - 0.00	70-85: hair	-	0.00 - 0.00	106+:wool	-	0.00 - 0.00	Rams: wool	0.00 - 0.00			
		55-69: hair	-	0.00 - 0.00				106+:hair			-	0.00 - 0.00		Rams: hair	0.00 - 0.00
			-								-			Bred Ewes	0.00 - 0.00
								-	0.00 - 0.00	Ewe&Lamb(s)	0.00 - 0.00				
No sale this week	VJV Westlock <a href="http://www.vjvauction.com">www.vjvauction.com</a>	0-69: wool	-	- - -	70-85: wool	-	- - -	86-105: wool	-	- - -	Ewes: wool	- - -	-		
			-					86-105: hair			-	- - -		Ewes: hair	- - -
			-		70-85: hair	-	- - -	106+: wool	-	- - -	Rams: wool	- - -			
		0-69: hair	-	- - -				106+: hair			-	- - -		Rams: hair	- - -
			-								-			Bred Ewes:wool	- - -
								-	- - -	Ewe&Lamb:hair	- - -				
07-Feb-23	Olds Auction <a href="http://www.oldsauktion.com">www.oldsauktion.com</a>	30-50	-	2.5 - 3.01	70-80	-	2.5 - 3.15	90-100	-	1.75 - 2.04	Ewes	0.91 - 1.14	280  (incl.goats)		
		50-60	-	2.5 - 3.03	80-90	-	2.3 - 2.63	100-110	-	1.73 - 2.00	Rams	1.17 - 1.85			
		60-70	-	2.6 - 3.10				110+	-	1.7 - 1.95	Bred Ewes	- - -			
04-Feb-23	Picture Butte <a href="http://www.picturebutteauction.ca">www.picturebutteauction.ca</a>							Feeder	-	2.11 - 2.41	Slaughter Ewes	1.03 - 1.41	-		
								Slaughter	-	1.86 - 2.07	Feeder Ewes	- - -			
											Ewe&lamb(s)	- - -			
											Bred ewes	- - -			
										Rams	1.51 - 1.59				

**Ontario Live Animal Markets**

06-Feb-23	OSI <a href="http://www.ontariosheep.org">www.ontariosheep.org</a>	0-50	11	1.75 - 1.75	65-80	279	2.60 - 3.15	95-110	36	0.0234 - 2.51	Sheep	1.10 - 1.95	981
		50-64	37	1.675 - 3.25	80-95	153	0.02 - 2.80	110+	2	1.375 - 2.68			
07-Feb-23	OLEX <a href="http://www.ontariosheep.org">www.ontariosheep.org</a>	0-50	10	1.85 - 3.35	65-79	248	2.95 - 3.43	95-109	473	2.30 - 2.65	Sheep	1.10 - 2.10	1689
		50-64	96	3.20 - 3.48	80-94	300	2.35 - 3.13	110+	166	1.90 - 2.43			
06-Feb-23	Embrun <a href="http://www.ontariosheep.org">www.ontariosheep.org</a>	0-50	1	2.75 - 2.75	65-79	155	2.98 - 3.50	95-109	53	2.22 - 2.90	Sheep	0.92 - 1.40	369
		50-64	17	3.10 - 3.45	80-94	83	2.45 - 3.02	110+	24	1.95 - 2.22			
02-Feb-23	Brussels <a href="http://www.ontariosheep.org">www.ontariosheep.org</a>	0-50	5	2.45 - 2.65	65-79	99	2.35 - 2.68	95-109	48	2 - 2.19	Sheep	1.25 - 2.05	388
		50-64	27	2.79 - 3.20	80-94	134	2.3 - 2.75	110+	1	2.15 - 2.15			

**Alberta Lamb Producers does not endorse individual markets or verify prices provided.**

## Trends\* in Auction Price for Heavy Lambs in Alberta



\*Due to differences among auctions, prices are reported as 'trends' rather than averages.  
This graph is updated on weeks with two or more markets reporting prices.