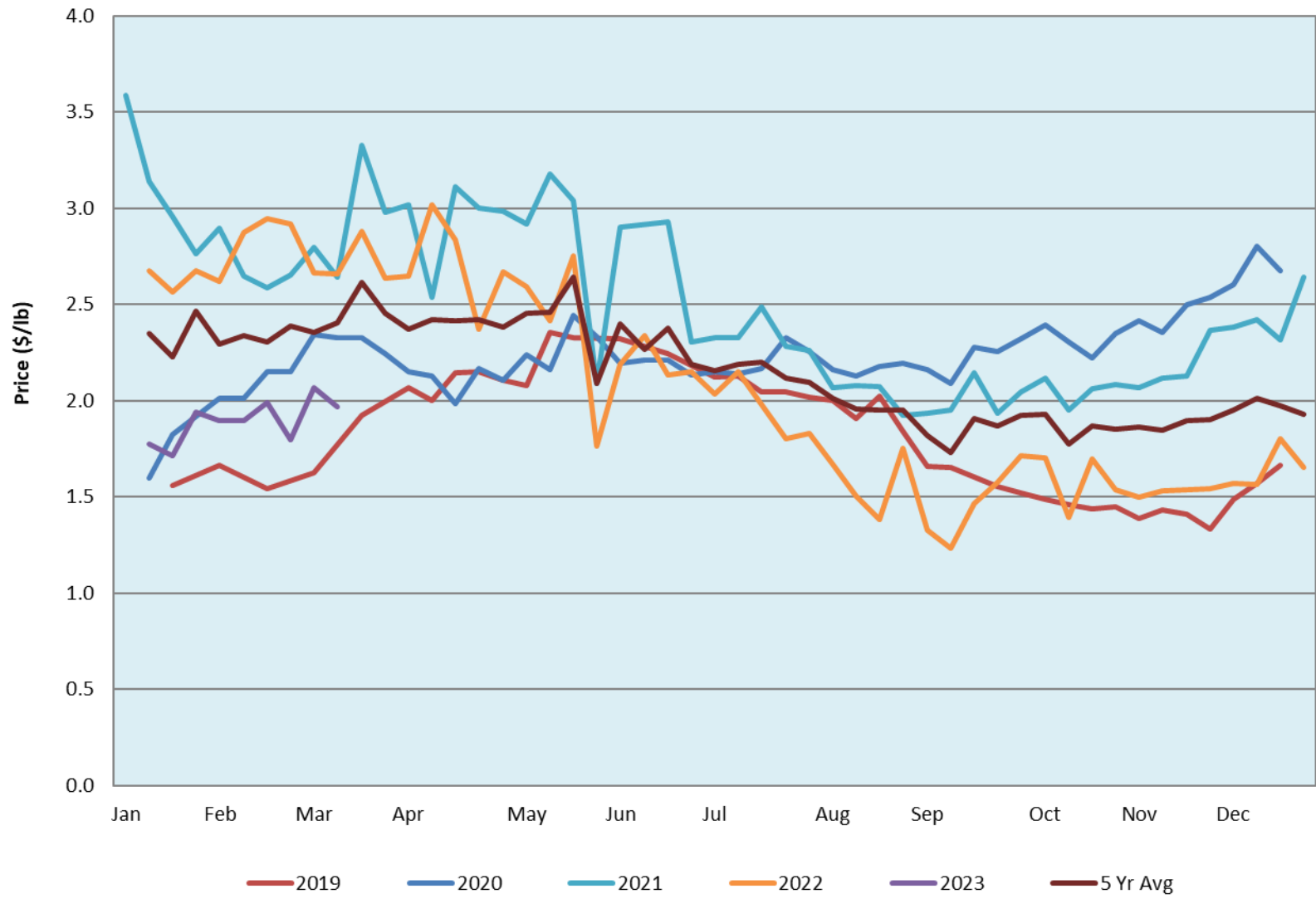


## Trends\* in Auction Price for Heavy Lambs in Alberta



\*Due to differences among auctions, prices are reported as 'trends' rather than averages.  
 This graph is updated on weeks with two or more markets reporting prices.

**Alberta Live Animal Markets: Visit individual market websites for more information about applicable auction fees and upcoming sales.**

Date	Sale	Lambs (\$/lb)			Lambs (\$/lb)			Lambs (\$/lb)			Sheep(\$/lb): Bred ewes \$/hd		Total Head		
		Weight (lbs)	Head	low - high	Weight (lbs)	Head	low - high	Weight (lbs)	Head	low - high	low - high	low - high			
No sale this week	Beaver Hill <a href="http://www.beaverhillauctions.com">www.beaverhillauctions.com</a>	0-54: wool	-	0.00 - 0.00	70-85: wool	-	0.00 - 0.00	86-105:wool	-	0.00 - 0.00	Ewes: wool	0.00 - 0.00	0		
		0-54: hair	-	0.00 - 0.00				86-105:hair			-	0.00 - 0.00		Ewes: hair	0.00 - 0.00
		55-69: wool	-	0.00 - 0.00	70-85: hair	-	0.00 - 0.00	106+:wool	-	0.00 - 0.00	Rams: wool	0.00 - 0.00			
		55-69: hair	-	0.00 - 0.00				106+:hair			-	0.00 - 0.00		Rams: hair	0.00 - 0.00
			-								-			Bred Ewes	0.00 - 0.00
								-	0.00 - 0.00	Ewe&Lamb(s)	0.00 - 0.00				
No sale this week	VJV Westlock <a href="http://www.vjvauction.com">www.vjvauction.com</a>	0-69: wool	-	- - -	70-85: wool	-	- - -	86-105: wool	-	- - -	Ewes: wool	- - -	-		
			-					86-105: hair			-	- - -		Ewes: hair	- - -
			-		70-85: hair	-	- - -	106+: wool	-	- - -	Rams: wool	- - -			
		0-69: hair	-	- - -				106+: hair			-	- - -		Rams: hair	- - -
			-								-			Bred Ewes:wool	- - -
								-	- - -	Ewe&Lamb:hair	- - -				
Information unavailable	Olds Auction <a href="http://www.oldsauktion.com">www.oldsauktion.com</a>	30-50	-	- - -	70-80	-	- - -	90-100	-	- - -	Ewes	- - -	-		
		50-60	-	- - -	80-90	-	- - -	100-110	-	- - -	Rams	- - -			
		60-70	-	- - -				110+	-	- - -	Bred Ewes	- - -		(incl.goats)	
04-Mar-23	Picture Butte <a href="http://www.picturebutteauction.ca">www.picturebutteauction.ca</a>							Feeder	-	2.32 - 2.45	Slaughter Ewes	1.00 - 1.26	-		
								Slaughter	-	1.93 - 2.01	Feeder Ewes	- - -			
											Ewe&lamb(s)	- - -			
											Bred ewes	- - -			
										Rams	1.35 - 1.42				

**Ontario Live Animal Markets**

06-Mar-23	OSI <a href="http://www.ontariosheep.org">www.ontariosheep.org</a>	0-50	1	3.10 - 3.10	65-80	67	2.33 - 3.50	95-110	141	2.2 - 2.45	Sheep	1.35 - 1.99	987
		50-64	10	2.675 - 3.55	80-95	106	2.18 - 2.77	110+	37	2.05 - 2.30			
07-Mar-23	OLEX <a href="http://www.ontariosheep.org">www.ontariosheep.org</a>	0-50	23	3.45 - 4.15	65-79	388	3.20 - 3.65	95-109	758	2.55 - 3.33	Sheep	1.10 - 2.40	2347
		50-64	136	3.03 - 3.60	80-94	431	2.88 - 3.53	110+	244	2.00 - 2.60			
06-Mar-23	Embrun <a href="http://www.ontariosheep.org">www.ontariosheep.org</a>	0-50	1	3.30 - 3.30	65-79	122	2.9 - 3.40	95-109	17	2.26 - 2.72	Sheep	0.57 - 1.09	291
		50-64	19	2.35 - 3.35	80-94	64	2.72 - 3.02	110+	19	2.05 - 2.27			
02-Mar-23	Brussels <a href="http://www.ontariosheep.org">www.ontariosheep.org</a>	0-50	13	3.45 - 3.45	65-79	97	3.3 - 3.63	95-109	110	2.31 - 2.45	Sheep	0.75 - 2.25	588
		50-64	59	3.25 - 3.45	80-94	142	2.675 - 3.23	110+	60	2.1 - 2.28			

**Alberta Lamb Producers does not endorse individual markets or verify prices provided.**