

Alberta Live Animal Markets: Visit individual market websites for more information about applicable auction fees and upcoming sales.

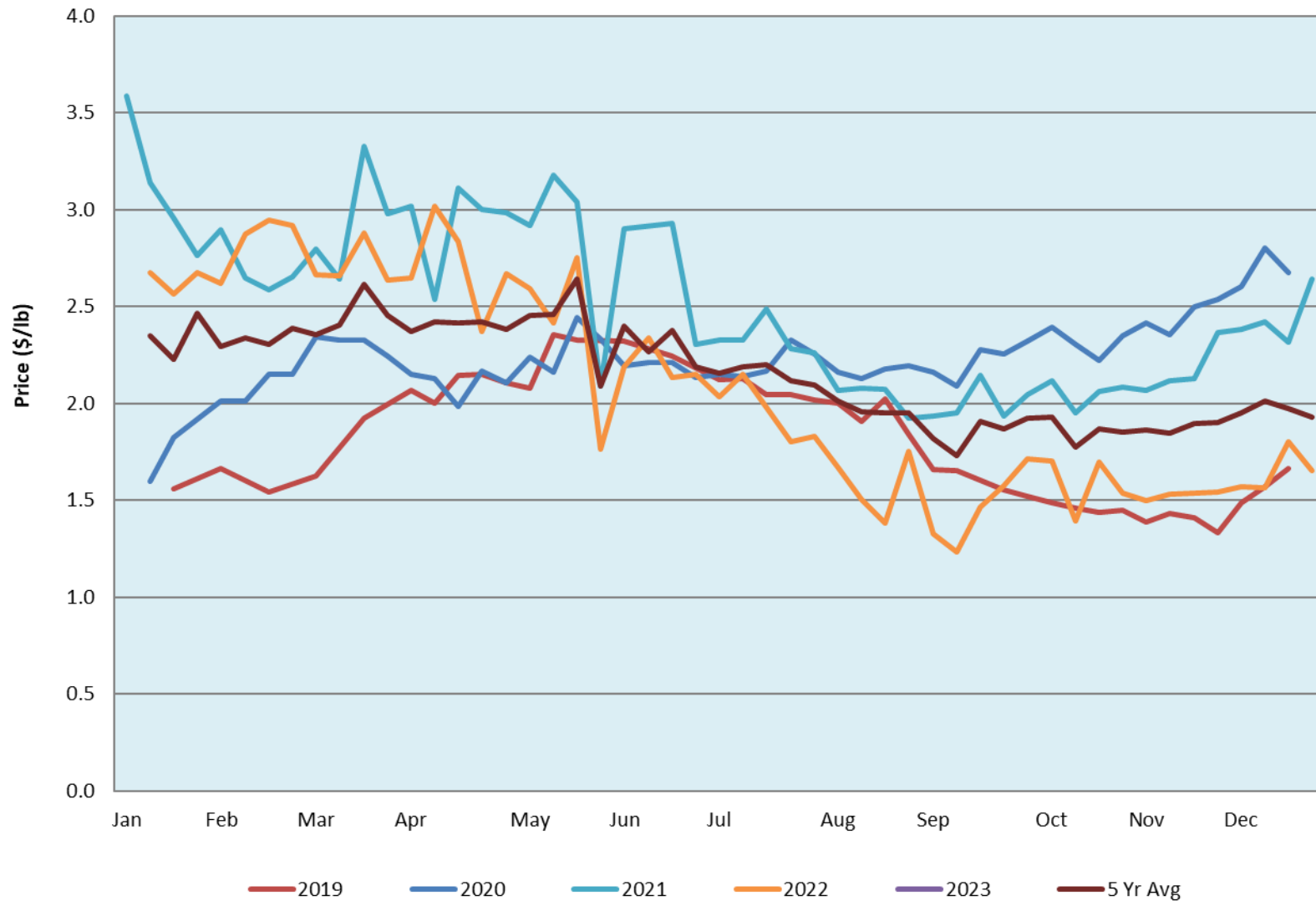
Date	Sale	Lambs (\$/lb)			Lambs (\$/lb)			Lambs (\$/lb)			Sheep(\$/lb): Bred ewes \$/hd		Total Head		
		Weight (lbs)	Head	low - high	Weight (lbs)	Head	low - high	Weight (lbs)	Head	low - high	low - high				
09-Jan-23	Beaver Hill www.beaverhillauctions.com	0-54: wool	-	2.00 - 2.40	70-85: wool	-	2.30 - 2.60	86-105:wool	-	2.15 - 2.43	Ewes: wool	1.08 - 2.10	1455		
		0-54: hair	-	1.75 - 2.26				86-105:hair			-	2.15 - 2.45		Rams: wool	1.25 - 1.50
		55-69: wool	-	2.15 - 2.83	70-85: hair	-	2.20 - 2.35	106+:wool	-	1.80 - 2.34	Rams: hair	1.25 - 2.00			
		55-69: hair	-	2.00 - 2.36				106+:hair			-	1.25 - 2.21		Bred Ewes	1.95 - 2.50
			-								-			Ewe&Lamb(s)	0.00 - 0.00
No sale this week	VJV Westlock www.vjvauction.com	0-69: wool	-	- - -	70-85: wool	-	- - -	86-105: wool	-	- - -	Ewes: wool	- - -	-		
			-					86-105: hair	-	- - -	Ewes: hair	- - -			
			-						106+: wool	-	- - -	Rams: wool		- - -	
		0-69: hair	-	- - -	70-85: hair	-	- - -	106+: wool	-	- - -	Rams: hair	- - -			
			-					106+: hair	-	- - -	Bred Ewes:wool	- - -			
										Ewe&Lamb:hair	- - -				
Information unavailable	Olds Auction www.oldsauktion.com	30-50	-	- - -	70-80	-	- - -	90-100	-	- - -	Ewes	- - -	-		
		50-60	-	- - -	80-90	-	- - -	100-110	-	- - -	Rams	- - -			
		60-70	-	- - -				110+	-	- - -	Bred Ewes	- - -			
Information unavailable	Picture Butte www.picturebutteauction.ca							Feeder	-	- - -	Slaughter Ewes	- - -	-		
								Slaughter	-	- - -	Feeder Ewes	- - -			
											Ewe&lamb(s)	- - -			
											Bred ewes	- - -			
											Rams	- - -			

Ontario Live Animal Markets

09-Jan-23	OSI www.ontariosheep.org	0-50	3	2.25 - 3.05	65-80	142	2.68 - 3.25	95-110	116	2.37 - 2.48	Sheep	1.60 - 2.35	1172
		50-64	36	2.95 - 3.23	80-95	169	2.53 - 2.68	110+	58	2 - 2.48			
10-Jan-23	OLEX www.ontariosheep.org	0-50	33	3.60 - 4.15	65-79	808	2.60 - 3.00	95-109	575	2.35 - 2.60	Sheep	1.28 - 1.95	3002
		50-64	266	3.15 - 3.80	80-94	620	2.40 - 2.80	110+	289	1.80 - 2.38			
09-Jan-23	Embrun www.ontariosheep.org	0-50	13	2.05 - 3.40	65-79	103	2.4 - 3.04	95-109	38	1.8 - 2.30	Sheep	1.05 - 1.40	390
		50-64	23	2.50 - 2.92	80-94	107	2.28 - 2.88	110+	57	1.59 - 2.00			
05-Jan-23	Brussels www.ontariosheep.org	0-50	6	4.7 - 4.70	65-79	89	3.25 - 4.10	95-109	56	2.45 - 2.70	Sheep	1.58 - 2.73	458
		50-64	30	4.05 - 4.55	80-94	117	2.75 - 3.28	110+	28	1.675 - 2.45			

Alberta Lamb Producers does not endorse individual markets or verify prices provided.

Trends* in Auction Price for Heavy Lambs in Alberta



*Due to differences among auctions, prices are reported as 'trends' rather than averages.
 This graph is updated on weeks with two or more markets reporting prices.