

**Alberta Live Animal Markets: Visit individual market websites for more information about applicable auction fees and upcoming sales.**

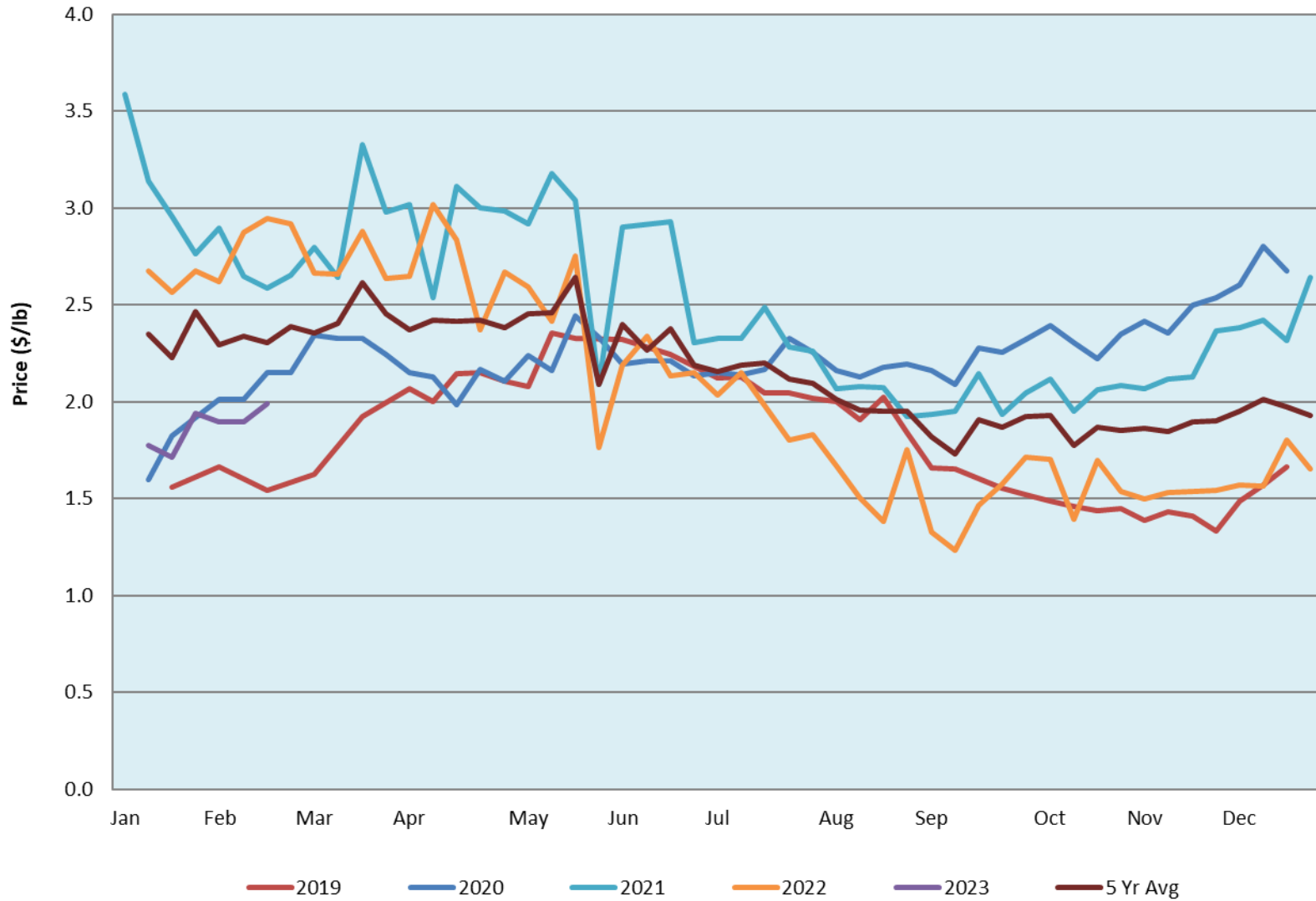
Date	Sale	Lambs (\$/lb)			Lambs (\$/lb)			Lambs (\$/lb)			Sheep(\$/lb): Bred ewes \$/hd		Total Head		
		Weight (lbs)	Head	low - high	Weight (lbs)	Head	low - high	Weight (lbs)	Head	low - high	low - high				
13-Feb-23	Beaver Hill <a href="http://www.beaverhillauctions.com">www.beaverhillauctions.com</a>	0-54: wool	-	2.10 - 2.39	70-85: wool	-	2.00 - 2.50	86-105:wool	-	2.05 - 2.46	Ewes: wool	0.95 - 1.70	1655		
		0-54: hair	-	1.80 - 2.26				86-105:hair			-	2.05 - 2.35		Rams: wool	1.00 - 1.42
		55-69: wool	-	2.20 - 2.52	70-85: hair	-	2.10 - 2.46	106+:wool	-	1.90 - 2.45	Rams: hair	1.20 - 2.00			
		55-69: hair	-	1.90 - 2.45				106+:hair			-	1.05 - 2.19		Bred Ewes	1.90 - 2.60
			-								-			Ewe&Lamb(s)	0.00 - 0.00
No sale this week	VJV Westlock <a href="http://www.vjvauction.com">www.vjvauction.com</a>	0-69: wool	-	- - -	70-85: wool	-	- - -	86-105: wool	-	- - -	Ewes: wool	- - -	-		
			-			-		86-105: hair	-	- - -	Ewes: hair	- - -			
			-			-			106+: wool	-	- - -	Rams: wool		- - -	
		0-69: hair	-	- - -	70-85: hair	-	- - -	106+: hair	-	- - -	Rams: hair	- - -			
			-			-				-	- - -	Bred Ewes:wool		- - -	
14-Feb-23	Olds Auction <a href="http://www.oldsauktion.com">www.oldsauktion.com</a>	30-50	-	2.5 - 2.81	70-80	-	2.7 - 2.98	90-100	-	1.66 - 1.81	Ewes	0.90 - 1.65	254  (incl.goats)		
		50-60	-	2.5 - 2.96	80-90	-	2.53 - 2.78	100-110	-	1.69 - 1.90	Rams	1.11 - 1.65			
		60-70	-	2.6 - 2.98				110+	-	1.7 - 1.95	Bred Ewes	- - -			
11-Feb-23	Picture Butte <a href="http://www.picturebutteauction.ca">www.picturebutteauction.ca</a>							Feeder	-	2.12 - 2.37	Slaughter Ewes	0.95 - 1.25	-		
								Slaughter	-	1.83 - 2.10	Feeder Ewes	- - -			
											Ewe&lamb(s)	- - -			
											Bred ewes	- - -			
										Rams	1.25 - 1.39				

**Ontario Live Animal Markets**

13-Feb-23	OSI <a href="http://www.ontariosheep.org">www.ontariosheep.org</a>	0-50	0	0.00 - 0.00	65-80	52	2.10 - 3.45	95-110	95	2.425 - 2.70	Sheep	0.80 - 1.58	876
		50-64	86	2.75 - 3.35	80-95	92	2.85 - 3.18	110+	102	2.11 - 2.58			
14-Feb-23	OLEX <a href="http://www.ontariosheep.org">www.ontariosheep.org</a>	0-50	24	3.55 - 3.90	65-79	508	2.70 - 3.13	95-109	728	2.35 - 2.68	Sheep	0.38 - 1.65	2511
		50-64	199	3.10 - 3.50	80-94	456	2.45 - 2.70	110+	301	2.15 - 2.28			
13-Feb-23	Embrun <a href="http://www.ontariosheep.org">www.ontariosheep.org</a>	0-50	11	2.65 - 3.10	65-79	130	2.6 - 3.12	95-109	47	2.32 - 2.65	Sheep	0.80 - 1.45	408
		50-64	49	2.40 - 3.20	80-94	88	2.5 - 3.10	110+	45	1.75 - 2.45			
09-Feb-23	Brussels <a href="http://www.ontariosheep.org">www.ontariosheep.org</a>	0-50	0	0 - 0.00	65-79	32	2.825 - 3.23	95-109	83	2.175 - 2.33	Sheep	0.85 - 1.88	331
		50-64	22	3.25 - 3.30	80-94	75	2.45 - 3.18	110+	56	1 - 2.05			

**Alberta Lamb Producers does not endorse individual markets or verify prices provided.**

## Trends\* in Auction Price for Heavy Lambs in Alberta



\*Due to differences among auctions, prices are reported as 'trends' rather than averages.  
 This graph is updated on weeks with two or more markets reporting prices.