

Alberta Live Animal Markets: Visit individual market websites for more information about applicable auction fees and upcoming sales

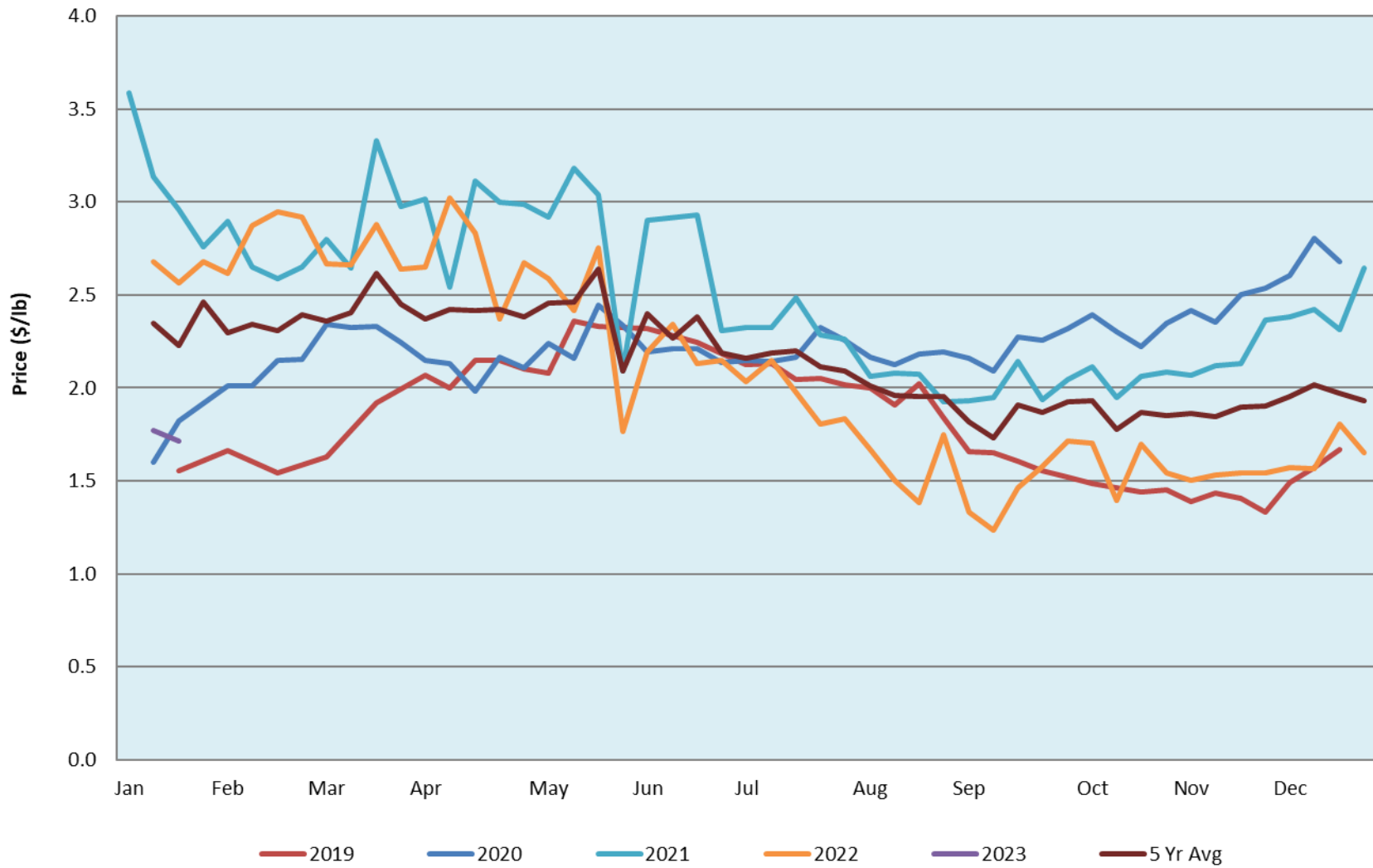
Date	Sale	Lambs (\$/lb)			Lambs (\$/lb)			Lambs (\$/lb)			Sheep(\$/lb): Bred ewes \$/hd		Total Head		
		Weight (lbs)	Head	low - high	Weight (lbs)	Head	low - high	Weight (lbs)	Head	low - high	low - high				
No sale this week	Beaver Hill www.beaverhillauctions.com	0-54: wool	-	0.00 - 0.00	70-85: wool	-	0.00 - 0.00	86-105:wool	-	0.00 - 0.00	Ewes: wool	0.00 - 0.00	0		
		0-54: hair	-	0.00 - 0.00				86-105:hair			-	0.00 - 0.00		Ewes: hair	0.00 - 0.00
		55-69: wool	-	0.00 - 0.00	70-85: hair	-	0.00 - 0.00	106+:wool	-	0.00 - 0.00	Rams: wool	0.00 - 0.00			
		55-69: hair	-	0.00 - 0.00				106+:hair			-	0.00 - 0.00		Rams: hair	0.00 - 0.00
			-								-			Bred Ewes	0.00 - 0.00
								-		Ewe&Lamb(s)	0.00 - 0.00				
No sale this week	VJV Westlock www.vjvauction.com	0-69: wool	-	- - -	70-85: wool	-	- - -	86-105: wool	-	- - -	Ewes: wool	- - -	-		
			-					86-105: hair			-	- - -		Ewes: hair	- - -
			-					106+: wool			-	- - -		Rams: wool	- - -
		0-69: hair	-	- - -	70-85: hair	-	- - -	106+: hair	-	- - -	Rams: hair	- - -			
			-						-	- - -	Bred Ewes:wool	- - -			
			-						-	- - -	Ewe&Lamb:hair	- - -			
17-Jan-23	Olds Auction www.oldsauktion.com	30-50	-	2 - 2.61	70-80	-	2.19 - 2.88	90-100	-	2 - 2.40	Ewes	1.08 - 1.41	126 (incl.goats)		
		50-60	-	2.08 - 2.77	80-90	-	2.1 - 2.69	100-110	-	1.9 - 2.14	Rams	1.04 - 1.16			
		60-70	-	2.1 - 2.94				110+	-	1.34 - 1.61	Bred Ewes	- - -			
14-Jan-23	Picture Butte www.picturebutteauction.ca							Feeder	-	2.01 - 2.45	Slaughter Ewes	1.12 - 1.43	-		
								Slaughter	-	1.87 - 2.03	Feeder Ewes	- - -			
											Ewe&lamb(s)	- - -			
											Bred ewes	- - -			
												Rams		1.50 - 1.75	

Ontario Live Animal Markets

16-Jan-23	OSI www.ontariosheep.org	0-50	16	2.45 - 3.05	65-80	138	2.53 - 3.28	95-110	100	2.3 - 2.50	Sheep	1.75 - 2.45	720
		50-64	79	2.65 - 3.25	80-95	206	2.63 - 2.95	110+	0	0 - 0.00			
17-Jan-23	OLEX www.ontariosheep.org	0-50	25	3.00 - 3.90	65-79	410	2.70 - 3.18	95-109	645	2.45 - 2.71	Sheep	1.40 - 2.10	2569
		50-64	354	2.80 - 3.28	80-94	317	2.45 - 2.71	110+	321	2.00 - 2.38			
16-Jan-23	Embrun www.ontariosheep.org	0-50	16	2.45 - 3.05	65-79	138	2.525 - 3.28	95-109	100	2.3 - 2.50	Sheep	1.75 - 2.45	720
		50-64	79	2.65 - 3.25	80-94	206	2.625 - 2.95	110+	0	0 - 0.00			
12-Jan-23	Brussels www.ontariosheep.org	0-50	2	3.2 - 3.20	65-79	50	2.84 - 3.37	95-109	86	2.075 - 2.37	Sheep	1.75 - 2.63	568
		50-64	116	2.9808 - 3.33	80-94	139	2.06 - 2.98	110+	71	2 - 2.21			

Alberta Lamb Producers does not endorse individual markets or verify prices provided.

Trends* in Auction Price for Heavy Lambs in Alberta



*Due to differences among auctions, prices are reported as 'trends' rather than averages.
 This graph is updated on weeks with two or more markets reporting prices.