

Alberta Live Animal Markets: Visit individual market websites for more information about applicable auction fees and upcoming sales.

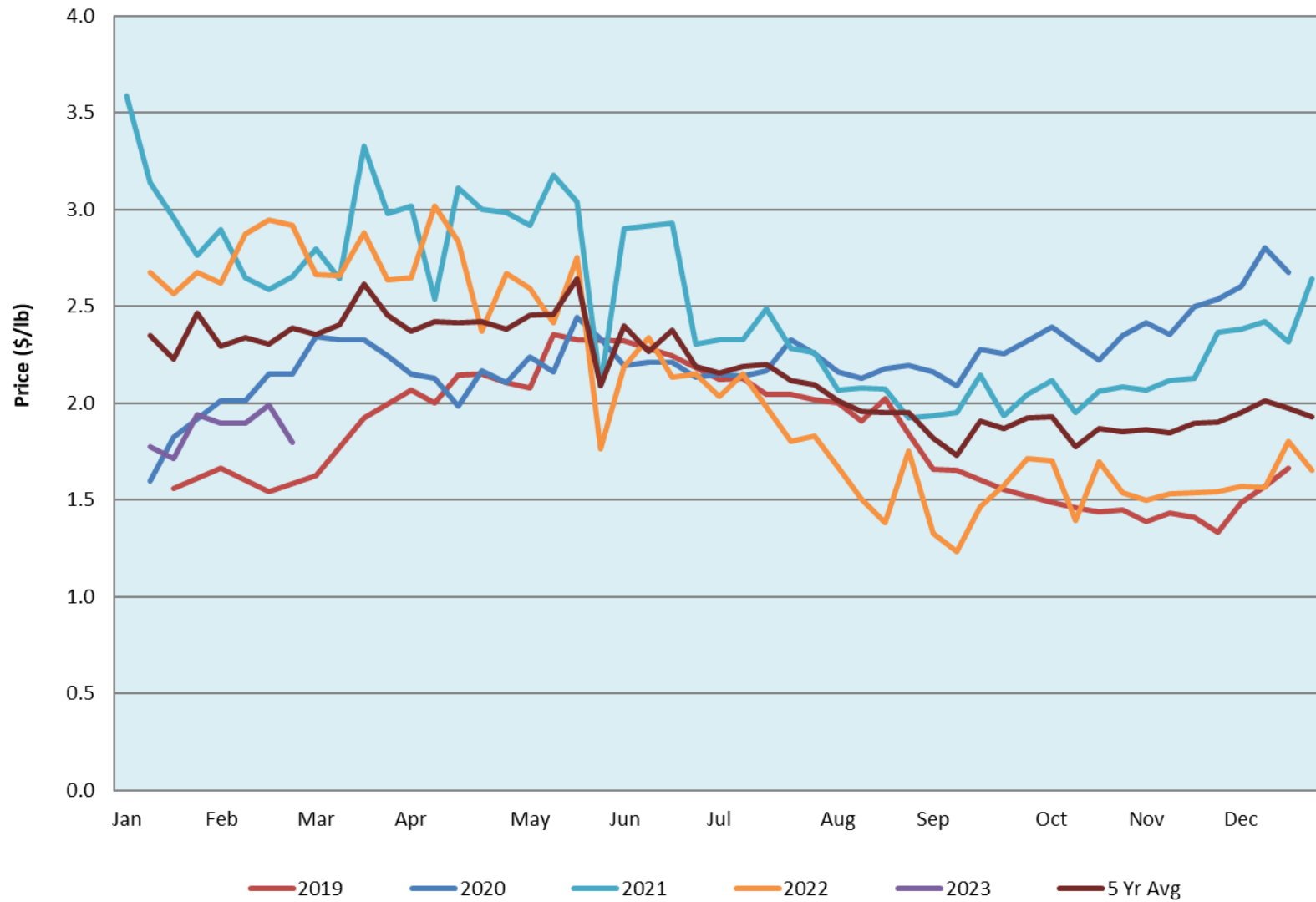
Date	Sale	Lambs (\$/lb)			Lambs (\$/lb)			Lambs (\$/lb)			Sheep(\$/lb): Bred ewes \$/hd		Total Head		
		Weight (lbs)	Head	low - high	Weight (lbs)	Head	low - high	Weight (lbs)	Head	low - high	low - high	low - high			
No sale this week	Beaver Hill www.beaverhillauctions.com	0-54: wool	-	0.00 - 0.00	70-85: wool	-	0.00 - 0.00	86-105:wool	-	0.00 - 0.00	Ewes: wool	0.00 - 0.00	0		
		0-54: hair	-	0.00 - 0.00				86-105:hair			-	0.00 - 0.00		Ewes: hair	0.00 - 0.00
		55-69: wool	-	0.00 - 0.00	70-85: hair	-	0.00 - 0.00	106+:wool	-	0.00 - 0.00	Rams: wool	0.00 - 0.00			
		55-69: hair	-	0.00 - 0.00				106+:hair			-	0.00 - 0.00		Rams: hair	0.00 - 0.00
			-								-			Bred Ewes	0.00 - 0.00
								-	0.00 - 0.00	Ewe&Lamb(s)	0.00 - 0.00				
21-Feb-23	VJV Westlock www.vjvauction.com	0-69: wool	-	2.1 - 2.58	70-85: wool	-	2 - 2.68	86-105: wool	-	1.73 - 2.10	Ewes: wool	1.32 - 1.48	164		
			-			-		86-105: hair	-	- - -	Ewes: hair	- - -			
			-			-					Rams: wool	1.00 - 1.35			
		0-69: hair	-	1.85 - 2.10	70-85: hair	-	1.9 - 2.05	106+: wool	-	1.5 - 1.80	Rams: hair	- - -			
			-			-		106+: hair	-	- - -	Bred Ewes:wool	1 - 2			
										Ewe&Lamb:hair	- - -				
21-Feb-23	Olds Auction www.oldsauktion.com	30-50	-	2.5 - 2.81	70-80	-	2.7 - 2.98	90-100	-	1.66 - 1.81	Ewes	0.90 - 1.04	125 (incl.goats)		
		50-60	-	2.5 - 2.96	80-90	-	2.53 - 2.78	100-110	-	1.69 - 1.90	Rams	1.01 - 1.11			
		60-70	-	2.6 - 2.98				110+	-	1.7 - 1.95	Bred Ewes	- - -			
18-Feb-23	Picture Butte www.picturebutteauction.ca							Feeder	-	2.08 - 2.17	Slaughter Ewes	- - -	-		
								Slaughter	-	1.59 - 1.95	Feeder Ewes	- - -			
											Ewe&lamb(s)	- - -			
											Bred ewes	- - -			
										Rams	1.36 - 2.01				

Ontario Live Animal Markets

20-Feb-23	OSI www.ontariosheep.org	0-50	21	2.05 - 2.88	65-80	147	2.70 - 3.20	95-110	78	2.22 - 2.42	Sheep	1.30 - 1.95	792
		50-64	33	2.875 - 3.40	80-95	219	2.30 - 2.63	110+	14	2.3 - 2.55			
21-Feb-23	OLEX www.ontariosheep.org	0-50	32	3.25 - 4.00	65-79	180	2.70 - 3.20	95-109	876	2.15 - 2.40	Sheep	1.25 - 2.15	2153
		50-64	175	2.75 - 3.33	80-94	305	2.28 - 2.83	110+	257	1.70 - 2.15			
20-Feb-23	Embrun www.ontariosheep.org	0-50	1	3.00 - 3.00	65-79	126	2.8 - 3.28	95-109	24	1.75 - 2.17	Sheep	0.52 - 1.22	348
		50-64	29	2.67 - 3.30	80-94	65	2.05 - 2.92	110+	29	1.7 - 2.08			
09-Feb-23	Brussels www.ontariosheep.org	0-50	7	3.8 - 4.10	65-79	73	2.825 - 3.16	95-109	61	2.35 - 2.55	Sheep	1.00 - 2.00	373
		50-64	11	3.25 - 3.45	80-94	88	2.49 - 3.10	110+	52	2.05 - 2.38			

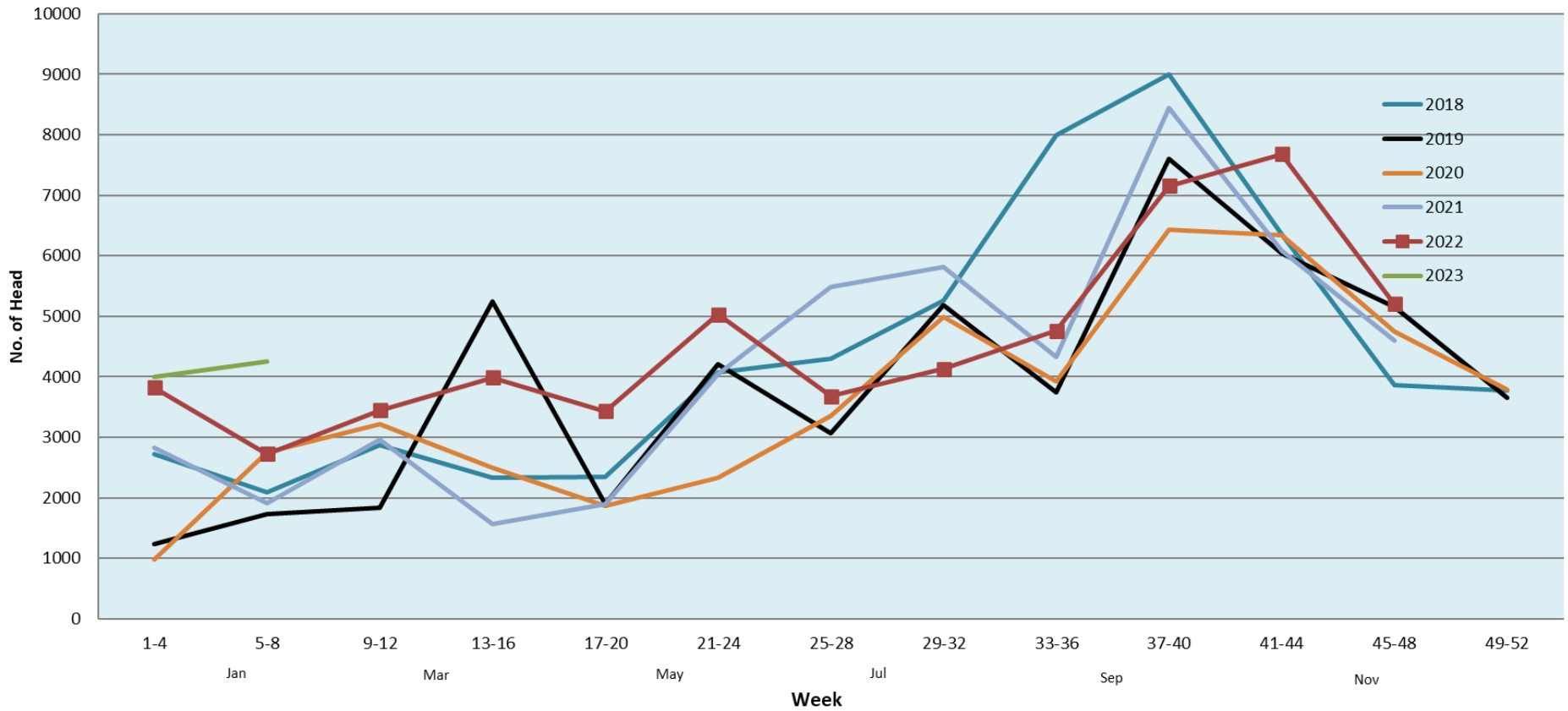
Alberta Lamb Producers does not endorse individual markets or verify prices provided.

Trends* in Auction Price for Heavy Lambs in Alberta



*Due to differences among auctions, prices are reported as 'trends' rather than averages.
 This graph is updated on weeks with two or more markets reporting prices.

Number of Head Reported Sold Through Three Alberta Live Animal Auctions



Note: Plotted numbers are the totals reported from 3 auction markets for each 4 week period
 Month indicators are approximate and intended for reference only
 Total/year: 2018 (56,980); 2019 (50,583); 2020 (47,221); 2021 (49,941); 2022 (55,050)