

# Alberta Lamb Producers Annual General Meeting 2019

Teresa Patry, Stettler

Alberta  
Lamb  
Producers 



Craig Ward, Lamont

## OUR MISSION

Empowering the sheep industry through education,  
innovation, and advocacy.



# Business Meeting Agenda

---

- **Approval of Agenda**
- **Approval of 2018 Minutes**
- **Acclaimed Director Speeches**
- **Financial Statement 2018/19**
- **Operational Budget 2019/20**
- **Your Check-off at Work: Review**
- **Looking Forward**
- **NSN Presentation**
- **Canadian Cattle Identification Agency (CCIA) Update/Questions**
- **Table Discussion and Resolutions**



# Approval of 2018 Minutes

*Can we please have a motion to amend or approve minutes?*

# Director Acclamations : 2019

---

Acclaimed Director speeches from:

Brittany Walker      Nicole Schieck  
Josh Korpan         Scott Vuylsteke



Katrina Sjoquist,  
Valleyview

Alberta  
Lamb  
Producers 

# Financial Report

Mr. Shannon Troke  
King & Company Chartered Accountants



Howard Woodrow,  
Lacombe

Alberta  
Lamb  
Producers





Ferne Gudnason, Tees

# Operational 2019/20 Budget

# Your Check-off at Work: Communications

---

- Quarterly N'ewesletter
- Classified ads on website and N'ewesletter
- N'ewesline (500 subscribers)
- Marketline (330 subscribers)



Bill & Lorna Gibson, Tees  
(photo: Orkney, Scotland)



# Your Check-off at Work: Communications

- Websites: [www.ablamb.ca](http://www.ablamb.ca) & [www.albertalamb.ca](http://www.albertalamb.ca)
- YouTube: SheepCentralAlberta
  - 1345 subscribers,
  - 50 videos
  - 348,555 views
- Webinars / recordings
- Social media channels
  - 632 followers on Face Book
  - 258 following on Twitter
  - 323 Twitter Followers



# Your Check-Off at Work: ALP Resources



Educational materials, lambing kits, webinars, videos, factsheets, and presentations/workshops.



Sheep and Goat Management



Sheep and Goat Management in Alberta Health



Sheep and Goat Management in Alberta Reproduction



Revised February 2010



## Canadian Lamb Leg

Naturally Nutrition Packed

Canada's Food Guide recommends adults consume 2-3 servings of Meat and Alternatives daily.

One serving is 75g of cooked lamb (the size of a deck of cards).

Nutrition Facts	
Serving Size 75 grams (75g)	
Amount Per Serving	
Calories 150	Calories from Fat 60
% Daily Value*	
Total Fat 7g	11%
Saturated Fat 3g	15%
Trans Fat 0g	
Cholesterol 55mg	18%
Sodium 60mg	3%
Total Carbohydrate 0g	0%
Dietary Fiber 0g	0%
Sugars 0g	
Protein 22g	
Vitamin A	Vitamin C 0%

**Benefits:**

- Excellent Source of protein, iron, zinc, and B12
- Good Source of Niacin and B6
- Source of Iron, Riboflavin, and Vitamin B6

## BIOSECURITY

How does biosecurity help?

Biosecurity practices are implemented to protect a farm from the entry and spread of infectious diseases. Implementing an organized on-farm biosecurity plan helps ensure all potential threats are being considered.

**Implementing a plan:**

The National Ready On-Farm Biosecurity Standard and Planning Guide were developed to help Canadian sheep operators develop biosecurity plans for their flock. Using a step-by-step approach, the Planning Guide helps identify management weaknesses and minimize the risk of disease being:

- introduced to a flock
- spread within a flock
- and spread from an infected flock to other flocks.

**Biosecurity plans target four areas to stop the spread of disease:**

- Animal Health Management
- Record Keeping
- Tools, Facilities, Equipment
- Disease Transmission by People

A flock veterinarian can help tailor a biosecurity plan to address diseases of greatest concern for each flock.

**How are infectious diseases control?**

Infectious diseases are caused by pathogens such as bacteria, viruses, fungi and protozoa.

Pathogens reproduce in the body of an infected animal and are shed in bodily fluids (nose, saliva, feces, urine, milk, respiratory secretions, reproductive organs, sweat, plasma).

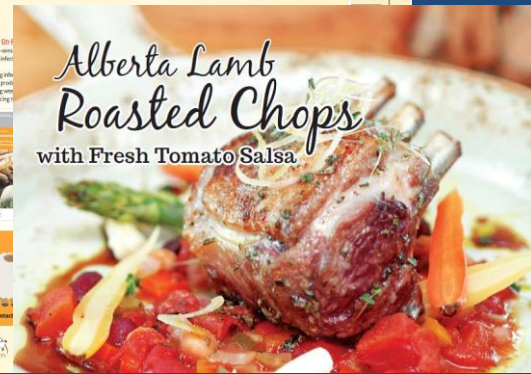
Diseases are spread as pathogens move from infected animals to non-infected animals by:

- Direct contact
- Indirect contact
- Airborne
- Contaminated feed
- Contaminated water
- Contaminated equipment
- Contaminated clothing
- Contaminated vehicles
- Contaminated people

**Plan for On-Farm Biosecurity:**

- Common sense
- Prevention
- Control
- Isolation
- Quarantine
- Monitoring
- Reporting
- Record Keeping
- Communication
- Education
- Training
- Review
- Update

Alberta Lamb Producers



# Your Check-off at Work: Advocacy

---

- Industry meetings
- Representation on national and provincial committees

Advocacy takes many director and staff hours, and represents thousands of miles travelled...



# Your Check-off at Work: Research

- Why is ALP important to research?
- Approved accuracy in diagnosing pregnancy and predicting litter size at early ewe gestation: Metabolomics analyses for Pen side kit development: Dr. Susan Markus
- Investigating and mitigating the emergence of *Haemonchus contortus* as a major pathogen of Western Canadian sheep: Dr. Michel Levy and Dr. John Gilleard, U of C
- Incidence and Characterization of Feedlot Lambs and Ewe Flock Lameness in Alberta: Dr. Karen Schwartzkopt-Genswein and Dr. Wiolene Nordi.



# Your Check-Off at Work: Provincial Activities

- Bighorn Sheep Management Plan
- Review of Predation Programs
- Farm and Ranch Employment/AgCoalition
- Support of 4-H, Calgary Stampede, Aggie Days
- Alberta Farm Animal Care



# Looking Forward: What to Watch



Lori Nibourg,  
Erskine

- Farm & Ranch Employment Standards: Under Review
- Changes to national traceability – 2020: Enhanced animal movement tracking
- Service Charge Model Plebiscite

# Looking Forward: Service Charge Plebiscite

---

- What has happened to-date with the ALP plebiscite request?
- Next Steps
- Why does ALP have a service charge?
- What do producer service funds fund?



Julia Los, Yellowhead County

Alberta  
Lamb  
Producers 

# Your Check-Off at Work: National Sheep Network



NSN represents 75% of Canada's ewe flock

Working together to move our industry forward:

- Canadian Federation of Agriculture
- AgGrowth Coalition: Business Risk Management
- Animal Health Canada
- Sheep Value Chain Roundtable
- National market watch





# Table Discussions & Resolutions



Alberta  
Lamb  
Producers 



**Alberta Sheep Breeders'  
Association  
2019 Symposium**

ASBA 1-866-967-4337

**Back to our Roots**

Join us for our  
**50th**  
Anniversary!

**Guest Speakers**

- Dr. Greg Penner
- Dr. Lesley Stubbings
- Tony Stolz

**Genovis Workshop**

**50th Anniversary  
Celebration Banquet**

**Trade Fair**

**Silent Auction**

**Red Deer, AB**

**October 17-19, 2019**

[www.albertasheepbreeders.ca](http://www.albertasheepbreeders.ca)



Thank ASBA  
Symposium for  
including ALP