

Return Undeliverable Canadian
Addresses to:

Alberta Lamb Producers
97 East Lake Ramp NE
Airdrie, Alberta T4A 0C3



N'ewesletter

Table of Contents

Alberta Lamb Producers

Message From Your Vice Chair: Adam French	01
Message From Your Director: Alison Neale	02
Message From Your Director in Training: Esther Hoogland	02
ALP Activities Update	03
Building the Future Together	05
Noise	07
ALP's Position on Proposed Federal Livestock Traceability Requirements	10

Producer Resources

Lamb and Sheep Update	10
Producer Spotlight: Eagle Beef and Multi 4-H Club	18
Lambing Time Reminders	19
Deworming to Reduce Economic Loss	21
ALP Website Unveiling	22

Industry Information

CFIA's Proposed Traceability Changes	04
Farming the Sun Research Project	18
SheepBytes: A Look Back and Where It Stands Today	20
Update on the Livestock Guardian Dog Project	21

Classifieds

Publication Schedule & Deadlines

ALP Contacts

Sheep Calendar



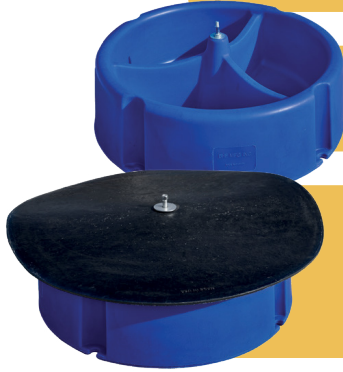
PM#40050072 Photo Credit: Gina Heidecker

April 2026



Goat and sheep oiler/scratcher

Steel Oil Tank
Adjustable Brushes
Top brush brushes out winter hair
Adjustable Flow Control Valve

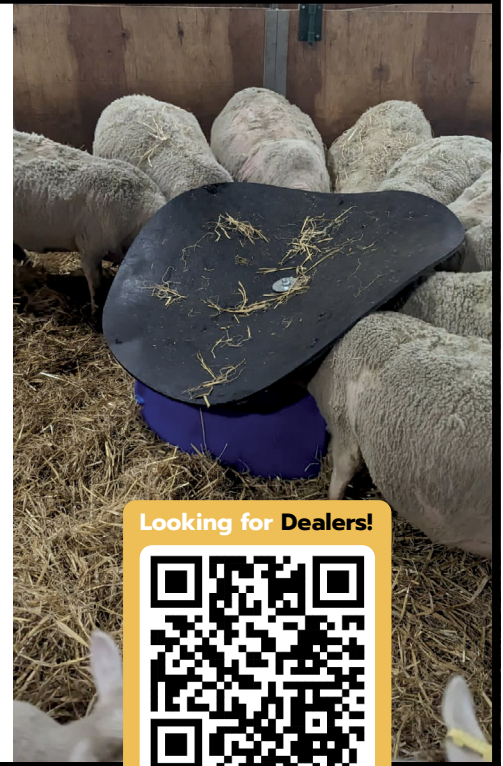


MFB 99

Mineral Feeder Only

MF-99

*No Oiler
Tip Proof
Weather Resistant Compartment Feeder



Looking for Dealers!



Let's Work Together

7367 Line 86, Wallenstein, ON NOB 2S0 | 519.698.2164
sales@bhfmfg.com | www.bhfmfg.com

BHFMFG^{INC}

Picture Butte Auction Ltd.

Southern Alberta's Only Weekly Sheep & Goat Auction



The Feed Store at Picture Butte Auction

We offer bagged feed and lick tubs for all your animals at competitive prices!

Check our website
www.pbauction.ca for current inventory and prices



Don't see what you want?
We do custom orders!
Open during sales and by appointment

Regular Sales

Every Saturday:

Misc, **Sheep**, Goats, and Horses sell at 10:00am
All Classes of Cattle sell at 11:30am

ALSO:

Sheep & Goat Specials

-Every First Saturday sale of the month

UPCOMING SALES

Sheep & Goat Special- May 2 at 10 am
Sheep & Goat Special- June 6 at 10 am
Sheep & Goat Special - August 8 at 10 am

Odd 'N Unusual Sales

-Last Saturday of April, May, June and September

Equipment Sales

-As Announced Through the Summer

There will be no sales
July 4, August 1, or September 5

We are a 2W Livestock Equipment Dealer!



Looking for a new handling system for your sheep?

2W offers a lightweight, easy-to-assemble system perfect for small livestock!



Give us a call at 403-732-4400



Proudly Manufactured
in Canada

Owner/Auctioneer: Brad de Leeuw
Owner/Order Buyer: David Slingerland
Auctioneer: Erik Dunsbergen
Auctioneer: Pete den Dekker
Office: Jennifer Schultz



Address: 110071 Hwy 25
Box 640, Picture Butte AB, T0K 1V0
Phone: 403-732-4400
Email: office@pbauction.ca
Website: www.pbauction.ca



Cover photo: Gina Heidecker

N'ewesletter Policy

Hard copies of N'ewesletter will be mailed to all producers who have purchased CSIP tags and paid check-off within the last two years. Producers who have not purchased tags within the last two years will be removed from our mailing list, but may continue receiving hard copies in the mail for \$25 + GST, paid annually. Please contact the office for an invoice. ALP offers each issue of N'ewesletter on our website for free access: link: <https://ablamb.ca/index.php/news-advertising/n-ewesletter>. ALP continually strives to responsibly use check-off dollars to benefit lamb producers in Alberta.

N'ewesletter is published by the Alberta Lamb Producers. Opinions expressed herein do not necessarily reflect those of Alberta Lamb Producers, the Board of Directors or its officers.

When reprinting articles from N'ewesletter, credit must be given to the ALP and/or the author, if applicable. No changes may be made without ALP's, or the author's, written permission.

Alberta Lamb Producers does not endorse or promote any of the advertisements or advertisers in the N'ewesletter.

For full Advertising Terms and Conditions see the Media Kit at <http://www.ablamb.ca/index.php/news-advertising/advertising>

Message From Your Vice Chair: Adam French

Looking Ahead: Seasons, Decisions, and the Value of Stepping Forward

By the time this article is published, we will hopefully be on the cusp of spring, along with the optimism that naturally comes with the changing of the seasons. On our farm, we are especially hopeful for decent rains after experiencing several successive dry years. The past two seasons forced some difficult management decisions. Our growth plans were put on hold as hay crops burnt up and the economics of purchasing feed simply didn't pencil out. We sold lambs early, culled hard, and then culled again. While strong cull prices made those decisions easier to accept, it also meant deferring plans to expand.

I am an optimist by nature, and once the decision to reduce numbers was made, I shifted my focus to the potential positives from our unplanned situation. The ewes that survived the selection pressure look exceptional, and the overall quality of the flock has improved. We have just completed lambing, and birthweights were up 8 percent, a strong indicator that flock quality is heading in the right direction.

Late last fall, we were fortunate to connect with a neighbour who had sold his cows and had some year-old hay available. While it wasn't the same quality I would normally feed, it provided much-needed volume. With careful supplementation, the sheep performed well. Now, in late winter, it is satisfying to look at the hay yard and know we will have a reasonable surplus heading into spring. That surplus opens opportunities: feeding a little longer to rest pastures, reseeding selected areas, and building forage quality for future seasons. With fewer mouths to feed, we can invest more intentionally in long-term pasture improvement.

I have always valued planning and the insights gained from good record-keeping. Tracking lambing data, birthweights, weaning weights, health treatments, and market performance helps me identify which ewes consistently perform and which do not. It is easy to become attached to the friendly ewe who greets you at the fence, but if her lambs consistently underperform, she doesn't get to stay. Over time, disciplined selection improves productivity, efficiency, and overall flock performance.

Shifting topics, I want to encourage producers to consider volunteering and joining the Board of Alberta Lamb Producers. While our Annual General Meeting isn't until November, now is the time to start thinking about becoming more actively involved in your industry organization. Serving on the ALP Board is a commitment, but it is also deeply rewarding. The Board and staff work year-round to support the sheep industry, tackling complex issues and advocating on behalf of producers. While we all have full lives, involvement offers a valuable opportunity to build connections, learn, and help shape the future of our industry.



Agripolitics is not for the faint of heart, but it does provide a chance to contribute, grow, and give back. A healthy industry depends on strong engagement, and one of the best ways to demonstrate that is by stepping forward to serve. The ALP Board operates on staggered two-year terms, with half the positions up for election each year. Too often, roles are filled by acclamation due to limited nominations. Now is the time to get curious and consider putting your name forward later this year.

Serving on the Board does come with work and the occasional headache, but it is ultimately very rewarding. You meet producers from across the province and the country, contribute to important decisions, and gain insights you can take back to your own operation. I encourage all producers to consider putting their hand up to serve. Our industry is stronger when we all take part.

Adam French

Message From Your Director: Alison Neale

Spring is trying to break through, but winter is holding on for dear life. I am sick and tired of the cold wind, semi-warm days, and freezing nights. Lambing was a whirlwind—it felt over far too soon, and almost made me wish I could repeat it again in a couple of weeks. This year, instead of lambing in April, I decided to sync the ewes to lamb in February—historically the coldest winter month. As expected, temperatures plummeted to -40°C at night just as lambing began. Thank goodness for towels, heat lamps, and cameras; I barely slept.



Nights were spent watching screens, making countless trips to the barn, and checking ewes and lambs, hoping they'd make it through the cold—and I loved every minute. As I'm sure it resonates with most of you, lambing is equal parts excitement, exhaustion, and problem-solving.

During those long shifts, I was reminded of how far I've come, both in knowledge and in resources. While I try my best in managing my sheep's nutrition and health, reaching out to trusted connections to make important decisions makes all the difference.

At the end of summer, I stockpiled oat greenfeed to get me through lambing. I got it tested—only to find the nitrates were extremely high. I was shocked. "Do not feed," is what I was reading. What now? I reached out to multiple nutritionists, and together we formulated a diet that allowed me to safely feed the high-nitrate feed. What felt like a disaster turned into

a manageable situation—and even saved on bedding costs, as the sheep didn't eat the stems.

I also tested my water, which came back high in iron, indicating a likely copper deficiency in my flock. Back to the nutritionists we went, and we developed a mineral program that met the sheep's needs before, during, and after lambing. Thanks to this preparation, I would say this was the most well-planned lambing I've ever experienced.

What prompted the water test? The input from my veterinarian, during discussions about issues I faced last lambing season. My veterinarian has been one of my most valuable resources, and I'm very lucky to have such a strong connection. The relationship you have with your vet is crucial. For me, it means I can text or call anytime with questions—whether about symptoms I'm seeing or production decisions—and get guidance I can trust.

Being prepared, leaning on trusted advisors, and learning from each season is something I know many of us in Alberta's sheep industry strive for. Being a part of the sheep industry, we can share knowledge, access resources, and support one another to keep our flocks healthy and productive. Whether it's connecting with a veterinarian, nutritionist, or fellow producer, building those relationships strengthens all of us and helps the industry thrive.

Alison Neale

Message From Your Director in Training: Esther Hoogland

This week we had another week of above zero and things have gotten a little bit – actually, a lot bit – muddy around here. The last six weeks we have had quite the range of weather from $+10$ to -25 , wind, rain, snow and everything in between. Despite this, the handful of January lambs are doing great and growing like little weeds. As I write this, I am watching the lambs race each other across the straw bales.



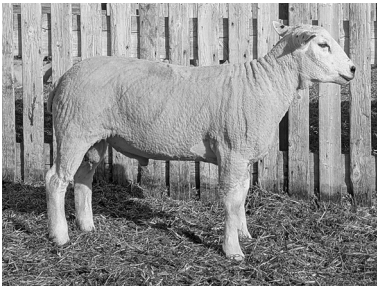
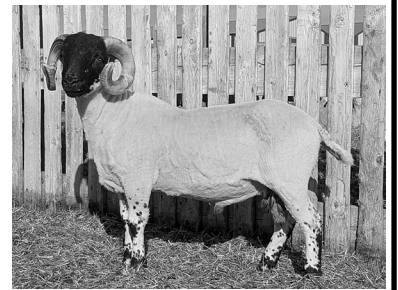
My mom and I run a herd of about 250 hair ewes and we do all our lambing out on pasture. In 2024/25 we culled very hard and decreased our numbers from about 400 ewes to 200 due to lack of rain and big life events (enter Johnny). Despite that, we held back our best ewe lambs and are on track to have our numbers back up within the next couple of lambing cycles.

We do the majority of lambing April – June and have a small batch of ewes that lamb out December and January. The last two years I have learned how to do everything with a baby strapped to my back and this summer will be even more in-



Yearling Rams Now Available

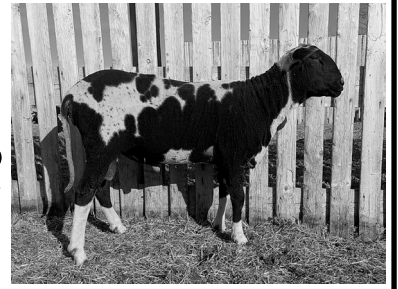
Or join the wait-list for select breeding stock from our April 2026 lamb crop!



WHITNEY MEADOWS

Registered Texels

Registered Scottish Blackface
Composite Coloured Dairy Sheep



Ken & Karla Van Driesten Coalhurst, AB
587-727-0433 | whitneymeadowsfarm@gmail.com

teresting with a toddler running around. Thankfully, the ewes don't pay too much attention to him except for that one time he stole a new lamb from a ewe. She was not a happy camper.

In the summer and fall, we rotationally graze the ewes and lambs throughout our pastures using portable electric fence and during the spring and winter they stay close to home eating hay and grain.

I became the director in training last November at the AGM and have really enjoyed my time on the board. We put a lot of work into the strategic plan this January, and I am looking forward to watching it unfold over the next five years. It has been a pleasure working with people who are just as passionate about the Alberta sheep industry as I am and we have a lot of big plans for 2026, so stay tuned!

Esther Hoogland

ALP Activities Update: October 2025 to March 2026

Over the fall and winter months, Alberta Lamb Producers' directors and staff have been actively representing the organization across Alberta and nationally. Our team has engaged with producers, industry partners, researchers, and sector networks to advance priorities in governance, marketing, animal health,

and producer support. The following highlights capture key meetings and events attended from October 2025 through March 2026.

Governance & Board Engagement

- ALP Director Video Conferences (second and fourth Tuesday each month)
- ALP Directors' Meeting, Airdrie
- ALP Strategic Planning Workshop
- Marketing Council Managers Meeting

Advisory Committees & Oversight

- AEPA Advisory Committee Meeting
- Technology Access Centre for Livestock Production Advisory Panel
- Green Certificate Program – Sheep Specialty Advisory and Expert Panels
- Campaign For Wool Canada Advisory Board

Marketing, Networks & Sector Collaboration

- National Sheep Network Meeting
- WeCAHN Small Ruminant Network Meeting
- CAHSS Small Ruminant Network Meeting
- Leduc County Webinar – Raising Sheep (Presenter)

RDAR Engagement

- RDAR board candidate forum
- RDAR Annual General Meeting

Agricultural Leadership & Professional Development

- Ag Leadership Workshop
- Ag Leadership Learning Series Webinar

Producer, Industry & Interprovincial Outreach

- ALP AGM & Conference
- Alberta Sheep Breeders Association Symposium
- Meet and greet with Olds College CEO
- CgFARAD Stakeholder Meeting
- Westfine Meats Producer Meeting
- Canadian Federation of Agriculture General Managers Meeting
- Canadian Sheep Federation AGM
- Manitoba Sheep Association AGM
- Ontario Sheep Farmers AGM
- Sask Sheep Development Board AGM & Symposium
- Farming Forward AGM

CFIA's Proposed Traceability Changes: What They Mean for Alberta's Lamb Industry

The Canadian Food Inspection Agency (CFIA) continues to advance proposed amendments to Part XV of the Health of Animals Regulations (Identification and Traceability). These amendments (still not finalized) represent the most significant modernization of Canada's traceability framework in more than a decade.

For Alberta's lamb sector, the proposals would formalize and expand requirements around identification, premises registration, and movement reporting, with the goal of strengthening disease response, food safety, and emergency management.

Producer associations across Western Canada have raised concerns about feasibility, cost, and administrative burden. CFIA has acknowledged these concerns and has paused final publication while further engagement continues. Alberta Lamb Producers (ALP) has been deeply involved in these discussions, both historically and throughout the current consultation cycle.

Key Proposed Requirements for Sheep Producers (As outlined in CFIA's posted sheep sector regulatory guide)

Premises Identification

- Mandatory Premises Identification Number (PID) for all locations where sheep are kept
- PID information must be kept current, including ownership, contact details, and species on site

- Changes to premises information must be reported within the prescribed timeframe

Animal Identification

- Use of CFIA approved sheep identifiers (RFID tags)
- Tags must be applied before animals leave the farm of origin
- Lost tags must be replaced, with records maintained

Movement Reporting

Producers may be required to report movements to, from, and between:

- Farms
- Assembly points (auction markets)
- Fairs and exhibitions
- Community pastures
- Feedlots
- Slaughter facilities

Movement reports would include:

- Departure and arrival PID numbers
- Date of movement
- Number of animals
- Indicator numbers where required

CFIA is proposing shorter, standardized reporting windows across species.

Record Keeping

Producers would need to maintain records of:

- Animals on site
- Movements in and out
- Tag application and replacement
- Deaths and carcass disposal
- Buyer, seller, and transporter information

Records must be retained for a defined period and be available for inspection.

On Farm Events

Some on farm events—such as births, deaths, or tag replacements—may require reporting or documentation depending on the final regulatory language.

Historical Consultation Between CFIA and Alberta Lamb Producers

CFIA's engagement with ALP on traceability spans more than a decade. ALP has consistently advocated for sheep specific solutions that reflect the realities of Alberta's diverse operations.

2013–2016: Early Modernization Discussions

ALP participated in CFIA’s initial multi species traceability modernization consultations. ALP highlighted challenges unique to sheep, including tag retention, mixed species operations, and limited digital tools.

2017–2019: Draft Framework and Technical Sessions

CFIA shared early drafts of proposed amendments with provincial sheep organizations. ALP provided feedback through both direct channels and the Canadian Sheep Federation (CSF). ALP emphasized the need for practical movement reporting mechanisms and alignment with Alberta’s PID system.

2020–2022: Technical Clarification and Scenario Testing

CFIA held technical briefings with ALP to refine species specific requirements. ALP provided real world examples—community pastures, 4-H projects, mixed operations—to ensure regulations would be workable.

2023: 90 Day Public Consultation

ALP submitted formal feedback during CFIA’s Canada Gazette, Part I consultation. ALP reinforced concerns about administrative burden, technology gaps, and the need for realistic reporting timelines. CFIA’s “What We Heard” report reflected many issues raised by ALP and other sheep organizations.

2024–Present: Ongoing Engagement

CFIA continues to meet with ALP staff and directors to refine sheep specific requirements. ALP is actively relaying producer feedback gathered through meetings, calls, and producer group discussions. Discussions focus on practicality, cost, technology needs, and alignment with Alberta’s existing systems.

What Alberta Producers Are Saying

Across producer meetings, direct calls, and conversations with producer groups, several themes consistently emerge:

- Administrative burden remains a top concern, especially for small or mixed operations
- Technology limitations—including internet access and the cost of RFID readers—pose barriers
- Clarity and consistency are needed to avoid cattle centric interpretations of sheep requirements
- Feasibility of movement reporting for pasture moves, community grazing, and youth projects remains a major question
- Transition periods and support will be essential for successful implementation

These concerns mirror those raised by other livestock sectors, where producer groups have urged CFIA to pause or adjust the proposal until practical solutions are identified.

ALP’s Ongoing Role in Shaping the Final Regulations

ALP continues to:

- Participate in CFIA engagement sessions and technical discussions
- Provide species specific feedback grounded in Alberta’s production realities
- Advocate for simple, low burden reporting tools that work for operations of all sizes
- Push for alignment with Alberta’s PID system to avoid duplication
- Ensure transition periods, training, and support programs are part of the final regulatory package
- Communicate producer concerns directly to CFIA and national partners

ALP will continue to keep producers informed as the regulatory process evolves and will advocate for a system that protects animal health and market access without creating unnecessary burden. The ALP board has formally communicated to the CFIA that it cannot support the proposed traceability regulations in their current form.

Building the Future Together: ALP’s Strategic Planning Journey for 2027–2032

Alberta Lamb Producers has begun an important new chapter: the development of our 2027–2032 Strategic Plan. This plan will guide our priorities, investments, and advocacy work for the next five years, and we are committed to ensuring it reflects the realities, needs, and aspirations of Alberta’s lamb sector. Over the past several months, ALP has undertaken a comprehensive, producer driven process to gather meaningful input from across the industry.

Listening to Producers at the 2025 AGM & Conference

Our first step was to hear directly from the people at the heart of this sector. At the 2025 AGM and Conference, ALP launched a province wide survey designed to capture producer perspectives on current challenges, emerging opportunities, and the role ALP should play in supporting a resilient and profitable industry.

The survey was made available in multiple formats to ensure broad participation:

- Distributed in print at the AGM and Conference
- Included as an attachment in this newsletter
- Sent directly to all eligible producers via email

The feedback gathered through this survey forms the foundation of the strategic planning process, highlighting themes such as market access, producer education, research priorities, and the need for strong, consistent advocacy.



Improve castration success with the Test Grip!



Equipment solutions to increase efficiency in time, energy and feed conversion



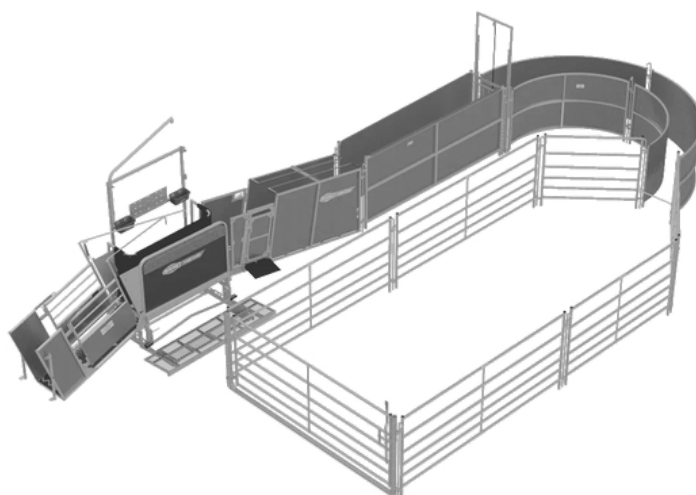
ADVANTAGE FEEDERS

- Controlled feeding
- Good for all ages and stages of sheep
- Better feed conversion with little and often feedings
- More gain with less grain
- No waste



RITCHIE COMBI CLAMP

- Reduces Stress on Livestock
- Record breaking efficiency
- Able to weigh while processing
- Portable with no power needed
- Useful for: weighing, sorting, vaccinating, tagging, drenching, preg checking, hoof trimming, crutching, ultrasounding, etc.



HEATWAVE MILKWARMER

- Cost-Effective
- Easy to clean
- Priming pump & check valve
- Increase rate of growth



WWW.HUBEREQUIPMENT.COM

1-844-482-HUBERAG (482-3724)

ORDERS@HUBEREQUIPMENT.COM



SHEEP ENVIRONMENT SOLUTIONS

Your Solution for Proper Ventilation

Chinook is the only company that has the knowledge and equipment to ventilate sheep barns properly. We design ventilation systems to keep your ewes healthy and your lambs thriving.

- Fresh air = higher profitability
- Low humidity
- Evenly controlled temperatures

Feed Your Herd with Valmetal and Chinook

It's easier to feed your herd with Valmetal feed carts and feed systems offered by Chinook.

- Precise rations
- Healthier animals
- Reduced maintenance and feed costs

Design & Penning Solutions

Keep your sheep contained while maintaining herd structure and reduce the stress on your animals. Chinook manufactures custom penning, feed gates and bonding jugs based on your specifications.

Contact us today to find out how we can make your operation the best that it can be.
403.885.2527 • info@chinookfarm.com
chinookfarm.com



Engaging Expert Support to Deepen the Conversation

To build on this initial input, ALP engaged Osborne Interim Consulting to support the next phase of the process. Their role has been to help us gather deeper insights and ensure the plan is grounded in both producer experience and broader industry context.

Osborne's work has included:

- Conducting one on one interviews with producers across operation sizes and regions
- Speaking with key industry stakeholders, including processors, researchers, and value chain partners
- Facilitating a full day strategic planning workshop with the ALP Board and staff

This workshop brought together all the data collected to date: survey results, interview themes, and sector trends to identify shared priorities and clarify the long term direction for the organization. The session focused on aligning ALP's mandate with the evolving needs of the industry and ensuring the organization is positioned to deliver meaningful value to producers over the next five years.

What Comes Next

ALP is in the final stages of drafting the 2027–2032 Strategic Plan. The insights gathered through the producer survey, stakeholder interviews, and the full day planning workshop have provided a strong foundation for setting clear priorities for the next five years. The Board is reviewing this material to shape a

plan that reflects the needs of Alberta's lamb sector and positions the organization for long term success.

2027-2032 Strategic Pillars are:

1. Grow production of Alberta lamb
2. Strengthen unity, trust and communication in industry so sector can move forward together
3. Advocate on processing access, trade barriers and regulations
4. Build producer capability through practical extension and mentorship

The completed strategic plan will be shared with producers at the 2026 Annual General Meeting, outlining the direction, goals, and commitments that will guide ALP's work through 2032.

Noise

Marty Winchell, Chair, Alberta Lamb Producers

I'm listening to Spotify as I put pen to paper, having just come in from a couple of hours in the lambing barn, surrounded by the steady bleating of moms calling to their babies. Earlier today, I was at a conference listening to speakers, followed by a two hour Zoom call after work. Somewhere in between, I tried to keep up with world events, watching fertilizer and fuel markets climb with no sign of slowing. Information has never been easier to access, yet it feels like we're facing an endless wave of noise.



Ile De France • Canadian Arcott • Rideau Arcott

Superior ovine genetics for the profit oriented lamb producer.



High Health Status • Closed Flock Since 1988 • Performance Based Selection

PHOTO: JOHANE JANELLE

Medicine Ridge Ovine

www.MedicineRidgeOvine.com



New Norway, Alberta
Gerrit & Ute Brinkmann

Ph: 780-855-2477

brinkmann@equitopfarm.com

By the time you read this newsletter, you will have received at least two emails from ALP. These weren't our usual "n'ewesletters," workshop notices, or event updates. At a time of year when most of us are flipping through seed and bull catalogues and checking the latest ram sales, the Canadian Food Inspection Agency released its proposed changes to the national traceability system.

Although these changes have been in development for years, I suspect many producers were caught off guard. The material wasn't straightforward, and interpreting its impact on Alberta's sheep industry required time and careful review.

Your board worked through the new regulations and identified several areas where clarification was needed. While we sought answers, social media quickly filled with commentary, and speculation. Producer groups across Western Canada were being urged to reject the proposed regulations.

In an industry with 1600 producers it requires effort to seek out the opinions of producers that are not readily available on social media. We as a board hope that with any issues you reach out to us to engage in meaningful respectful discussion.

With producer consultation and involvement, we sent an email stating that:

we cannot support the proposed federal livestock traceability requirements in their current form.

This process has required significant time and resources, and ALP will continue to stay engaged. We remain committed to monitoring CFIA developments, pushing for workable solutions, and ensuring Alberta producers have a clear and informed voice at the table.

But even with all the noise surrounding traceability, we cannot lose momentum on the other priorities that matter to you. We're continuing to plan for the next AGM and conference, develop and refine a strategic plan, explore national unity, strengthen relationships with industry partners, and identify areas where provinces can work toward common goals.

When I first joined the board more than three years ago, flock sizes were declining and we were watching some of our larger producers exit the industry. Today, despite regulatory uncertainty, I'm feeling more optimistic than at any other time in the last few years. I'm hearing more conversation about growth, opportunity, and market strength. We're finding common ground across provinces. And every new lamb discovered during a barn check feels like a reminder that this industry still has tremendous potential.

It really is a good time to be in the sheep industry.

We just need to learn to focus on the right noise.

Morinville Colony
Sheep Breeders

Morinville Colony

56422 Hwy 44, Sturgeon County, AB T8R 0H3



Our Sixth Online Production Ram & Ewe Sale

Friday, June 12 and Saturday, June 13, 2026

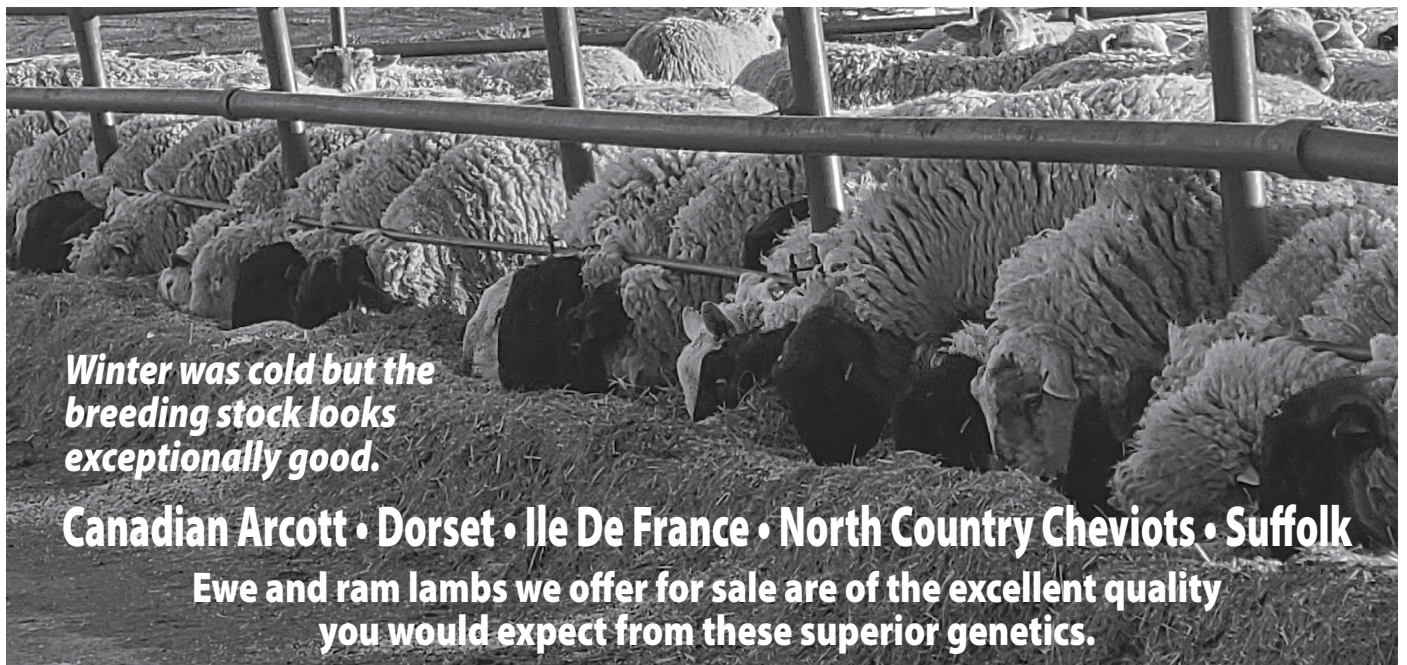
with Preview on Thursday, June 11 • Lunch served from 11am to 4 pm

**45 to 50 yearling rams and 30 to 40 ewe lambs ready to breed this fall
will be on offer**

DLMS Farm Gate Timed Auctions (Online)

Sale will be a Racehorse Style Close with Extended Bidding

<https://farmgatetimedauctions.ca/home>



*Winter was cold but the
breeding stock looks
exceptionally good.*

Canadian Arcott • Dorset • Ile De France • North Country Cheviots • Suffolk

**Ewe and ram lambs we offer for sale are of the excellent quality
you would expect from these superior genetics.**

Contact: John Wurz, morinillesheep@gmail.com - 780.818.9634

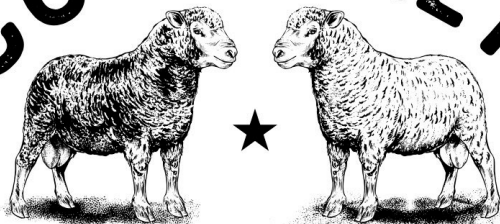
Albert Wurz - 780.691.3423

Delivery is free of charge in Alberta.

**Shipping to all other provinces – even with our busy schedule,
we will try to accommodate buyers as much as possible.**

Call us about our delivery times and options.

COOL ALLY



• Livestock •

TOMPKINS, SK

★PUREBRED & COMMERCIAL ILE DE FRANCE ★

&

★COMMERCIAL QUALITY BLACK WOOL SHEEP ★

COLTON BOWYER & ALYSSA BOLES

306-671-8155

306-529-7349

coolallylivestock@gmail.com

★ Only 1 hour from the Alberta border on highway 1 ★



Scrapie Genotyping

OPP and JOHNES
TESTED NEGATIVE FLOCK



Including
Carcass Data



coolallylivestock



cool_ally_livestock



Alberta Lamb Producers' Position on Proposed Federal Livestock Traceability Requirements

Alberta Lamb Producers (ALP) has been in ongoing discussions with other provincial boards, the Canadian Food Inspection Agency (CFIA), and our producers regarding the proposed changes to national traceability requirements.

We have heard the concerns raised by producers, and as elected representatives of the industry, we cannot support the proposed federal livestock traceability requirements in their current form.

ALP continues to monitor CFIA developments and any potential changes. We will take every opportunity to provide input on traceability and its impacts on Alberta's sheep industry. An effective traceability system is important; however, to achieve its intended outcomes, the system must also be practical and workable for producers and industry to implement.

For clarity, Alberta is not a member of the Canadian Sheep Federation (CSF). Any communication from other sheep producer groups does not represent ALP unless it is issued directly by Alberta Lamb Producers.

ALP encourages all producers to stay informed and review information from reputable sources. Your board has submitted questions to the CFIA for clarification and has posted a link to the proposed changes on our website.

Lamb and Sheep Update

Ann Boyda, Provincial Livestock Market Analyst, Alberta Agriculture and Irrigation

Overview

The Alberta sheep and lamb sector is poised for growth. After three years of consecutive decline in the national ewe breeding stock, other jurisdictions are now taking advantage of higher prices and strong demand to reclaim some of the domestic market. This update looks at January 1st inventory estimates and the sheep and lamb sector's positioning for future growth.

Inventory

Statistics Canada reported the national number of sheep and lambs on farms as rising by three per cent from last year to 833,000 head, as of January 1, 2026. The national ewe herd size rose by 2.4 per cent to 489,500 head and the number of lambs retained for breeding rose by 1.9 per cent to 90,300 head.



Advantage Breeders



Sheep Sale

**SAVE THE DATE
JUNE 27, 2026**

**CANNAN FARMS
DYLAN: (780)-603-8767**

**SHEEP LAKE
MIKE: (780)-307-3385
EMMA: (780)-307-2818**

**REGISTERED SUFFOLK AND DORSET
RAM LAMBS AND EWE LAMBS**



**Sheep Lake Sires
GMR 29L GMR 30L**

**Cannan Sire
RSY 23K**

Guardian™
Milk Replacers
With Shield Technology

Following Nature's Lead...

Guardian Lamb
22-22-26

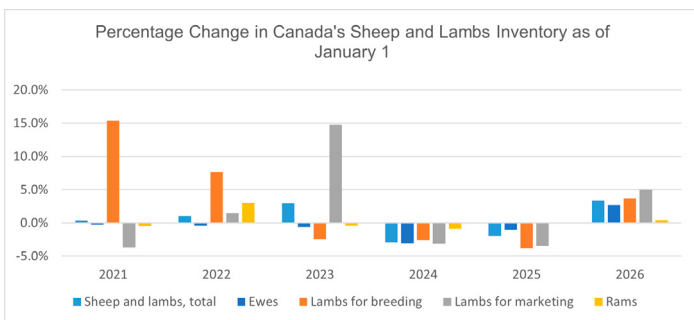
Guardian milk replacer with Shield Technology™ is specifically designed to support the lamb's immune system during the critical first weeks of life.

For more information contact our team
www.pmtgroup.com
1-800-299-7904

Manufactured by: **PMT**

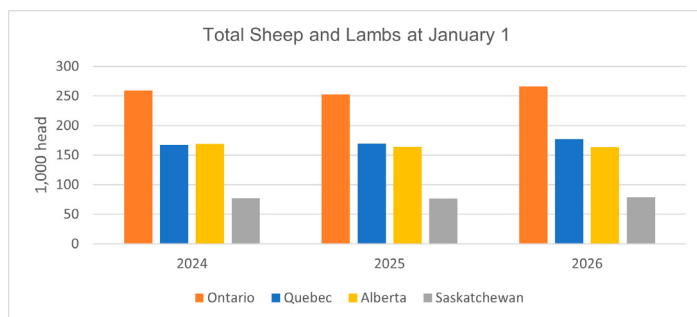
Marketing lambs were reported at 229,600 head, a 5.1 per cent increase from last year.

Nationally, the 2026 January 1st inventory shows signs of herd recovery after two consecutive years of contraction. Increases were greatest in Ontario where total sheep and lambs rose by 5.7 per cent to 266,200 head, followed by Quebec where total inventory rose by 4.8 per cent to 177,700 head.



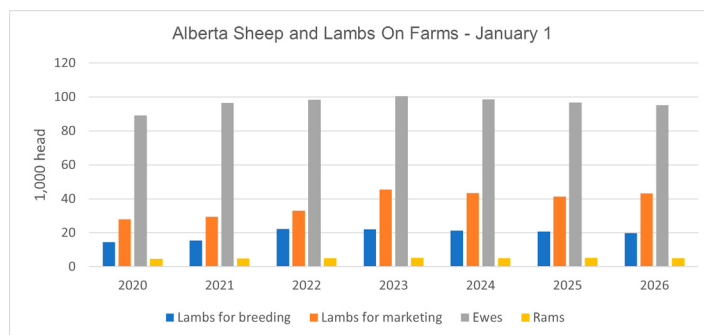
Source: Statistics Canada

Western provinces reported a modest growth of 0.5 per cent to 355,900 head, primarily driven by Saskatchewan (3.9 per cent increase to 79,300 head) and to a lesser degree in British Columbia (1.3 per cent increase to 38,700 head). Alberta and Manitoba both reported declining inventories from the previous year of 163,400 head and 74,500 head, respectively.



Source: Statistics Canada

Looking more closely at Alberta, the ewe inventory declined from a high of 100,500 head in 2023 to 95,100 head in 2026. Similarly, lambs retained for breeding declined from 22,200 head in 2022 to 19,800 head currently. Higher lamb prices may have incentivized producers to sell more ewe lambs rather than retain them for breeding, contributing to the decline in total sheep and lamb inventory.



Source: Statistics Canada

Supply and disposition

In 2025, Alberta started the year with 164,100 head of sheep. Over the year, an additional 142,600 lambs were born, 13,800 head were imported from other provinces and 8,300 animals were imported from the U.S., bringing the total supply to 328,800 head. The disposition of sheep over the year included 103,100 head that were slaughtered in federally and provincially inspected facilities, 15,100 head that were exported to other provinces, 22,200 head lost to death and condemnations, 8,300 head imported for slaughter, 4,700 head consumed on farms and 12,000 head sold direct to consumers. The remaining animal inventory as of January 1, 2026, was 163,400 head.

Alberta Supply and Disposition of Sheep, 2025

Source: Statistics Canada (See Page 17)

Canada imported nearly 31.3 million tonnes of sheep and lamb meat in 2025, the majority of which was frozen sheep cuts (69.5 per cent). With strong demand for product and favourable prices, opportunities for growth in the domestic market exist.

Article continued on Page 17

2026 Parker Stock Farm and OD Farm Production Sale

June 5-6, 2026

DLMS Farmgate Auction

Yearling Ewes and Rams on offer from these two POWERHOUSE stud rams.
All rams semen tested, scrapie genotyping and GenOvis performance information available for all



Since 2006



Moralta 35H "The Boss"

Registration Number: 776570

Sire: Happy Hollows Ringo 87F
[CAN] 750903

Dam: Parker Lee 48D 55E [CAN] 741725

The complete package maternally and on the scale getting your lambs to market faster

Parker Super Stud 25K

Registration Number: 799989

Sire: Drinkstone SuperStud Y68:K25 [GBR] 993382

Dam: Parker 10Z 140D [CAN] 729899

25K was destined to be our top stud ram to follow "The Boss". We unfortunately lost 25K due to injury. The last 25K progeny to be offered for sale.



Glen 403-443-0401 Kathy 403-443-0064 Bev 403-370-3744

Email parkerstockfarm1@gmail.com

www.parkerstockfarm.com

BOVILIS[®]

Covexin[®] 10

The only vaccine
for ruminants
that helps
protect against
diseases caused
by *Clostridium*
perfringens
type A



Helping Sheep Stay One Step Ahead of Clostridial Risks

Bovilis® Covexin® 10 at a Glance

INDICATIONS	<ul style="list-style-type: none"> • For the vaccination of healthy sheep and cattle, 2 weeks of age or older • Aids in the prevention of diseases caused by the 10 bacterin-toxoids listed in the table below
-------------	--

BACTERIN-TOXOID

1. <i>Clostridium (C.) chauvoei</i> (blackleg)	2. <i>C. perfringens</i> type C (hemorrhagic enterotoxaemia)
3. <i>C. haemolyticum</i> (bacillary hemoglobinuria)	4. <i>C. perfringens</i> type D (pulpy kidney)
5. <i>C. novyi</i> type B (black disease or infectious necrotic hepatitis)	6. <i>C. septicum</i> (malignant oedema)
7. <i>C. perfringens</i> type A (enterotoxaemia, gas gangrene, sudden death syndrome)	8. <i>C. sordellii</i> (sudden death syndrome)
9. <i>C. perfringens</i> type B (lamb dysentery)	10. <i>C. tetani</i> (tetanus)

Bovilis® Covexin® 10 offers the broadest clostridial protection in the market.

ADMINISTRATION & DOSAGE

Primary Vaccination	<p>Sheep: Initial and subsequent dose: 1 mL, 4-6 weeks apart. Subcutaneous injection.</p> <p>Cattle: Initial and subsequent dose: 2 mL, 4-6 weeks apart. Subcutaneous injection.</p>
Revaccination	An annual booster vaccination is required within twelve months.

MEAT WITHDRAWAL PERIOD	21 days
------------------------	---------

Need more information?

- Producers: talk to your veterinarian to determine whether Bovilis® Covexin® 10 is suitable for the animal to be vaccinated
- Veterinarians: please contact your Merck Animal Health representative, call **1-866-683-7838**, or go to **www.merck-animal-health.ca**

Available
in a 50 mL format



Always read and follow the label instructions to ensure this product is suitable for the animal to be vaccinated. Vaccination may not protect every animal that gets vaccinated.

BOVILIS® is a registered trademark of Intervet International B.V. Used under license.
COVEXIN® is a registered trademark of Intervet Inc. Used under license.
MERCK® is a registered trademark of Merck Sharp & Dohme LLC. Used under license.
© 2024 Merck & Co., Inc., Rahway, NJ, USA and its affiliates. All rights reserved.
CA-BOV-240900001



The Badlands Select Sales

-Spring Select May 29-30, 2026

**-Summer Select Aug. 7-8, 2026, featuring our
Open House and the Badlands Junior Sheep Show**

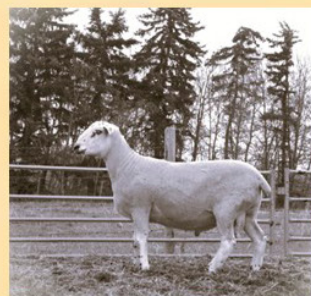
Patric Lyster 780-614-0569 Lorri Lyster 403-741-8597 Darrel Ashbacher 403-860-6192

~Halkirk, Alberta



SUFFOLK

CANADIAN ARCOTT



SHROPSHIRE

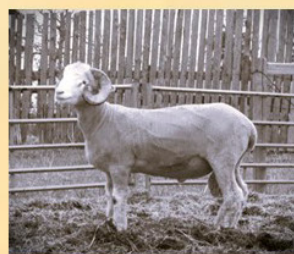


HAMPSHIRE



HORNED DORSET

POLLED DORSET



-January and May 2025 yearling rams and ewes on offer in the spring sale

-Fall 2025 yearlings and January 2026 ram lambs and ewe lambs

on offer in the summer sale



Find us on Facebook



www.coyoteacresranch.com



Zubot MANUFACTURING

We manufacture a complete line of sheep and goat equipment, such as:

- Tipping Tables
- Scales
- Bale Feeders
- Sorters
- Head Gates
- Creep Panels
- Trimming Stands
- Milking Stands
- Handling Systems
- Loading Chutes
- Shearing Chutes
- Lambing Panels
- Gates
- Fenceline Feeders
- Grain Self Feeders
- Kidding Panels



Z303-5D 5' Double Sided Feeder

- Holds approx 36 bushels
- Feed flow adjustable without wrenches
- Made of 14 ga material fully welded
- Easily moved on skids
- Creep panels may be attached

Our products are available directly from us at Zubot Manufacturing, through Peavey Mart, CCWG in Lethbridge AB, Keddie's Tack and Western Wear in Grande Prairie AB, the Sask Sheep Development Board, Saskatoon, SK and Central AB Ag Supplies from Stettler.

For Pricing and Information Contact:

Roger Bos **Jayden Hofstra**
 306-716-2404 306-292-7071
 email: zubotmfg@gmail.com
www.zubotwelding.ca

Spring is a key seasonal market for lamb due to an array of upcoming ethnic holidays where lamb is part of the preferred celebrative meal. Christian Easter and Jewish Passover provide good market opportunities, and both are in April this year. The Muslim holidays of Ramadan, Eid-al-Fitr, and Eid-ul-Adha are in February, March and May of 2026.

Global situation

As a result of the conflict in the Middle East, major sheep meat exporters like Australia and New Zealand are experiencing shipment issues. The United Arab Emirates was Australia's fourth largest export market in 2025 (35,493 tonnes). Saudi Arabia was also a significant market at 34,716 tonnes of sheep meat. Qatar, Kuwait, Oman and Jordan are also significant markets. The Middle East conflict could have significant impact on global markets depending on the length of the war.

Any prolonged closure of the Strait of Hormuz may necessitate a re-routing of shipments and potential redirecting of product to other markets in Asia, Europe and North America.

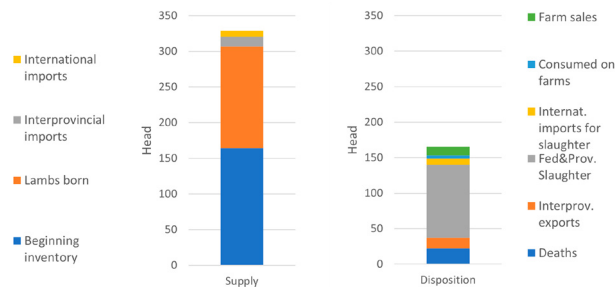
The changing policy and trade environment has been difficult to navigate. The recent U.S. Supreme Court ruling to strike down the use of International Emergency Economic Powers Act (IEEPA) to justify tariffs by the U.S. was soon replaced with alternative policies.

The Trump administration has moved to alternative legal justification for tariffs (Section 122 of the Trade Act of 1974). As Canada prepares for the review of the Canada-U.S.-Mexico trade agreement, uncertainty continues with respect to the food system's integrated future. Although Alberta does not export sheep to the U.S., Alberta producers are not immune to the market volatility this uncertainty creates.

The United States Department of Agriculture (USDA) January 1 sheep inventory report shows a slight decrease of 0.7 per cent in sheep and lamb inventory to 4,990,000 head from last year. Replacement lambs were reported to be 600,000 head, representing a 2.4 per cent decrease and ewe inventory declined by one per cent to 2,850,000 head.

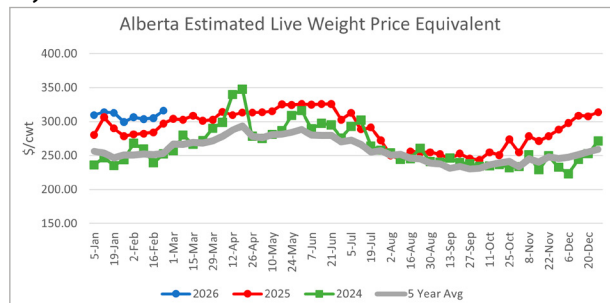
USDA also reported that lamb prices for the later half of 2026 are anticipated to increase to US\$235 and US\$240/cwt in the third and fourth quarter, respectively.

Alberta Supply and Disposition of Sheep, 2025

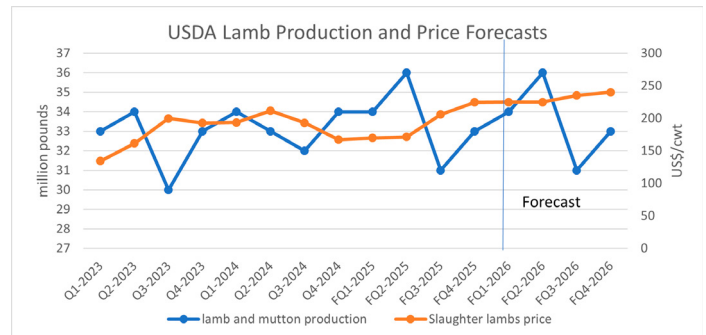


Prices

Alberta lamb prices ended 2025 on a high note and have continued to be strong into the first eight weeks of 2026. The average price of \$288.41 per hundredweight (cwt) for slaughter market lamb in 2025 was 9.5 per cent higher than in 2024. Average prices for January 2026 were 6.8 per cent higher than January 2025.



Source: Alberta Agriculture and Irrigation



Source: USDA, Economic Research Service



Conclusion

Growing lamb production involves expanding the ewe breeding herd base, maintaining high lambing rates, and reducing losses due to predators. Alberta producers have the technical and management expertise to increase production to capture a greater share of the market. In recent years, per capita lamb consumption has remained relatively stable, but Alberta's population has grown rapidly, lending greater support for the demand for quality lamb.

Producer Spotlight: Eagle Beef and Multi 4-H Club

In this edition, we're putting the spotlight on the Eagle Beef and Multi 4-H Club. This year, the club has 19 members enrolled in the sheep project, and they've been busy building their skills and knowledge across many areas of the sheep industry.

Always eager to learn, members spent time this year practicing how to assist with various lambing malpresentations using an imitation ewe. This hands-on activity helped members better understand lambing challenges and how to respond when assistance may be needed.

The club also explored the wool side of the industry, learning about different ways wool can be processed and used. Members had the opportunity to try loom weaving, felting, and carding, gaining a greater appreciation for wool and the many products that can be created from it.

Putting their new skills to work, members created handmade hot plates that were sold at the club's silent auction fundraiser.

Through activities like these, the Eagle Beef and Multi 4-H Club continues to give young members valuable hands-on experience while fostering a deeper understanding of the sheep industry.

Share Your Story with Us

Sheep producers learn a lot from each other - sometimes from the wins, and sometimes from the things that didn't go as planned. We invite you to share a success, a challenge,

or even an idea you've tried on your farm. We will even help you write the article! Reach out today at admin@ablamb.ca.



Young 4-H members learn hands on lambing skills in 4-H.

Farming the Sun Research Project

Solar energy projects are quickly expanding across Alberta, changing its agricultural landscape, and impacting farmers in different ways. Some farmers are installing solar panels on their land to offset their own energy costs, others are grazing livestock around solar sites, and many rural communities are seeing large-solar projects developed nearby.

Do you have experience with solar grazing or use on-farm solar energy to support your operations? Have you or your community been impacted by large-scale solar energy developments? If so, we would love to hear about your experience!

One approach that is receiving growing attention is agrivoltaics, or the combination of solar energy generation and agricultural production on the same land. While the concept promises more efficient land use, it is often implemented very differently depending on the landscape, type of farm, and local community needs and context. While understanding this diversity is important, relatively little research has focused on farmers' own experiences and perspectives. This project, led by Dr. Anna Bettini at the University of Calgary, explores people's experiences with the combination of solar energy and agricultural production in Alberta. We are interested in understanding questions such as:

BEAVER HILL AUCTION SERVICES LTD.

"The Market Dedicated to the Sheep & Goat Industry"

WESTERN CANADA'S LARGEST REGULAR SHEEP & GOAT SALE

SUPPORTED BY BUYERS FROM ACROSS CANADA AS WELL AS OUR LOCAL MEAT PACKERS & PRODUCERS

WEEKLY SALES	EVERY MONDAY (EXCEPT HOLIDAY MONDAYS) 11 AM
ONLINE SALES	BREEDING STOCK - DISPERSALS - RELATED EQUIPMENT SALES
CONTACT	<p>BEAVER HILL AUCTION SERVICES LTD. PO BOX 957 5008 - 46 AVENUE TOFIELD, AB T0B 4J0</p> <p>PHONE: 780-662-9384 EMAIL: info@beaverhillauctions.com</p> 
MARKET REPORTS SALE SCHEDULE MORE INFORMATION	www.beaverhillauctions.com

1. What do the diverse ways Albertan farmers are implementing on-farm solar energy look like?
2. What are the economic impacts of activities such as agrivoltaics and solar grazing?
3. How are rural communities responding to the quick expansion of solar energy developments in Alberta?

By gathering farmers' perspectives, this research aims to understand how solar energy development is shaping agricultural landscape and rural life, helping to inform more practical and equitable policies in Alberta.

If you choose to participate in the project, you will be invited for a short (1-hour) interview either online, by phone, or in person. We are also seeking volunteers for in-person farm visits this spring/summer. Please note, all personal information will be kept confidential, and participants may remain anonymous if they prefer.

If you are interested in participating or would like to learn more about the project, please contact Dr. Anna Bettini, anna.bettini@ucalgary.ca and research assistant Dana Frederick dana.frederick@ucalgary.ca. We look forward to hearing from you!

Lambing Time Reminders

As spring approaches, many producers are preparing for lambing to begin. Whether a seasoned producer or someone new

to the industry, we've compiled a few helpful reminders that might just help out during this busy time on the farm.

Colostrum Intake

Colostrum intake is essential for the health and well being of all lambs. Lambs are born with very few body reserves and need the high-energy colostrum soon after they are born. Colostrum contains antibodies to help protect the newborns from various diseases.

The timing of first colostrum is particularly important since the lambs' ability to absorb colostrum is substantially reduced six to eight hours after birth. The ability of the lamb to defend itself against infectious diseases is directly related to the amount, quality and timing of colostrum intake.

Ensure adequate colostrum consumption, either directly from the ewe or by bottle or tube feeding:

- 50ml per kg of bodyweight within two hours of birth
- 200ml per kg of bodyweight within the first 24 hours

Lambing

Assistance may be required for ewes experiencing a difficult birth. Knowing when and how to provide assistance during lambing is an important management skill. Signs that a ewe may require lambing assistance include:



RAPPA

IT'S TIME TO FENCE FASTER.

The Unique Rappa Winder Electric Fencing Machine



EASY TO FIT

Mounts onto your ATV/Side-by-Side - driven by the rear tire



AUTO FEED

Reels out and collects up to 4x lines of poly or steel wire in one go



LABOUR SAVING

Dramatically reduces your fencing time by up to 80%

"We were amazed at how effortless it was to pick up and put down fences without even breaking a sweat! Not to mention the time saved"
— Renton Agricultural Services.

Contact
J-Bar Farms Ltd:

☎ 403 635 0598
✉ jbarfarms2021@gmail.com
🌐 rappa-international.com

- the ewe has been straining for more than 30-40 minutes without progress
- the water bag is visible and no progress has been made after 30 minutes
- a limb or tail appears alone and no progress is being made after several minutes of straining
- the lamb appears to be stuck. There has been no progress for several minutes since the limbs have appeared
- the head of the fetus is visible with no limbs present
- if the ewe is weak or exhausted.

30-30-30 Rule

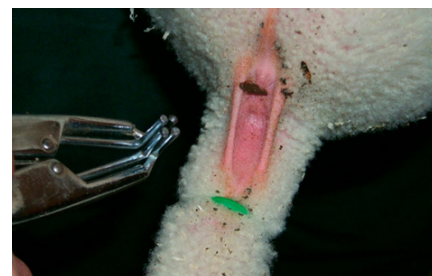
A good rule of thumb is to give the ewe 30 minutes to expel a lamb after pushing. 30 minutes after the first lamb, a second lamb should be delivered. Lambs should be trying to stand and suck 30 minutes after delivery.

Docking Tails

Tail docking in sheep is done for health and hygiene reasons. There are five main methods for tail docking: hot iron, rubber ring, rubber ring combined with clamp, crush and cut, and a surgical method. Tail docking for lambs over six weeks of age must be done by a licensed veterinarian with anesthesia and analgesia. If using rubber rings, the best window for applica-

tion is from 24 hours of age to 7 days old, and not older than 6 weeks of age.

Regardless of method, tails need to be docked at the distal end of the caudal fold. A good rule of thumb is to be sure the tail will cover the vulva and equivalent length on males.



Castration

Producers should consider carefully whether castration is necessary within any given flock. Castration is unlikely to be necessary where lambs will be finished and sent to slaughter before reaching puberty. The procedure should only be carried out where lambs are not likely to be slaughtered before puberty and where it is necessary to avoid welfare problems associated with intact males. If lambs are likely to be finished in a feedlot they should be castrated at a young age. All methods of castration at any age cause pain. Pain relief reduces the impact of castration on suffering and should be used whenever possible. Castration is recommended to be conducted by seven days of age when using a rubber ring.

Tagging Lambs

Right Ear – Right Tag

Canadian Sheep Identification Program (CSIP) tags are to be applied to an animal if it is leaving its farm of origin. CSIP tags can be purchased from the Canadian Cooperative Wool Growers. All approved CSIP tags for sheep are yellow.

SheepBytes: A Look Back and Where It Stands Today

SheepBytes has been a trusted nutrition tool in Canada's sheep industry since it launched in 2012, developed in response to rising feed costs and the need for a reliable, easy to use ration balancing program. Created through collaboration between Alberta Lamb Producers and Alberta Agriculture, the tool was designed to help producers build accurate rations, reduce feed waste, and support better flock performance.

Over the past decade, SheepBytes has grown into a widely used resource across operations of all sizes. Producers value its ability to balance rations for every stage of production, adjust for different feed types, flag nutritional gaps, and store multiple feeding programs. Many early adopters reported improved ration accuracy, cost savings, and more efficient winter feeding.

Today, SheepBytes continues to support the industry through subscription based access, a comprehensive feed library, technical guides, and ongoing updates that keep the program accu-



LETHBRIDGE, AB

100% Owned by Canadian Livestock Producers!


SHOP IN PERSON, ONLINE OR BY PHONE

At CCWG, we have everything you need for a smooth lambing season - from CISP tags to ensure safe and easy identification, to high-quality lambing supplies that make the process more efficient.



FIND US ON

 **FACEBOOK**

 **Instagram**

**145 Broxburn Boulevard
Lethbridge County,
Alberta, T1J 4P4
1-800-567-3693
lethbridge@ccwg.ca
www.CCWG.ca**

rate and practical. Its role has expanded alongside the sector's increasing focus on data driven flock management.

Looking ahead, SheepBytes remains an important tool for precision nutrition, especially as feed costs continue to influence profitability. A survey of current users was recently completed to help identify future needs and guide potential updates, ensuring the program continues to evolve with the industry.

A recent six month user shared this experience:

"We started feeding corn silage this fall and so far SheepBytes has made me much more comfortable knowing I am feeding a balanced ration and addressing multiple nutrient needs objectively vs. just assuming if the bunk is empty they are full. Lambing starts in two weeks and this batch of ewes has been fed entirely through breeding gestation using SheepBytes—exciting to see the results; subjectively they have some of the best body condition scores we've seen."

Log onto SheepBytes.ca to get started today!

Update on the Livestock Guardian Dog Project

Alberta Lamb Producers recently gathered producer and stakeholder feedback on a potential Livestock Guardian Dog (LGD) Rebate Pilot Project. After assessing producer survey responses and consulting with key stakeholders, the Board determined

that the rebate program did not have the level of support or alignment needed to move forward. While many producers expressed interest in predator-management tools, the survey results showed limited uptake potential for a rebate-based model at this time.

In response, ALP shifted its focus to two alternative approaches that were strongly supported during engagement: the development of an LGD learning module and a municipal engagement initiative aimed at improving awareness of guardian dog use across rural communities. Both concepts received positive feedback from producers and partners, highlighting a clear desire for practical education and broader understanding of LGDs as working animals.

Following a detailed review of costs, timelines, and organizational capacity, the Board ultimately decided not to proceed with the initiative. Budget constraints and the need to prioritize new strategic directions for the organization were key factors in this decision. While these projects will not advance at this time, the insights gathered through the process will help inform future discussions on predator-management support and producer education. ALP remains committed to advocating for tools and resources that strengthen flock protection and improve on-farm outcomes. As strategic priorities evolve, the Board will continue to evaluate opportunities that deliver the greatest value to Alberta's lamb sector.

Deworming to Reduce Economic Loss

Carcass condemnations due to *Cysticercus ovis* (*C. ovis*) are an increasing concern for many sheep producers. These condemnations result in significant economic losses at processing plants and are largely preventable through proper management of farm dogs.

Understanding *C. ovis*

C. ovis is the intermediate stage of the *Taenia ovis* tapeworm. Although the cysts are found in sheep, it is important to understand that this parasite is not a sheep tapeworm. It is actually a dog tapeworm that infects sheep as part of its life cycle. The adult *Taenia ovis* tapeworm lives in the intestine of dogs. Eggs are shed in the dog's feces and contaminate pasture. Sheep then ingest these eggs while grazing. Once inside the sheep, the parasite develops into cysts (*C. ovis*) in muscles. These cysts are discovered during meat inspection and lead to carcass trimming or condemnation.

There Is No Treatment for Infected Lambs

Once a lamb becomes infected with *C. ovis*, there is no treatment available. Deworming lambs will not remove the cysts or prevent condemnation at processing. Because of this, prevention is the only effective strategy, and that prevention starts with controlling the parasite in dogs.



OLDS AUCTION MART LTD.



4613 – 54th Street, Olds, AB. T4H 1E9
 PH: 1-877-556-3655 or 403-556-3655

**SELLING ALL CLASSES OF SHEEP & GOATS
 TUESDAY AT 12:00 PM (NOON)
 AT OLDS AUCTION MART.**

Competitive Commission Rates, No Yardage Charges.

**FOR MORE INFORMATION OR TO CONSIGN LIVESTOCK
 CONTACT: Al Breemersh 403-877-2031 or visit www.oldsauction.com**

The Impact on Sheep Producers

The economic consequences can be significant. At some processing facilities, up to 80% of carcass condemnations are due to *C. ovis*. Even when the entire carcass is not condemned, extensive trimming may be required, reducing carcass value.

Research has also shown clear links between farm management practices and the risk of condemnation:

- Farms that allow dogs to scavenge sheep carcasses have four times greater odds of *C. ovis* condemnation.
- Farms that do not properly dispose of deadstock - by burying, composting, or incinerating - have nearly 12 times higher odds of sheep carcass condemnation due to *C. ovis*.

These findings highlight how easily the parasite's life cycle can continue when dogs have access to infected tissues.

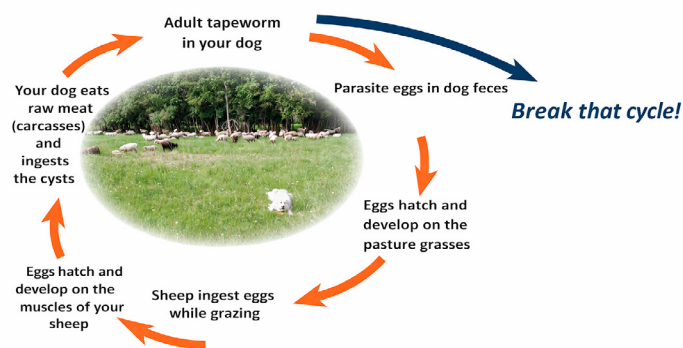
Breaking the Cycle

Preventing *C. ovis* requires interrupting the life cycle between sheep and dogs. Producers can greatly reduce risk by adopting a few key practices:

- 1. Deworm farm dogs regularly** - Routine deworming removes the adult tapeworm from dogs before they can shed eggs onto pasture.
- 2. Prevent scavenging** - Dogs should never be allowed to eat raw sheep meat or carcasses. This is the primary way dogs become infected.
- 3. Dispose of deadstock properly** - Dead sheep should be buried, composted, or incinerated so that dogs and wildlife cannot access them.
- 4. Maintain good hygiene around dogs** - Limit where dogs defecate when possible and reduce contamination of grazing areas.

Because the parasite depends on dogs to complete its life cycle, controlling infection in dogs protects the entire flock. Regular deworming of farm dogs, combined with proper carcass disposal and preventing scavenging, can dramatically reduce the risk of *C. ovis* in sheep.

By taking these steps, producers can help break the cycle, protect carcass quality, and reduce costly condemnations at the processing plant.



ALP Website Unveiling

Alberta Lamb Producers (ALP) is pleased to launch a newly re-designed website, bringing together information for both producers and consumers in one convenient place.

The previous website had served the organization well for more than 20 years, but it was due for a refresh. Over time, information had been spread across multiple platforms, requiring visitors to navigate between separate sites depending on whether they were looking for producer resources or consumer information. While both sites contained valuable content, directing people to two different locations was often cumbersome.



Albers Lamb Company



Buying:

Feeder Lambs, Fat Lambs, Cull Sheep

Contact: ROGER ALBERS

780 – 777 – 7416

alberslamb@hotmail.com

www.alberslambandgoat.ca

To improve the user experience, ALP undertook a project to combine all content under a single, modern website. The goal was to make information easier to find, simplify navigation, and provide a more streamlined online presence for the organization. One of the most important priorities during the redesign was preserving ALP's extensive library of producer resources. ALP is well known for the depth of information it provides to the sheep industry, including guides, fact sheets, management resources, and industry updates.

Maintaining this content and organizing it in a way that makes it easier to locate was a key focus throughout the project.

The new website offers improved navigation and a more user-friendly layout, allowing visitors to quickly find the information they need.

Whether looking for production resources, industry updates, or information about lamb for consumers, everything is now available in one centralized location.

The launch of the new website marks an important step in continuing to support Alberta's sheep producers while also helping connect consumers with information about lamb and the industry.

We are excited to offer improved features such as

- A searchable veterinary listing by geographical area. Vet clinics across the province were contacted to confirm their willingness to treat sheep and are included in this directory.
- An easy way to update producer contact information. Many rural addresses are changing so there is now an easy way to let us know of an email or address change to ensure continued ALP communications
- Better search functionality to find what you need

ALP encourages everyone to explore the new site and take advantage of the improved access to resources and information. Visit ablamb.ca today.



Summer/Fall 2026

Alberta

Details to Come!
Get your name on the list to be notified!

403-948-8533

admin@ablamb.ca



Masterfeeds
For farming life.

QUALITY PRODUCTS TO KEEP SHEEP HEALTHY AND PRODUCTIVE.

MILK REPLACERS
LAMB & SHEEP FEEDS
VITAMIN/MINERAL PREMIXES
SUPPLEMENTS

For special pricing call: Ian 403-350-0268 OR Doug 403-396-9081

SAVE THE DATE

AGM, CONFERENCE & FARM TOUR

Unlocking Profit Potential

NOVEMBER 6-7, 2026
NISKU, ALBERTA

Mark your calendar and stay tuned for registration details and the full agenda.

The Do More Agriculture Foundation

JOIN ALBERTA LAMB PRODUCERS ON FACEBOOK

CLICK HERE TO FOLLOW ALONG!

2026 CENSUS OF AGRICULTURE

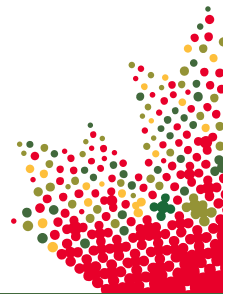
Your Farm. Your Census. Our Future.

The 2026 Census of Agriculture is coming.

In **May 2026**, farm operators will receive an invitation letter with instructions for completing their 2026 Census of Agriculture questionnaire online.

Census of Agriculture data provide:

- farm operators and industry organizations with crucial information for informed business decision-making;
- all levels of government with high-quality information that they need to develop and implement policies and programs; and
- the agriculture sector, all levels of government and the Canadian public with an accurate statistical portrait of the state of agriculture in Canada.



Your response matters. This May, please complete your Census of Agriculture questionnaire to support your sector and Canadians everywhere.

To learn more about the Census of Agriculture, visit statcan.gc.ca/en/census-agriculture.

CLASSIFIEDS

Selling or buying Purebred Registered Sheep?

The Canadian Sheep Breeders' Association (CSBA) is dedicated to representing the Purebred Sheep Breeders across Canada. Purebred Registered Sheep signifies they have been registered with the Canadian Livestock Records Corporation (CLRC) and a certificate of registration will be provided with the sale of the animal.

These records can be found online at www.clrc.ca and is the responsibility of the seller to pay for and initiate the transfer of the registration to the buyer. These records will indicate the pedigree information and ownership status. We encourage you to confirm the animals you are interested in, are in fact purebred registered animals.

Under the Animal Pedigree Act, it is an offense to offer to sell, contract to sell or sell, as a purebred, any animal that is not registered or eligible to be registered as a purebred by the association authorized to register animals of that breed or by the Corporation.

If you are interested in purchasing any animals or are new to the industry, don't hesitate to reach out to any of the CSBA Board of Directors. CSBA is an organization of over 1100 breeders of purebred sheep across Canada, representing over 40 breeds of sheep.

www.sheepbreeders.ca

Classified ads are available free to Alberta producers. In addition to being published in the newsletter, they are available on-line under News and Advertising at <http://www.ablamb.ca/index.php/news-advertising/advertising>.

Email info@ablamb.ca or call 403-948-8533 to place, amend or delete your classified ad. Alberta Lamb Producers does not endorse or promote any of the advertisements or advertisers in the Newsletter.

4-H LAMBS

Contact one of your ALP Directors if you have lambs suitable for 4-H projects or are looking for 4-H lambs.

SHEEP & LAMBS - For Sale

Registered Gotland sheep for sale (proven 3yr old ram, 1-2yr old ewes, spring lambs). Hardy, beautiful fleeces and personalities. Located near Okotoks.

Contact Carissa 403-629-9394

Grass fed butcher lambs available February 2026. Contact Terra Weaver at r.weaver@mcsnet.ca or 780-808-1397

Dry Lake Ranch AB Ltd., Rod & Bernadette Nikkel, Registered Canadian Arcott breeding stock available. Please contact robenikkel@gmail.com, 780-674-6805 or call 780-284-9805

Polled and Horned Dorset breeding stock available. coyoteacresranch.com. Contact coyoteacres@gmail.com or call 780-614-0569

Shropshire breeding stock available. www.coyoteacresranch.com. Contact coyoteacres@gmail.com or call 780-614-0569

Sheep Trax Canadian Arcotts available. coyoteacresranch.com. Contact sheepncats66@hotmail.com or call 403-741-8597

Proven genetics from well bred and well muscled Suffolk and Dorset offspring! Yearling rams and ram lambs available. Please call or text Tom @ 780-978-4705

Rideau Arcott ewe lambs and yearling ewes for sale. Commercial breeding stock, non-registered, available from a closed flock. Frisco Farms, Siemen & Terah Vandermeer. Located in Rocky Mountain House, AB. Contact terahvdmeer@gmail.com or call 403-418-6441

Sheep and Lambs for sale, Sky Blue Farm - Contact Donald Johnston. Registered Canadian Arcott yearling and lamb rams and yearling and ewe lambs available. Delivery available. Donnelly, AB. Call 780-837-1770 or donaldallan1770@gmail.com

Canadian Rideau Arcott Ile de France cross ewe lambs for sale. Age is 8-12 months. Contact Paul at 403-332-2267

Purebred Suffolk Breeding Rams – non-registered. Born Feb '25. Great sires for weight gain and fast growth. From twins or triplets and fully vaccinated and dewormed. Email wrierenga@hotmail.com or call or text 780-674-4760

Purebred Charollais Yearling rams for sale. Well-muscled, long bodied rams with excellent ADG for superior butcher quality lambs and great easy lambing replacement ewes. fieldstone@telus.net. 780-499-0066

Isle of Skye Cheviots: Registered North Country Cheviot Ram Lambs and Ewe Lambs available. Our NCC's make an excellent choice for breeding your ewe lambs.

Easy lambing, hardy and thrifty. Contact Susan at isleofskyecheviots.ca or facebook.com/isleofskyecheviots

or call 403-588-3808

Purebred Suffolk yearling & lamb rams for sale. Yearlings have been semen & vet checked. Long, deep bodied, well-muscled rams. Charles Iwan, Taber 403-331-7984 or charles.iwan@live.com

Purebred Canadian Arcott registered Rams for sale. If you want to improve your genetics – here is your chance! Ready to breed in the fall. Purebred ewe lambs are also available. Email sheep@veterancolony.com or call 403-575-7794

Sheep Lake Suffolks - Registered Suffolk ram lambs & ewe lambs for sale. Contact Mike 780-307-3385 and follow Sheep Lake Suffolks on Facebook

Parker Stock Farm. Glen and Kathy Parker. GenOvis performance tested Suffolk breeding stock. parkerstockfarm.com, parkerstockfarm1@gmail.com or call 403-443-7220

Alberta Sheep Breeders' Association (ASBA) members are your source for registered breeding stock in Alberta. Join today! Visit albertasheepbreeders.ca or call 1-866-967-4337

SHEEP & LAMBS - Wanted

Wanted: Feeder or fat lambs, cull sheep and all classes of goats in Acme or Stony Plain, AB. Call Roger Albers 780-777-7416 or alberslamb@hotmail.com

WANTED: Feeder lambs in Provost, Alberta. We pay a premium for Preconditioned Lambs. Please contact us for details. Rick Cromarty, SOUTH CARA FARMS LTD. 780-753-1276 or SCFLSHEEP@mcsnet.ca

DOGS

Inukshuk Professional Dog Food: a high energy dog food for your hard-working livestock guardian dog. For details and pricing, please contact Karl: at lonevalleyfarmltd@gmail.com or 403-971-3426

Purebred Kangal pups, Veteran, AB. Contact 403-575-7794 or sheep@veterancolony.com

Maremma guard dogs. Various ages. Raised on-farm and on-pasture with sheep. Outstanding, good-natured parents. Very reliable. The coyotes are the ones with the problems! Located near Carstairs, AB. Contact Richmond at 403-586-5638

MISCELLANEOUS (EQUIPMENT, EMPLOYMENT, SERVICES, ETC.)

Integrity Ranch is proud to offer the following services to the lamb industry: Forage and cover crop seed for lamb finishing and ewe wintering; 24' freestanding feed bunks, reduce waste, keep lambs in; full line of nutrition products and consulting specifically designed for sheep and goats; buyer of lambs and ewes. Please contact John 403-857-9236 or kelsey@integrityranching.com for more details. integrityranching.com

Looking for a way to improve efficiency in your sheep operation? Advantage Feeders allows you to control feed grain to your livestock without waste, efficiently feeds the rumen with the little bit and often feeding, while saving time and energy. Check out the energy efficient Jug Waterers, gates, economy panels, Ritchie Combi Clamp sheep handling system and more, on our website. Visit Huber Ag Equipment at huberequipment.com or call 1-844-482-3724 (1-844-HuberAG)

Looking for a new mineral/mixed vitamin infused molasses that you can use for a feed supplement or to help make poor feed better for the sheep? Contact Rod English 780-307-2531 for more information or to place your order!

Looking for an experienced 4-H Sheep judge? Clinics on showmanship, fitting and judging? Niki Schieck travels throughout the province. Years of experience, hands-on approach, works with groups of any size, age and experience. Will host clinics at her farm, speak or hold sheep 101 clinics for new producers. Contact 780-993-2037 or nmrs.business@gmail.com

Custom Woolen Mills would like to buy your coloured wool (black, greys or multi-coloured sheep). We cannot accept hair, kemp, extreme chaff or paint in the fleeces. For further details, contact Custom Woolen Mills Ltd. Carstairs, customwoolenmills.com or 403-337-2221

John Beasley Professional Shearing Services. Available anywhere in western Canada. All flock sizes. Specializing in low stress, kind and efficient handling of ewes. Early booking and volume discounts. Contact John Beasley at 403-857-9236 or kelsey@integrityranching.com

Double E Shearing Professional Sheep Shearers offering services across Manitoba, Saskatchewan and Alberta. Taking bookings for 2025 now. Experienced internationally both commercially and in competitions. We are the crew to get your flock done regardless of size with no hassle. Call Russell 1-306-620-3083 or 2esheepshearing@gmail.com

Custom Lamb Grazing Spots Available! Daily paddock moves, fresh forage, and top-notch care to keep your lambs growing strong all season. Minerals supplied, clean water set up, and 3 loyal guardian livestock dogs on duty 24/7. Secure 4-ft field-fence perimeter, with paddocks divided by 6-strand electric wire for safe, controlled grazing. Enjoy up to a 110-day grazing season (weather dependent) with excellent pasture gains. Optional grain finishing may be available at the end of the season. Give your lambs the pasture advantage for optimal gains—book your grazing season today! Clover Cottage Farms, Sangudo, Iddon & Crystal Jeffreys, 780-305-1302 or Clovercottagefarm2017@gmail.com



Finance your ewes at Alberta Lamb Producers with Scotiabank Yield More Financing™

Contact Jolene Airth at ALP info@ablamb.ca or Scotiabank Yield More Finance yieldmorefinancing@scotiabank.com

Visit ablamb.ca for more details.



Sheep Bytes.ca

Ration Balancer

SHEEP VETERINARY LISTING



TO VIEW AVAILABLE RESOURCES VISIT OUR WEBSITE ABLAMB.CA

VISIT WEBSITE NOW



PUBLICATION SCHEDULE 2026



ADVERTISEMENTS OR ARTICLES RECEIVED LATER THAN THE SUBMISSION DEADLINE WILL NOT BE INCLUDED

ISSUE	DEADLINE
JANUARY	THURSDAY, DECEMBER 4 2026 ✓
APRIL	THURSDAY, MARCH 12, 2026 ✓
JULY	THURSDAY, JUNE 11, 2026
OCTOBER	THURSDAY, SEPTEMBER 10 2026

JANICE ECKSTRAND - ADVERTISEMENT COORDINATOR
403-993-5245 | ADS@ABLAMB.CA

Sheep Calendar

What	Where	When & How
Calgary Aggie Days	April 15-17	https://ag.calgarystampede.com/events/year-round-events/aggie-days
Shearing Clinic	July TBD	Details coming soon, www.ablamb.ca
Provincial 4-H Sheep Show	July 2-4	Home - 4-H Alberta
Summer Synergy Sheep Show	July 6-9	https://oldsregionalexhibition.com/events/summer-synergy/
Lloyd Ex Fair 2026 - Sheep Show	July 8-11	https://www.lloydex.com/lloydex-fair
2026 All Canada Classic Sheep Show	July 8-11	https://sheepbreeders.ca/2026-all-canada-classic
Grasslands Sheep Exhibition	July 18-19	https://sksheep.com/events/grasslands-sheep-exhibition/
Vermilion Fair Sheep Show	July 23-25	https://www.vermilionag.ca/
Open Farm Days	August 15-16	https://albertaopenfarmdays.ca/

Please e-mail info@ablamb.ca or call 403-948-8533 to provide details of your event for the N'ewesletter

ALP BOARD OF DIRECTORS 2026

Director	Phone	Email	Location
Martin Winchell, Board Chair	403-845-2577	chair@ablamb.ca	Clearwater County
Adam French, Vice Chair	780-872-9908	adam@ablamb.ca	Vermillion River County
Darlene Hawco, Finance Chair	780-292-4607	darleneh@ablamb.ca	St. Paul County
Edward Machuk, Vice Finance Chair	780-514-9344	edward@ablamb.ca	Parkland County
Richard Van Driesten, Director	403-715-9324	richardvd@ablamb.ca	Vulcan County
Alison Neale, Director	306-914-1362	alison@ablamb.ca	Mountain View County
Cody Legault, Director	403-485-0686	cody@ablamb.ca	Vulcan County
Esther Hoogland, Director in Training	780-387-1781	esther@ablamb.ca	Wetaskiwin County

ALP Office - Executive Director, Jolene Airth 403-948-8533 info@ablamb.ca

Address: Agriculture Centre, 97 East Lake Ramp NE, Airdrie, AB T4A 0C3

Website: <https://ablamb.ca>

Meet the NEW FarmWorks... MyFarmWorks

Brought to you by

Shearwell
Data

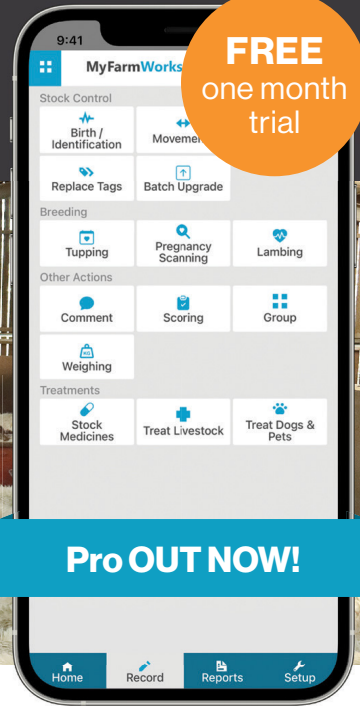
Livestock Systems

FREE
one month
trial

MyFarmWorks is cloud based
and fully mobile on iPhone,
Android, Windows and Mac

**Existing FarmWorks user?
Transfer your data to MyFarmWorks!**

To find out more, please contact support; call
780-674-9564 or email sales@eronafarms.ca



Your **data syncs**
automatically
between devices

Record and manage births,
deaths, movements, weights,
treatments and tag changes

Multiple users and
unlimited stock
numbers

Use on your **phone,**
laptop, X6 stock
recorder, or all three!



Start your **FREE** one month trial today! Find out more: www.myfarm.works | 780-674-9564 | hello@myfarm.works



More than just milk replacer.

Why choose Grober for your lambs? Our special blend of
unique and exclusive ingredients:

DOSTO®
Oregano for improved
digestion, reduced bloat,
improved growth and
reduced treatment needs.

GroMega®
Protein Encapsulated Fat (PEF) for
improved mixability and digestion,
with Tributyrates for gut development
and increased feed efficiency.

Interested in even more health benefits?

Check out LambGro KidGro® Colostrum, and raise your
lambs Right From The Start™.

®/™ LambGro KidGro, GroMega are registered trademarks and Right from the Start is a
trademark of Grober Nutrition. Dosto is a registered trademark of DOSTOFARM GmbH
(Germany). All other products listed are trademarks of their respective companies.

RIGHT FROM THE START™

Contact us today to learn more:

www.grobern nutrition.com

[f](https://www.facebook.com/grobern nutrition) [@grobern nutrition](https://www.instagram.com/grobern nutrition)

[1-800-265-7863](tel:1-800-265-7863)

Celebrating Our 20th Anniversary

POUND MAKER RAM SALE



Thursday, May 21, 2026

11:00 am @ Fort Macleod Auction Market
Fort Macleod, Alberta

2 Ewe Lambs donated by
Keho Lake Colony
will be auctioned off.
All proceeds will be donated to

STARS[®]

Consignors:

Warren and Norine Moore
Bert and Andrelei Grisnich
Ty and Drew Mandel
Mark, Louis and Jody Greidanus

Trade Booths:

Zubot Welding
Shearwell Canada
Alberta Lamb Producers
Alberta Sheep Breeders
Association



SUFFOLK



RIDEAU ARCOTT



RAMBOUILLET



HAMPSHIRE



ILE DE FRANCE

Selling 155 Yearling Rams

Look for the catalogue on the website after May 1st!



CANADIAN ARCOTT



DORSET



NORTH COUNTRY CHEVIOT



COLOURED



CHAROLLAIS

Auction barn will be open to view the rams from 1pm to 7pm on Wednesday, May 20, 2026.

Unable to attend? We offer the following options:

Internet Bidding Available

DLMS
www.dlms.ca

For more information call DLMS:
Mark Shologan 780.699.5082 or
DLMS Purebred Team 780.991.3025

OR

Contact one of our order buyers:

Warren Moore 403-625-6519
Louis Greidanus 403-894-2593

Check out the sale website: www.poundmakerrams.com, follow us on Facebook,
or contact Warren Moore at 403-625-6519 or Louis Greidanus at 403-894-2593